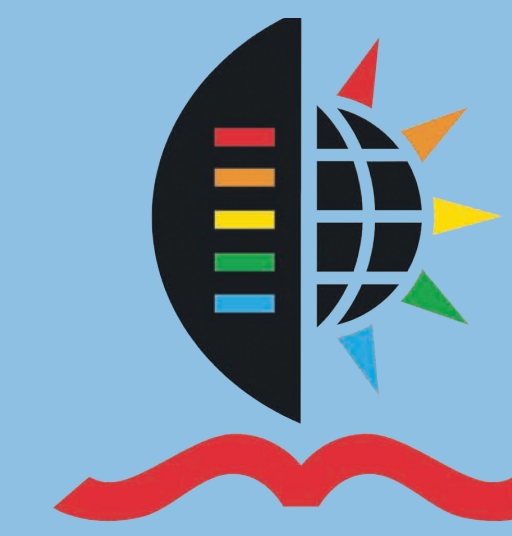


PROPERTIES OF FAECAL SLUDGE

Urine diversion (UD) and Ventilated improved pit latrines (VIP)



UNIVERSITY OF
KWAZULU-NATAL



Summary

Faecal sludge characteristics vary between different locations and types of facilities. Investigation will support the design of toilet facilities, mechanical pit-emptying devices and sludge processing technologies.

Objectives

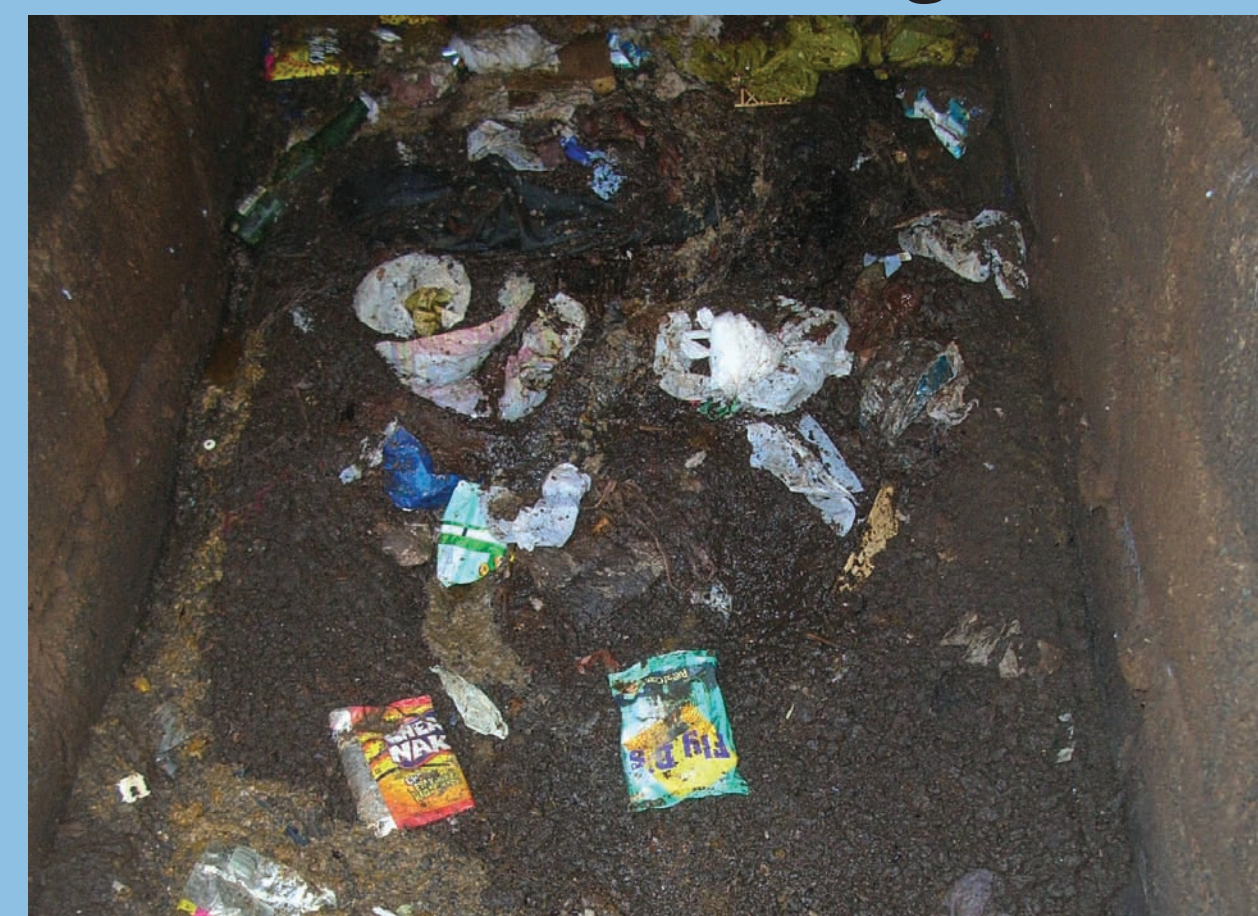
Generate data on faecal sludges from on-site sanitation facilities
Correlation between facility usage, sludge quantity and quality



UD standing



UD active vault



VIP dry

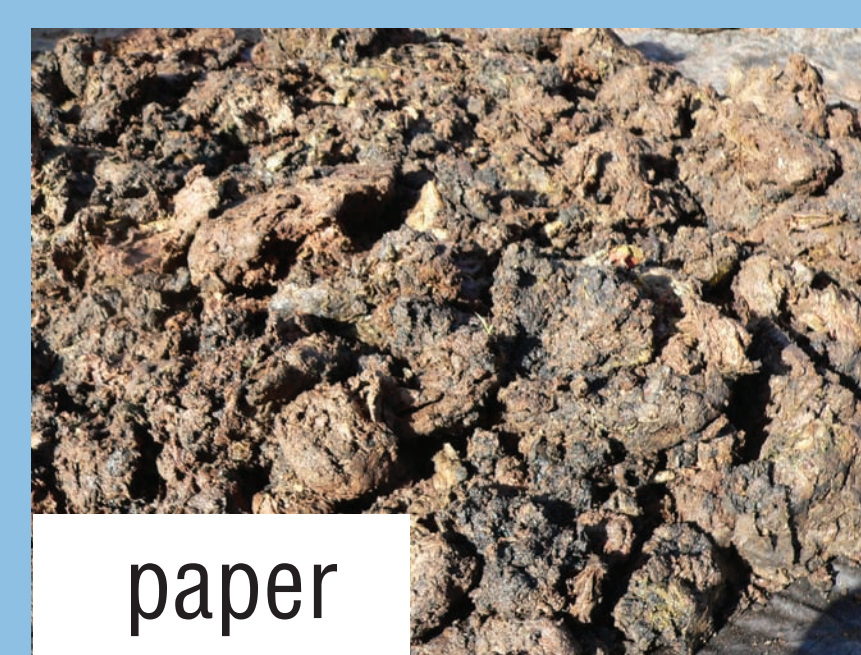


VIP wet

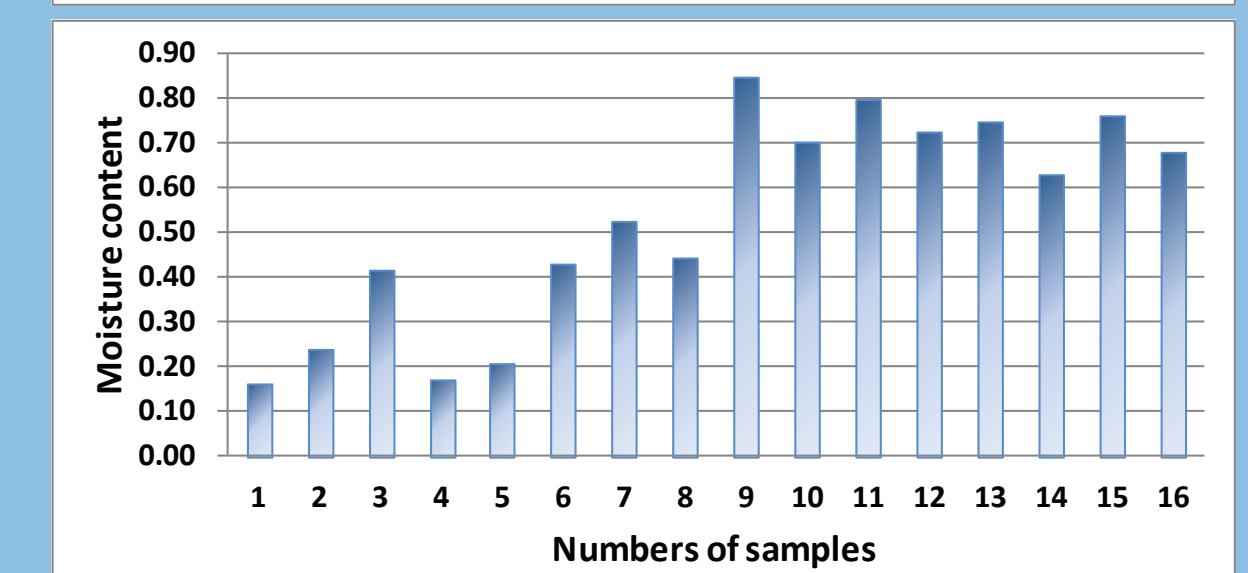
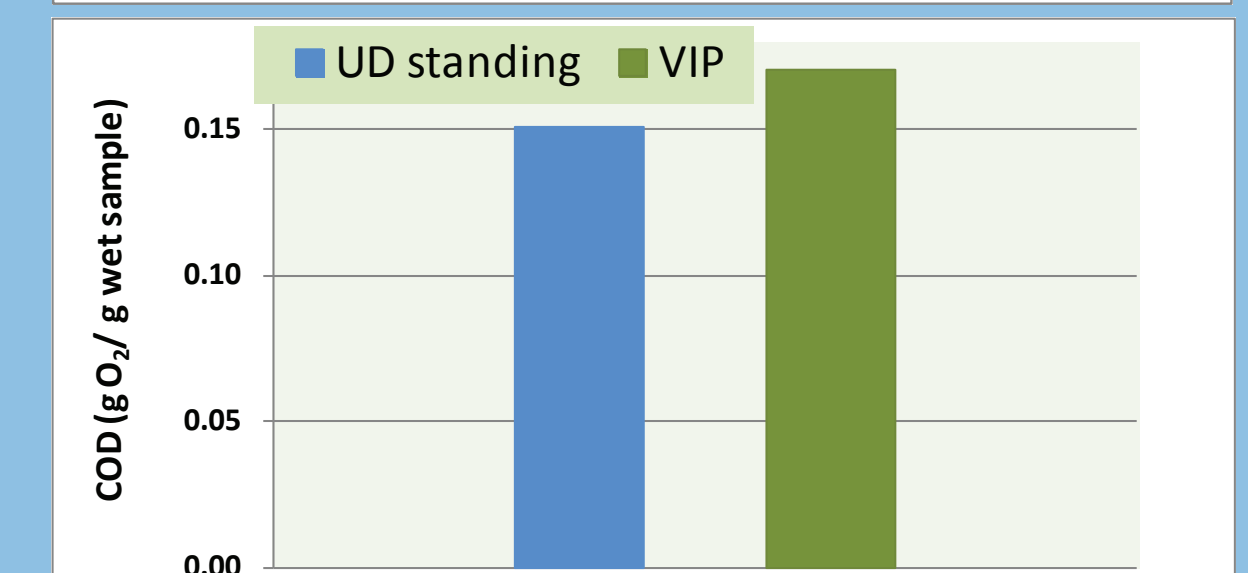
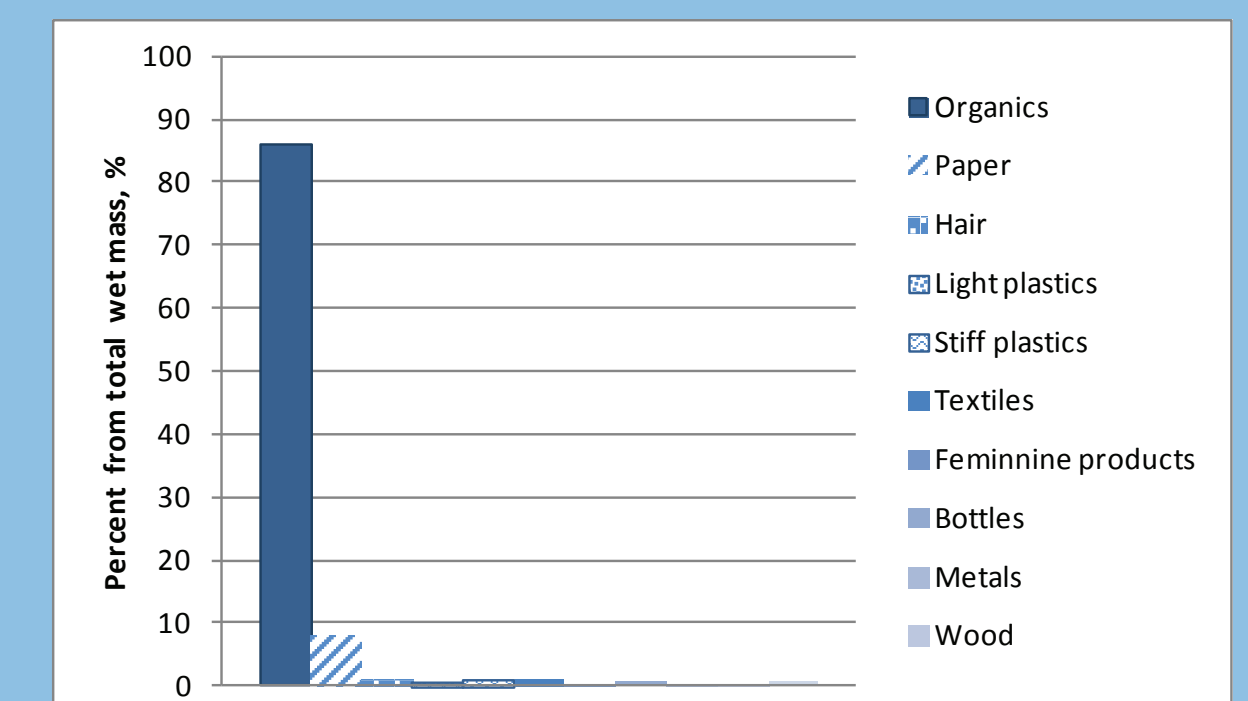
Pit emptying

Wet household VIP
Dry household VIP
Household UD
Household unimproved pit
Community ablution block VIP
School VIP

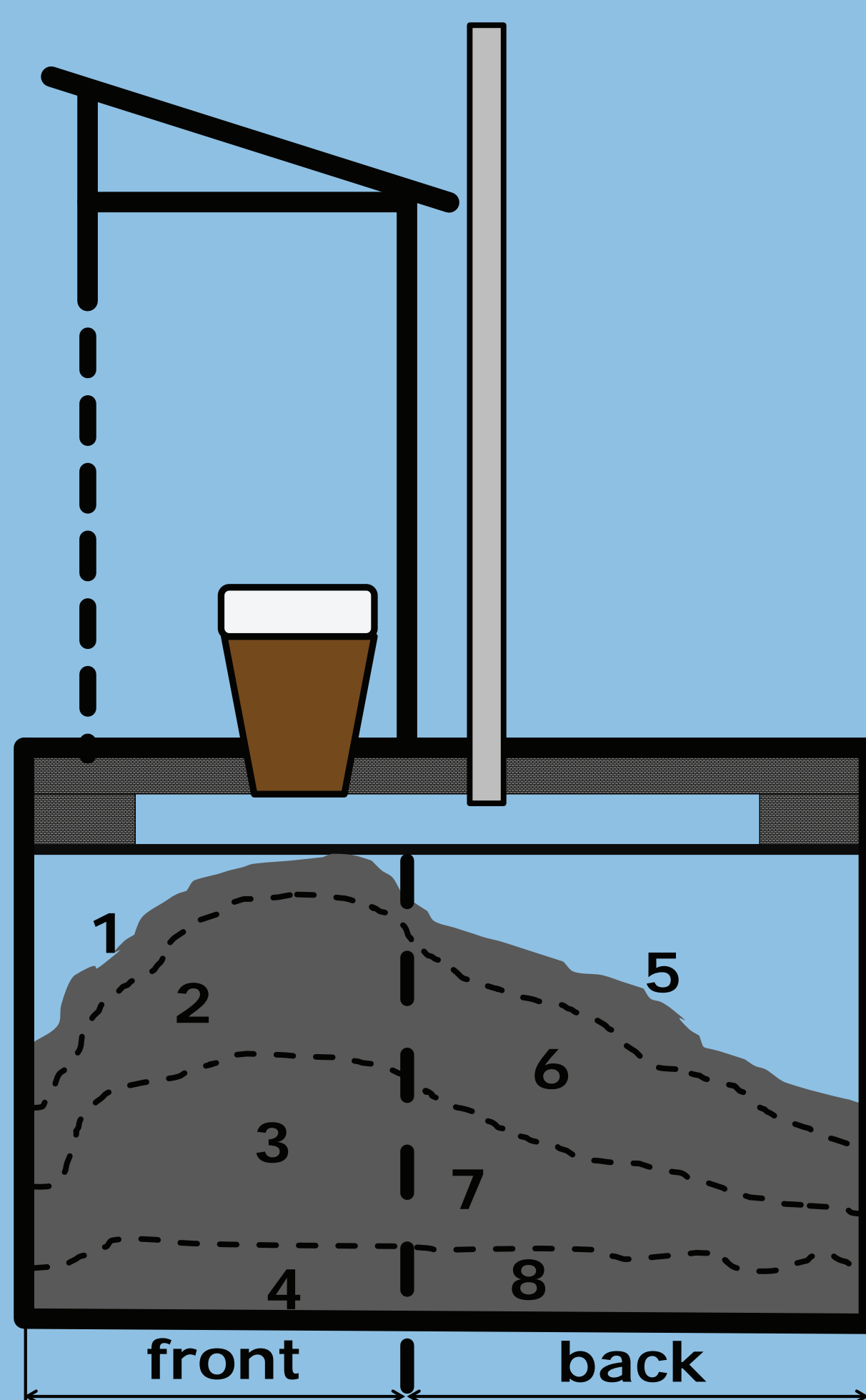
Sludge sorting



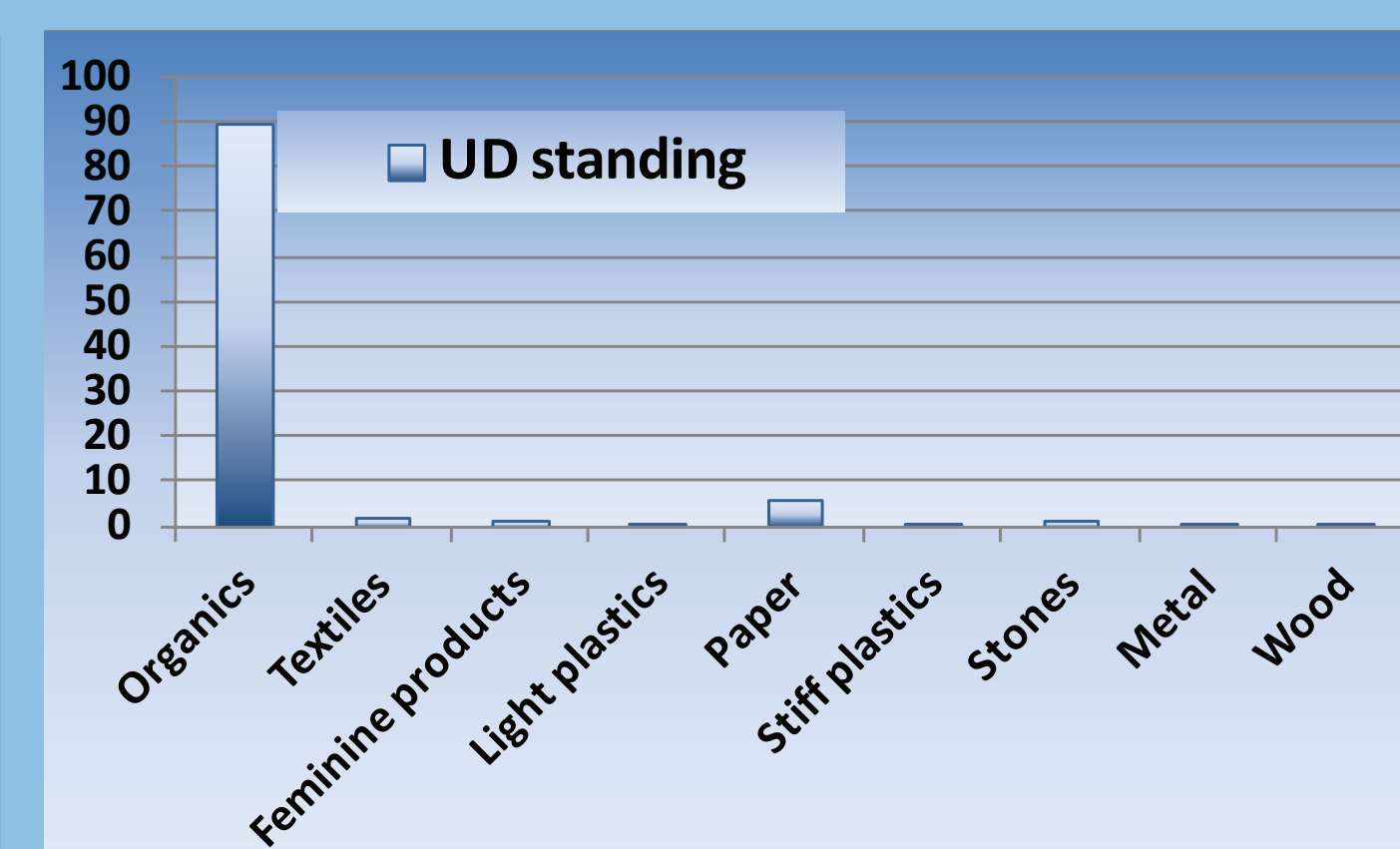
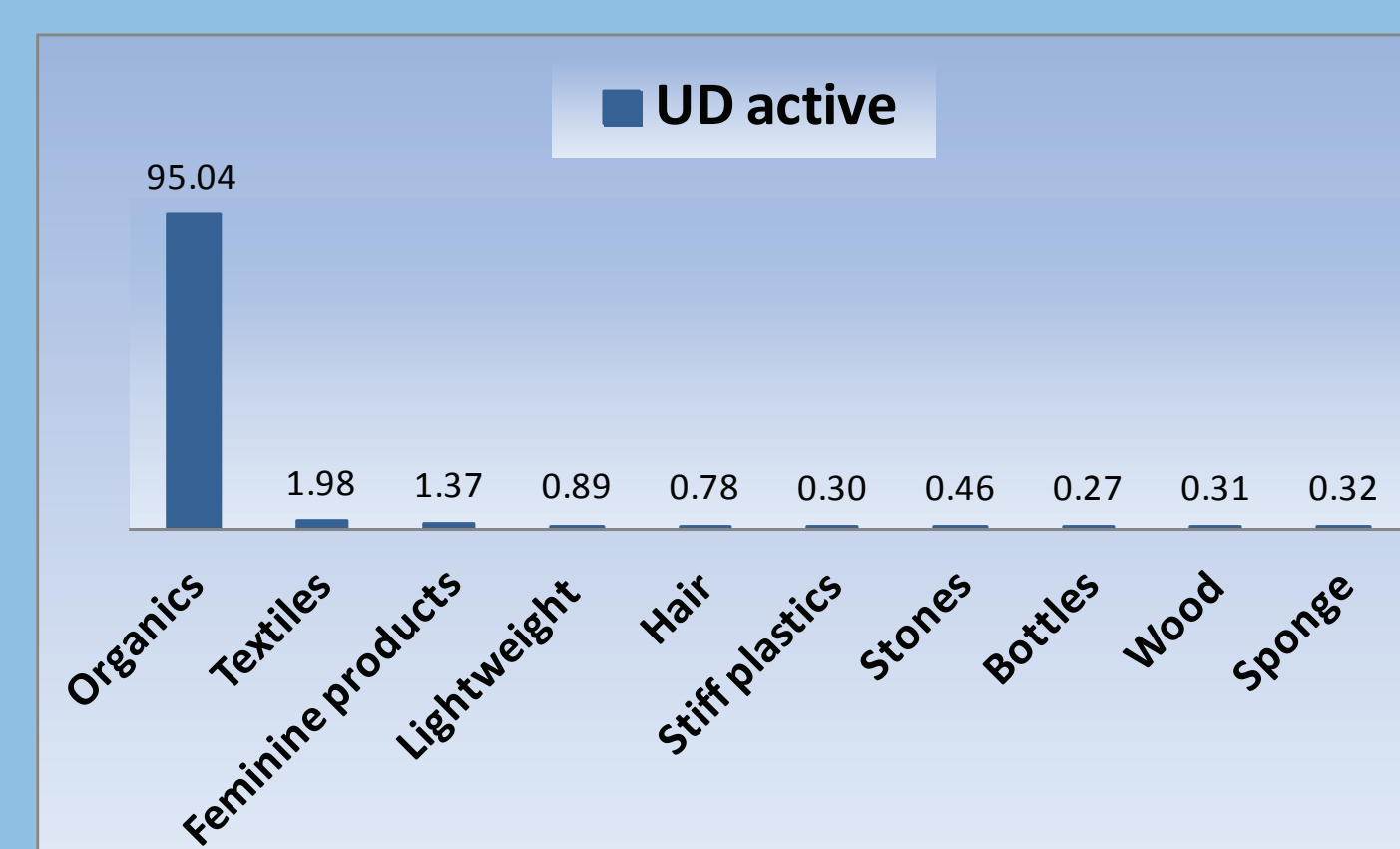
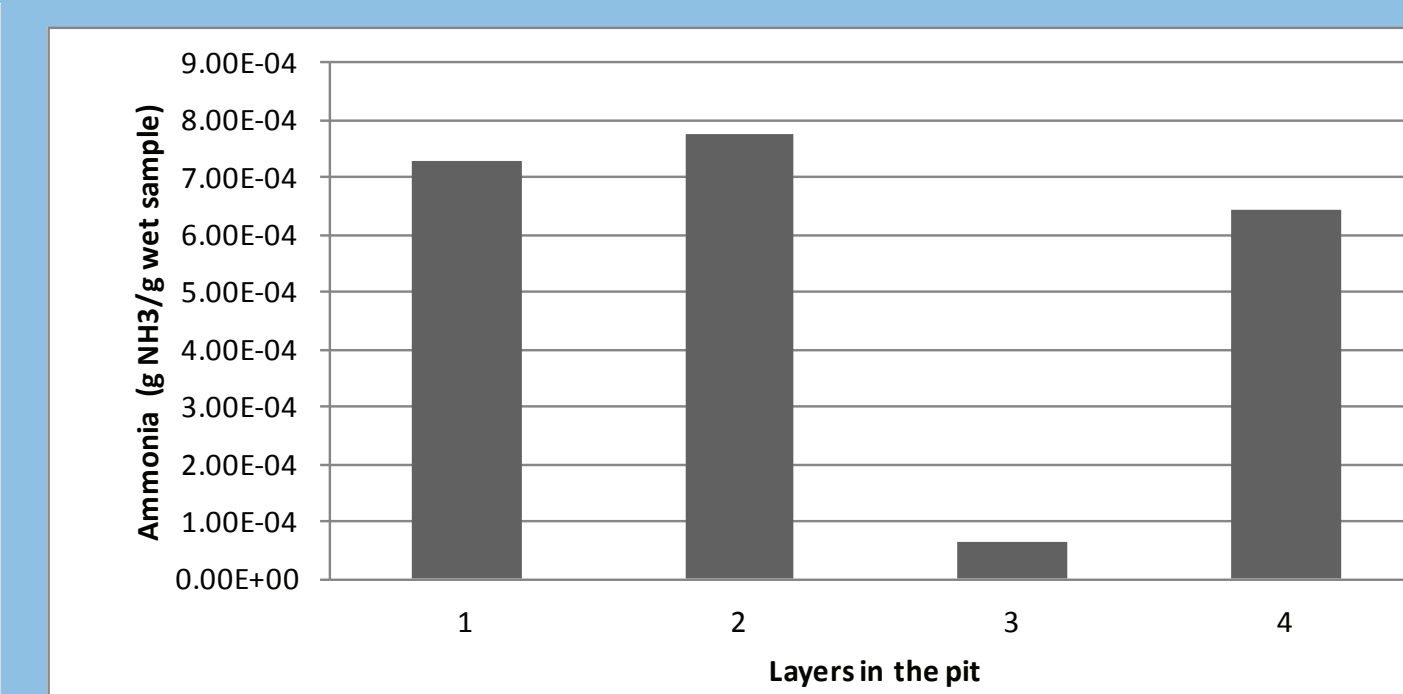
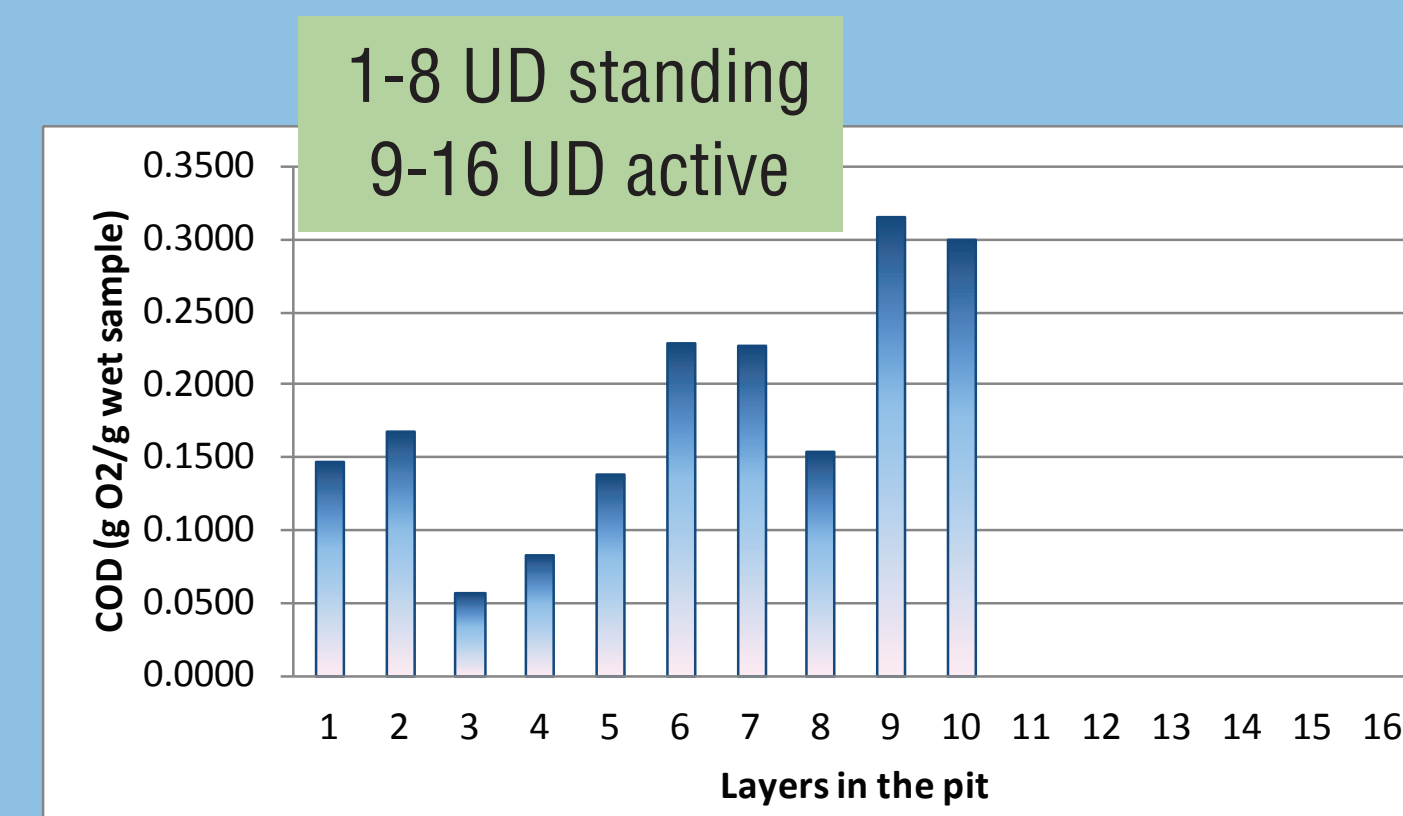
Material distribution as % of total wet mass:



Sample selection



Preliminary analyses



Further analyses

Rheology
Thermal
Density
Permeability
Sludge volume

3D scanner:



Project team

Tina Velkushanova – Project leader
Velkushanova@ukzn.ac.za
Lungi Zuma – MScEng Research student 212561083@stu.ukzn.ac.za
Patrick Adadzi and Chika Nwaneri – laboratory/field research assistants
Fukamela Building and Maintenance – pit emptying contractor
Chris Buckley – PI
buckley@ukzn.ac.za

