



PROJECT SAMMAAN

Communal Sanitation For Urban Slums In India
(www.projectsammaan.com)

All rights are reserved by Quicksand, and content contained in these slides may not be reproduced, downloaded, disseminated, published, or transferred in any form or by any means, except with the prior written permission of Quicksand.



The Potty Project

(www.pottyproject.in)

User-centered understanding of urban slum sanitation in India



Sammaan: Dignity & Respect

An urban sanitation infrastructure project designed with rigorous impact evaluation in mind

Project Sammaan is an urban infrastructure project that seeks to design & build improved sanitation facilities in the cities of Bhubaneswar & Cuttack

119 toilet facilities (87 community sanitation facilities & 27 public sanitation facilities) will be built in Bhubaneswar & Cuttack between 2012-2014

60,000 + people in Bhubaneswar & Cuttack are expected to directly benefit from this

Scale up through a toolkit that helps urban local bodies replicate the design & process

Timescale for design, implementation & testing: Jan 2012 - Dec 2015

Planned Improvements

These upgrades will comprise of 5 different types of improvements, three of them at toilet facilities and one of them, a capacity building intervention at BMC, and demand generation in communities.

Capacity Building

- Program Management Office designed and deployed at Bhubaneswar Municipal Corporation to enable rollout and management of sanitation services in Bhubaneswar.

Demand Generation

- Sanitation demand generation activities executed with the help of community NGO at slum locations within Bhubaneswar

Experimental Layer

- Additional utilities such as bathing areas, areas for washing clothes, facilities to manage menstrual waste

- Two different types of toilet management systems: private contractor management or community management
- Household level payment systems that enable higher levels of adoption

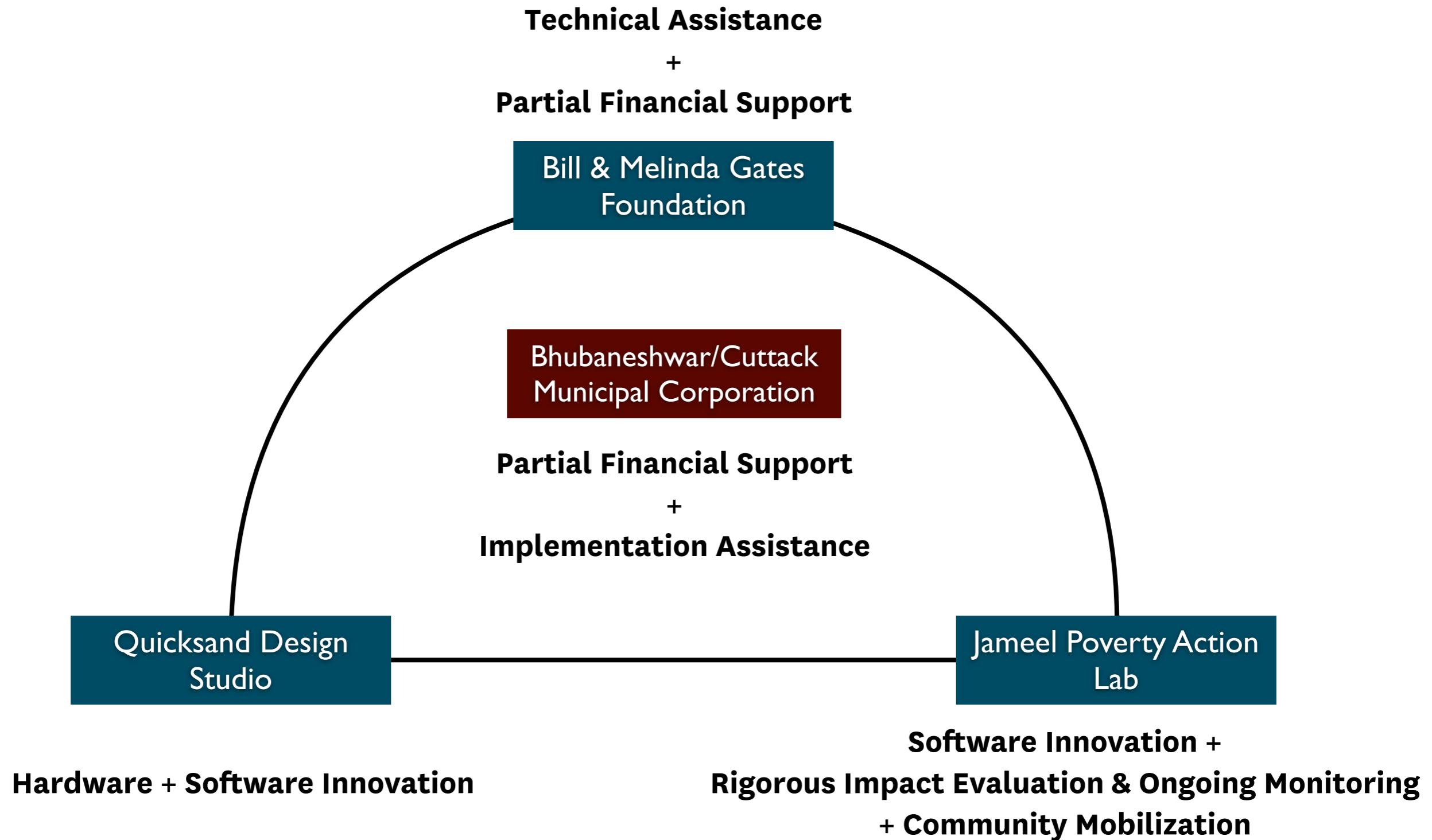
Base Layer

- Sufficient number of toilet seats designed for universal access
- Washbasins
- Water Supply
- Professional Branding Of Toilet Facilities + Caretaker
- Aesthetics: art, landscaping
- Functional: Natural lighting + ventilation
- A professional branding system at the facility + community level

Hardware

Software

C Project Consortium & Roles



Total Project CAPEX: INR 30 crores (approx USD 6mn)

Government Contribution: INR 23 crores (approx USD 4.6mn)

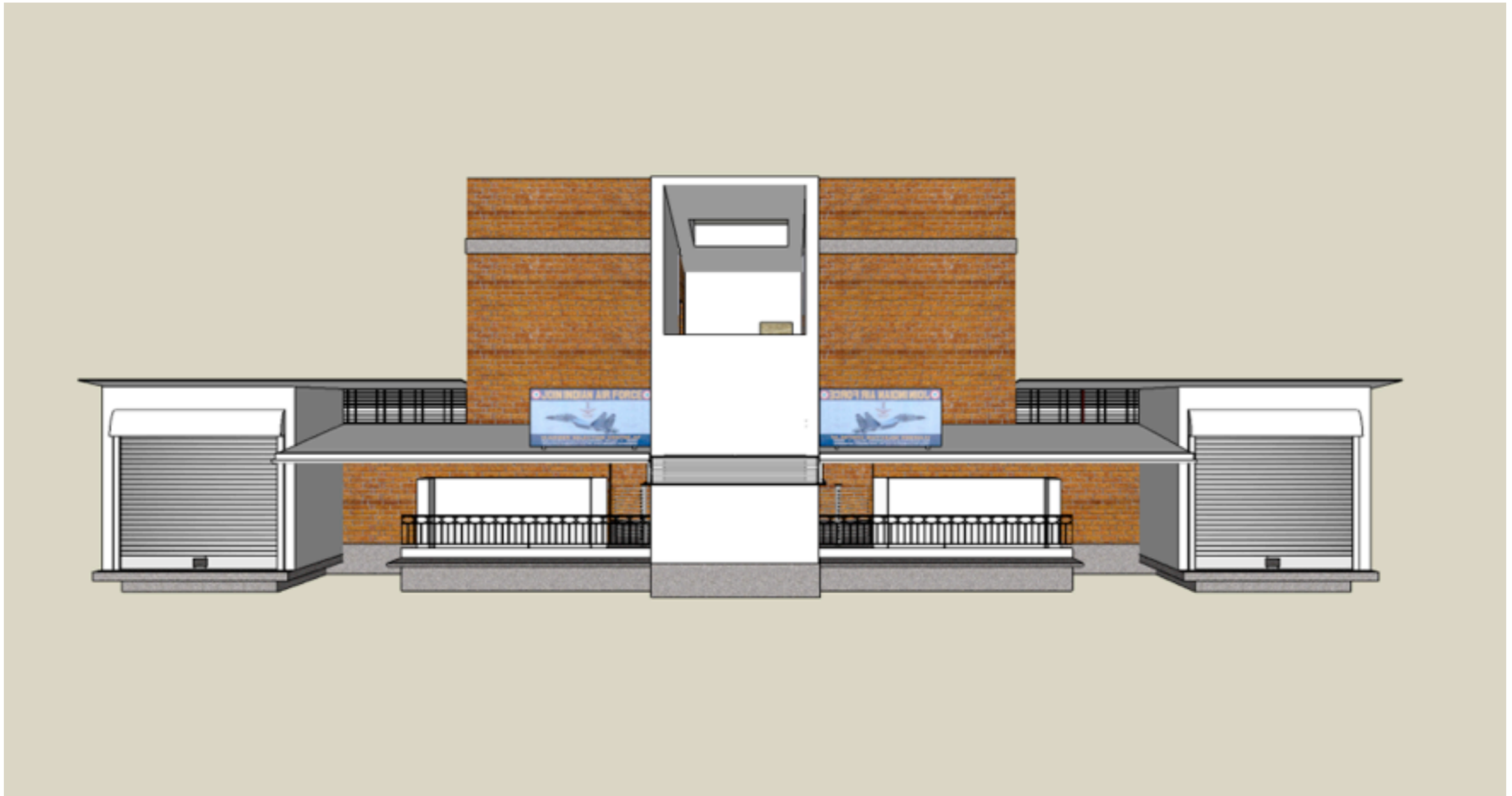
BMGF Grant: INR 7 crores (approx USD 1.4mn)

Typical CAPEX 12 seater Community Toilet (Enhanced Layer): INR 58 lakh (approx USD 116K)

- › Men and women section
- › 6 toilet stalls each
- › 6 bathing stalls each
- › Universal access stall
- › Child potty seats each side
- › Hand & foot washing basins
- › Spitting trough
- › Menstrual waste incineration
- › Clothes washing area
- › Caretaker quarters
- › Retail shops
- › Full scale DEWATS sewage treatment system

* Conversion rate used 1 USD = 50 INR

Some Interim Designs



Some Interim Designs



- › Driving innovations within stringent cost benchmarks
- › Prototyping at scale
- › Sewage management a potential failure point
- › Balancing innovation with public accountability
- › Complex multi-stakeholder engagement