



# Facilities Offered by the Pollution Research Group to Support Faecal Sludge Research

Chris Buckley

Susan Mercer

Santiago Septien

Tina Velkushanova

# Overview

1. Sanitation Systems
2. Laboratory
3. Mechanical
4. Field Testing
5. Systems and Prototypes
6. Training and Sharing
7. Costs
8. Contact Details

# Sanitation Systems

- Partnership with eThekweni Water and Sanitation
  - VIP Latrines
  - Urine Diversion toilets
  - Community Ablution Blocks
  - Pour-flush toilets
  - Black Soldier Flies
  - Conventional Systems
- Orientation for city leaders and officials
- Social and technical orientation
- Sampling and data gathering





**C  
L  
A**

**CLL**  
CANTON LUMBER CO.  
1000 W. 10TH ST.  
MILWAUKEE, WI 53233  
TEL: 414-224-1100  
WWW.CANTONLUMBERCO.COM

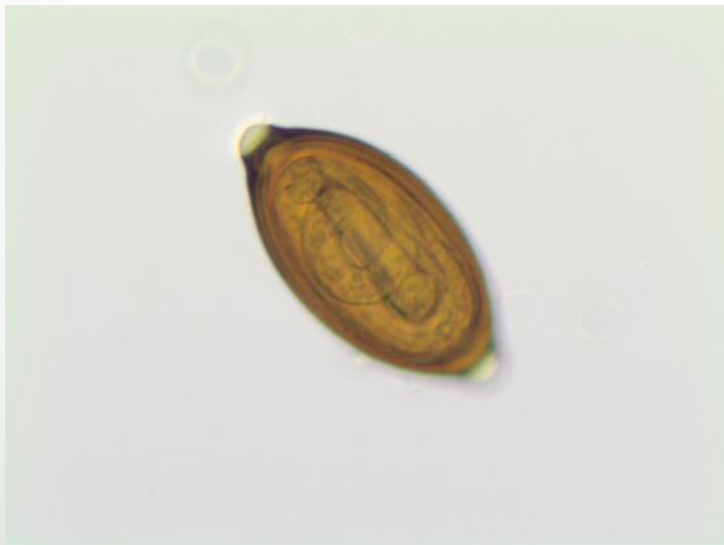
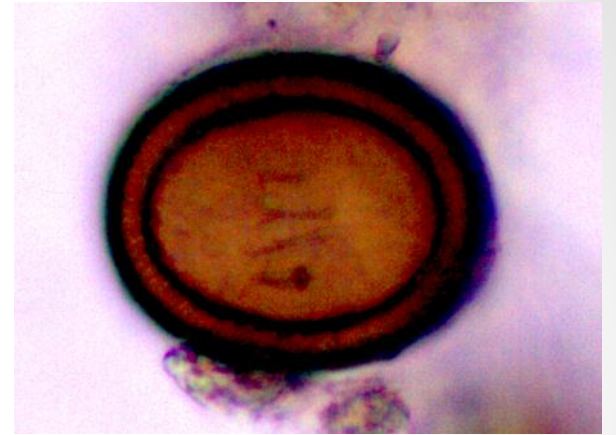
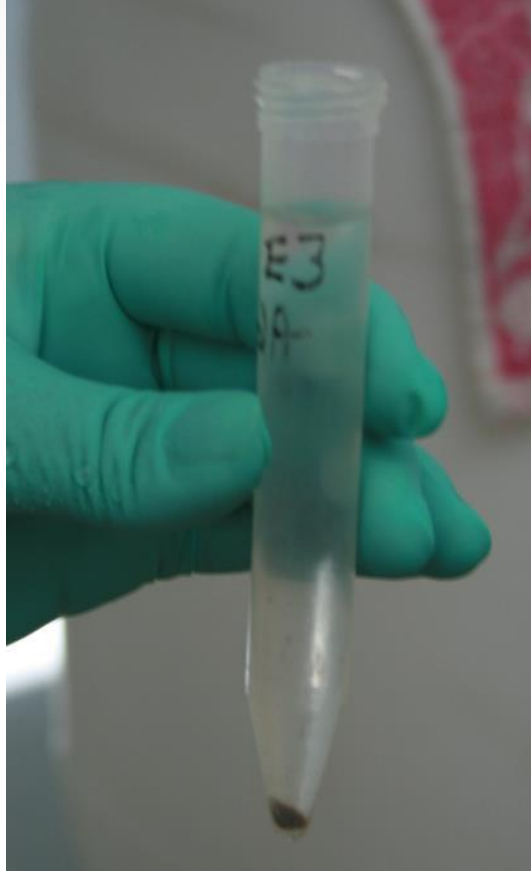




# Laboratory

- health and safety for analysing faeces and urine
- comprehensive equipment for faecal sludge characterisation
- preparation for external specialised assays
- multiple samples and replicates
- trained technicians and researchers
  - physical, chemical, microbiological, agricultural
- Standard Operating Procedures (SOPs)
- lab-scale piloting







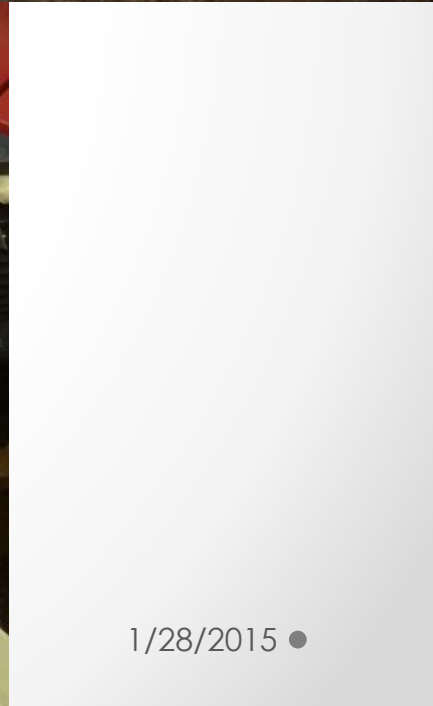
# Systems and Prototypes

- Pour-flush latrines
- pedestal / coating evaluation
- anaerobic baffled reactor
- agricultural reuse of excreta streams
- thermal processing
- anaerobic digestion



# Mechanical Workshop

- equipment construction
- modification



# Field testing (Newlands Mashu)

- laboratory
- pilot plants
- demonstration
- agricultural tests









12/29/2011 10:36 pm

# Training and Sharing

- training (home or away)
- development of SOPs
- host researchers (short / long term)
- data



# Cost

- 2015 – 2017 BMGF funding covers laboratory and staff
- consumables cost only
- own or PRG staff

# More Information

PRG delegates at FSM3

other presentations and posters

<http://prg.ukzn.ac.za>