



SANIRESCH

SANIRESCH – Brownwater treatment plant

SPONSORED BY THE



Federal Ministry of Education and Research



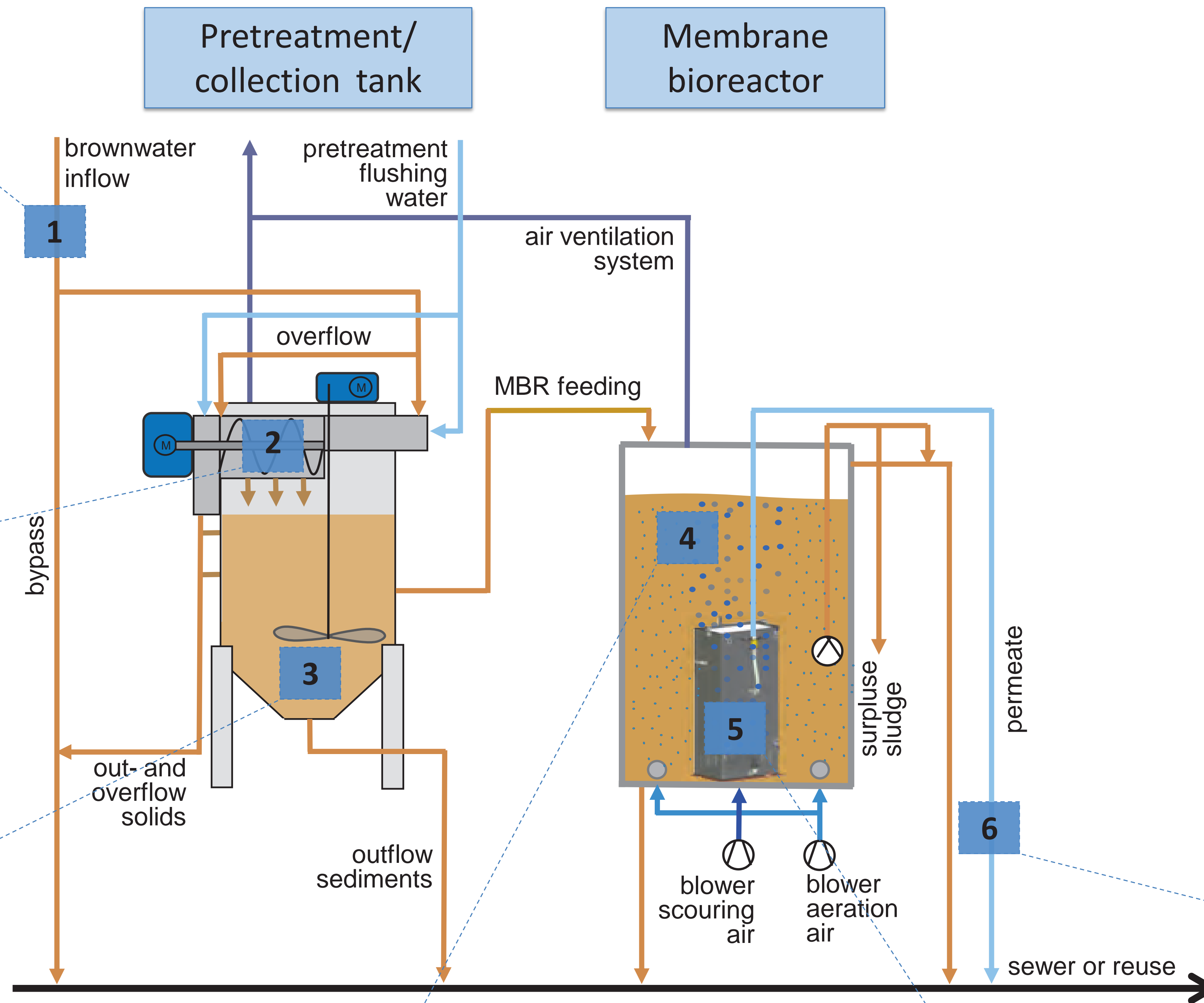
1 - Brownwater
From NoMix toilets: ~ 2000 l/d



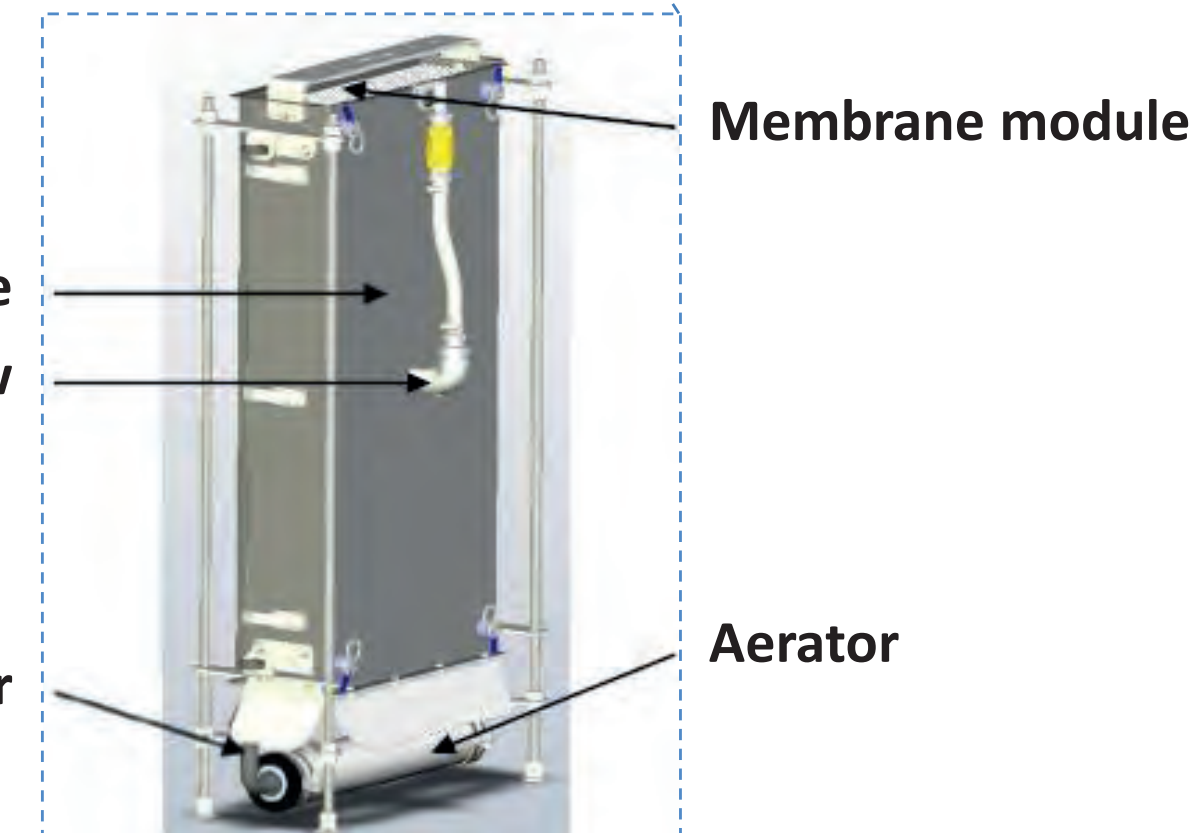
2 - Screen basket with screw
For solids separation (hole size: 3 mm)



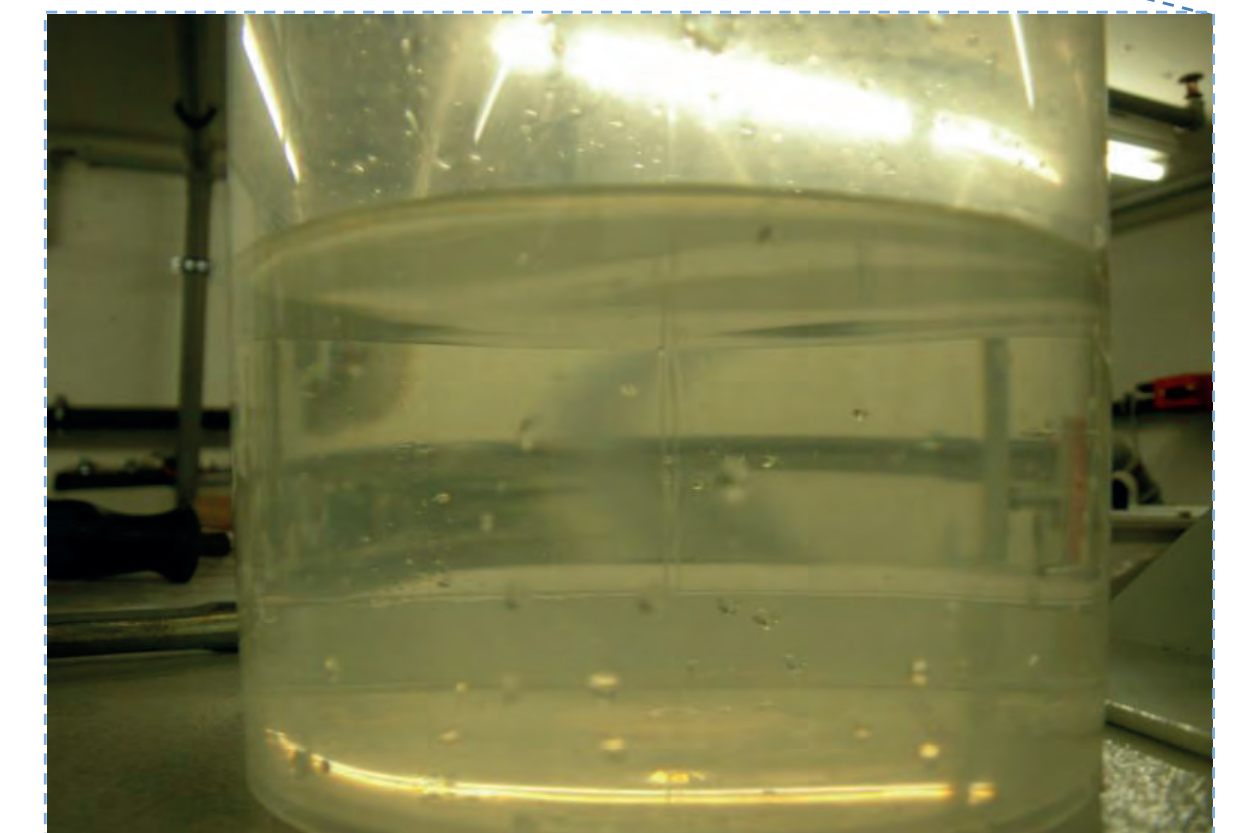
3 - Pretreatment tank
Volume of tank: ~ 400 l



4 - Membrane bioreactor
Volume of tank: 710 l

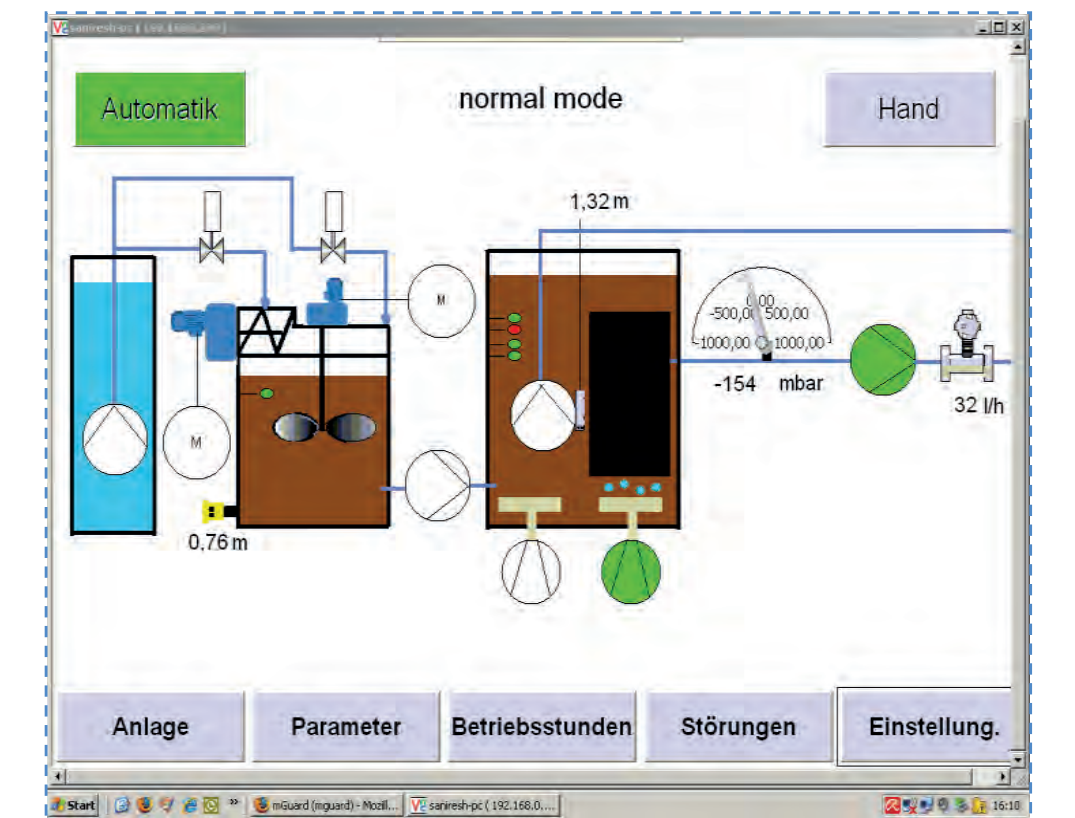


5 - Ultrafiltration module
Plate membrane: 3.5 m², pore size: 38 nm



6 - Permeate
Treated brownwater, COD: ~ 18 mg/l

Remote control



Control panel touch screen