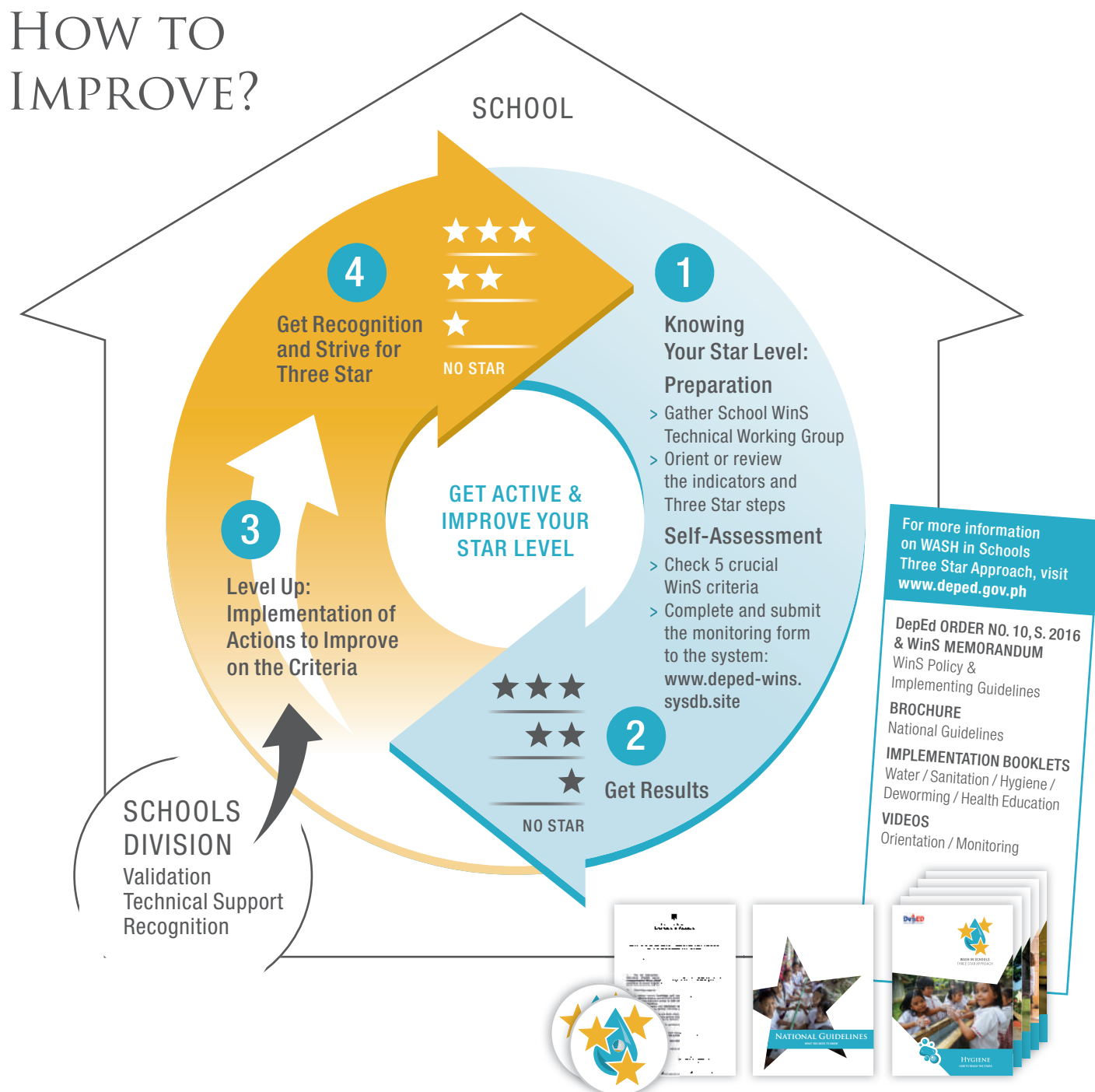


HOW TO IMPROVE?



SCHOOL-BASED MANAGEMENT FOR WATER, SANITATION AND HYGIENE IN SCHOOLS

Cognizant of DepED Order No. 10 "Policy and Guidelines for the Comprehensive Water, Sanitation and Hygiene (WASH) in Schools (WinS) Program", clean water, functional toilets and proper hygiene practice in schools are essential to achieving learning outcomes and are integral to school operations and improvement. Leveraging on Republic Act 9155, "Governance of Basic Education Act of 2001," the WinS Three Star Approach (TSA) applies School-Based Management as a pathway for schools and stakeholders to take local action towards improving and sustaining WASH services. The WinS TSA strengthens the

capacity of schools to identify their own needs; effectively introduce solutions; manage and sustain WinS; enhance stakeholder involvement; and mobilize local resources.

The WinS TSA generates a report that is critical for strategic school improvement planning which enables the school to program the incremental improvement on WinS over a period of time and the judicious use of the MOOE and other resources. The School Improvement Plan (SIP) serves as a vehicle to impress priorities for WinS and harness the participation of stakeholders, particularly

the local government units, in effective and strategic local actions. More concretely, it focuses the agenda of existing modalities for mobilizing stakeholder support, such as the Brigada Eskwela, Adopt-a-School Program and the Local School Board, on WinS.

The weaving of WinS TSA in SBM, therefore, promotes ownership, transparency, and accountability in ensuring healthy learning environments leading to the achievement of educational goals and objectives.



SECRETARY'S MESSAGE

I wish to congratulate everyone for the publication of the National Guidelines for the Water, Sanitation and Hygiene (WASH) in Schools (WinS) Program of the Department of Education (DepEd). The Department is pleased to present an overview of the WinS Program including the use of the Three Star Approach which is an integrated quality assurance, monitoring, and recognition system to support schools for a successful program implementation.

The development of the WinS Policy and Program recognizes that the core of DepEd's work is to enable our learners to reach their fullest potential by ensuring healthy and enabling learning environments. The WinS Program has put together a comprehensive package of doable practices, measures, and interventions for schools to improve towards the achievement of national standards. These standards are readily seen in the key WinS components, namely: availability of safe drinking water in school on a daily basis; adequate, clean, functional, and accessible school toilets; supervised daily group handwashing with soap and brushing of teeth with fluoride toothpaste among all schoolchildren; environmental sanitation in schools; semi-annual deworming of schoolchildren; safe practices in food handling and preparation; effective menstrual hygiene management in all schools; and health education for all students and personnel, augmented by capacity building for all DepEd program implementers.

The schools need to dedicate themselves to proper operation and maintenance to safeguard the investments and build on them to sustain the improvement of WASH conditions. The active participation of partners and stakeholders is vital to the success of the WinS Program. Likewise, the stakeholders need to align with the DepEd WinS Program mechanisms and closely work with the schools at all stages of implementation to transform challenges into desired outcomes.

With the support of all partners, DepEd is committed to expand and improve the implementation of the WinS Program towards the realization of our goal to deliver quality, accessible, relevant, and liberating basic education for all Filipino learners to have a better start in life, and thereby contribute to a better, brighter future for this nation.

Leonor Magtolis Briones
Secretary / Department Of Education

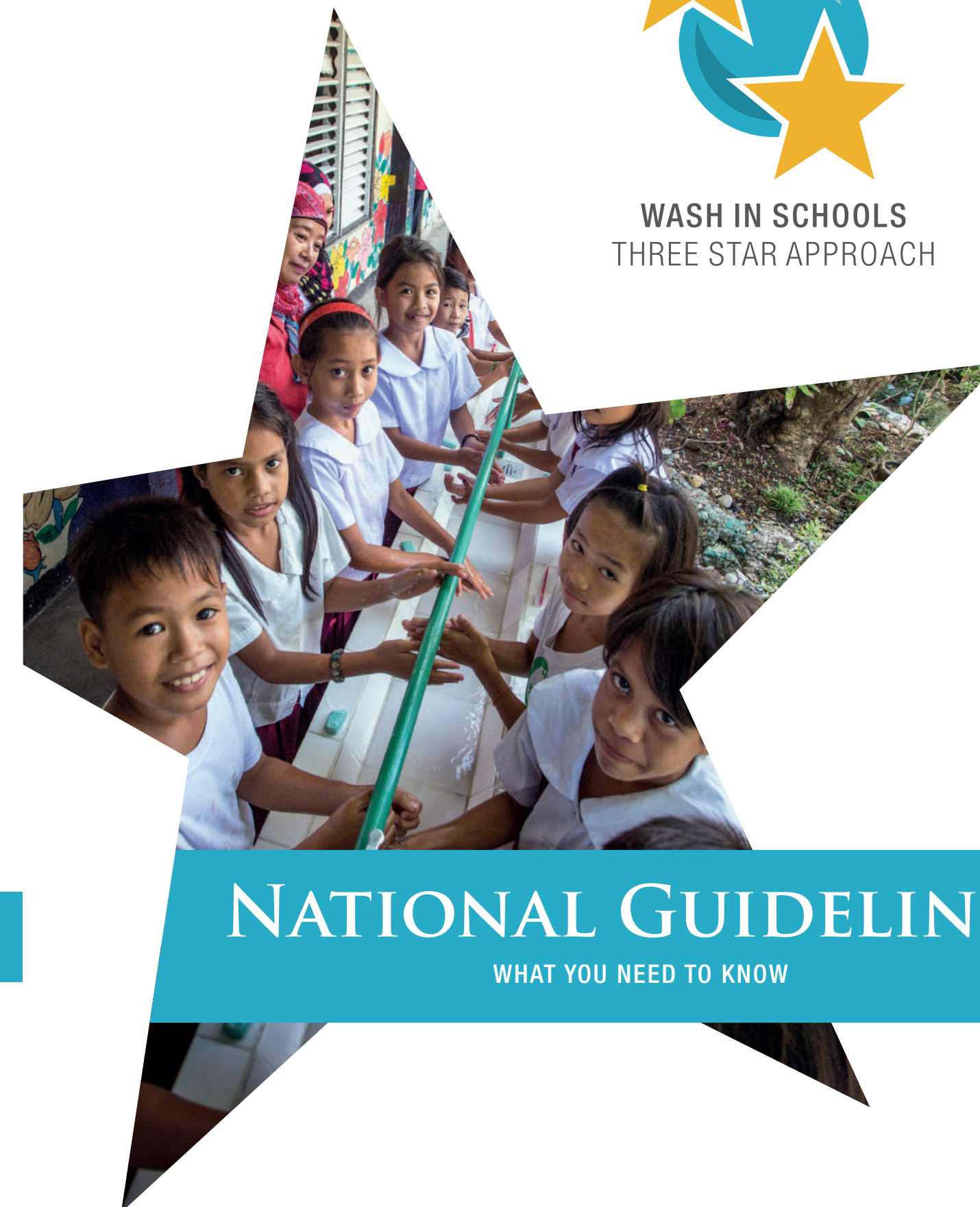


www.deped.gov.ph

WITH SUPPORT FROM:



WASH IN SCHOOLS
THREE STAR APPROACH



NATIONAL GUIDELINES

WHAT YOU NEED TO KNOW



WHY REACH THE STARS?
 Prevent hygiene-related diseases!
 Promote positive behaviour and life skills!
 Help the students to learn better and thrive!
 Promote gender equality!
 Affirm children's right to health and education!

THREE STAR CRITERIA

HYGIENE

★	★★	★★★
HANDWASHING		
Daily SUPERVISED group handwashing with soap for all children is led by teacher/s .	Daily SUPERVISED group handwashing with soap for all children is led by a mix of teachers and students .	Daily SUPERVISED group handwashing with soap for all children is led by student leaders .
Regular supply of soap for handwashing.	Regular supply of soap for handwashing.	Regular supply of soap for handwashing.
At least one functional group handwashing facility with soap.	Pupil to group handwashing facility with soap ratio of 1:200 for one shift .	Pupil to group facility with soap ratio of 1:100 for one shift .
		There are individual handwashing facilities with soap in strategic areas in the school (e.g. near canteen/eating areas, play areas and toilets). The practice of individual handwashing with soap is done during critical times.
TOOTHBRUSHING		
Daily SUPERVISED activity of toothbrushing with fluoride toothpaste for all children is led by teacher/s .	Daily SUPERVISED activity of toothbrushing with fluoride toothpaste for all children is led by a mix of teachers and students .	Daily SUPERVISED activity of toothbrushing with fluoride toothpaste for all children is led by student leaders .
Regular supply of fluoride toothpaste for the toothbrushing activity.	Regular supply of fluoride toothpaste for the toothbrushing activity.	Regular supply of fluoride toothpaste for the toothbrushing activity.
ENABLERS		
Repair and maintenance requirements are reflected in the School Improvement Plan (SIP) and Annual Improvement Plan (AIP).	Repair and maintenance requirements are reflected in the School Improvement Plan (SIP) and Annual Improvement Plan (AIP).	Repair and maintenance requirements are reflected in the School Improvement Plan (SIP) and Annual Improvement Plan (AIP).
Soap, toothbrush and toothpaste are provided by the school through DepEd funds only (i.e. MOOE).	Soap, toothbrush and toothpaste are provided by the school through DepEd funds complemented by external partners .	Soap, toothbrush and toothpaste are provided by the school through DepEd funds complemented by external partners .
MENSTRUAL HYGIENE MANAGEMENT (MHM)		
Sanitary pads are accessible in the school.	Sanitary pads are accessible in the school.	Sanitary pads are accessible in the school.
	There is information on proper disposal of sanitary pads in the girls toilet.	There is information on proper disposal of sanitary pads in the girls toilet.
	DepEd approved IEC materials on menstrual hygiene management for teachers are available.	DepEd approved IEC materials on menstrual hygiene management for teachers and students are available.
		There is a rest space/changing room for MHM that is secure, private and comfortable (not necessarily in the CR).



SANITATION

★	★★	★★★
TOILETS		
The overall pupil to toilet seat ratio is 101 students or higher and there are at least two functional and clean toilets that are gender segregated.	The overall pupil to toilet seat ratio is 51–100 students and there are more than two functional and clean toilets that are gender segregated as needed based on enrolment.	The functional pupil to toilet seat ratio (by gender) is 50 students or less .
Toilets are secure, private, with door and lock, have lighting, adequate ventilation and wrapping materials for used pads.	Toilets are secure, private, with door and lock, have lighting, adequate ventilation and wrapping materials for used pads.	Toilets are secure, private, with door and lock, have lighting, adequate ventilation and wrapping materials for used pads.
	There is a handwashing facility with soap within or near the toilets .	There is a handwashing facility with soap within or near the toilets .
	There is a facility for washing IN at least one female toilet for MHM.	There is a facility for washing IN female toilets for MHM.
	Detached toilets are located within view of school building and people.	Detached toilets are located within view of school building and people.
		There is a toilet accessible to persons with limited mobility .
Daily cleaning of toilets, and handwashing and other water facilities.	Daily cleaning of toilets, and handwashing and other water facilities.	Daily cleaning of toilets, and handwashing and other water facilities.
Funding for regular maintenance and repair of toilets, handwashing and other water facilities comes from the regular school budget (i.e. MOOE) and/or other DepEd funds .	Funding for regular maintenance and repair of toilets, handwashing and other water facilities comes from the regular school budget (i.e. MOOE) and/or other DepEd funds .	Funding for regular maintenance and repair of toilets, handwashing and other water facilities comes from the regular school budget (i.e. MOOE) and/or other DepEd funds .
WASTE MANAGEMENT		
No burning of waste.	No burning of waste.	No burning of waste.
Segregated trash bins with cover are available in all classrooms .	Segregated trash bins with cover are available in all classrooms and toilets .	Segregated trash bins with cover are available in all classrooms, toilets, canteens, offices, clinics, play areas, gardens, hallways, and gyms .
Waste segregation is practiced .	Waste segregation is practiced .	Comprehensive waste segregation system is in place , such as policy, facility and practice, and sanctions for non-compliance.
No garbage collection services BUT school has compost facility for biodegradable waste and safe disposal of non-bio-degradable waste such as properly fenced refuse pits (burying).	Garbage is collected at least once a week OR school has compost facility for bio-degradable waste and safe disposal of non-biodegradable waste such as properly fenced refuse pits (burying).	Garbage is collected at least twice a week OR school has compost facility for bio-degradable waste and materials recovery facility (MRF) for recyclable waste.
Functional septic tank is available for all toilets.	Functional septic tank is available for all toilets.	Functional septic tank is available for all toilets.
Functional drainage from kitchen and wash areas to ensure that there is no stagnant water in the school.	Functional drainage from kitchen and wash areas to ensure that there is no stagnant water in the school.	Functional drainage from kitchen and wash areas to ensure that there is no stagnant water in the school.
		In case the school is in a flood prone area, a system (policy, practices, people, process, & structure) is in place to ensure that there is no stagnant water in the school.
FOOD SAFETY		
All food handlers are oriented and practice food safety measures .	All food handlers should have a health certificate .	All food handlers should have a health certificate and for schools with canteen, an updated sanitary permit .

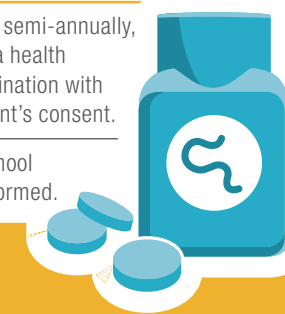
WATER

★	★★	★★★
Safe drinking water is not provided by the school. Children are required to bring their own drinking water.	Safe drinking water is provided by the school but supply is not regular .	Safe drinking water is provided for free for all children in the school at all times .
The school coordinates with the relevant agency/office to test the quality of water.	The quality of water is tested once every calendar year in coordination with the relevant agency/office.	The quality of water is tested more than once every calendar year in coordination with the relevant agency/office.
Regardless of source, water for cleaning is available only for certain days of the week.	Regardless of source, water for cleaning is available on a daily basis but only on certain hours of the day .	Regardless of source, water for cleaning is available on a daily basis in all school hours .



DEWORMING

★	★★	★★★
Deworming is done semi-annually, in the presence of a health personnel, in coordination with DOH, and with parent's consent.	Deworming is done semi-annually, in the presence of a health personnel, in coordination with DOH, and with parent's consent.	Deworming is done semi-annually, in the presence of a health personnel, in coordination with DOH, and with parent's consent.
50 – 74 % of school students were dewormed.	75 – 84 % of school students were dewormed.	At least 85 % of school students were dewormed.



HEALTH EDUCATION

★	★★	★★★
IEC materials are present only in the schoolboard or wall .	IEC materials are present in classrooms and strategic places (e.g. canteen, play areas, toilets, handwashing facilities, etc.).	IEC materials are present in classrooms and strategic places (e.g. canteen, play areas, toilets, handwashing facilities, etc.).
There are organized teams and accountable units to promote WinS (e.g. TWGs, student clubs).	There are organized teams and accountable units to promote WinS (e.g. TWGs, student clubs).	There are organized teams and accountable units to promote WinS (e.g. TWGs, student clubs).
	WinS is part of INSET .	WinS is part of INSET .
		Available WinS learning / instructional materials in support of teaching WinS in the K to 12 curriculum.
	Advocacy is done during GPTA assembly .	There are planned and organized activities for parents/stakeholders for learning and advocating WinS.
	WinS is part of the extra-curricular program of students .	WinS is part of the extra-curricular program of students .

