



WASHaLOT 3.0 // INSTALLATION, OPERATION & MAINTENANCE

USER'S GUIDE

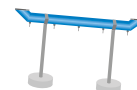


CHECK
YOUR
WASHaLOT 3.0
PACKAGE

FIXED VERSION

- One WASHaLOT 3.0 pipe
- One set of stands (3 for long, 2 for short version)
- Cleaning tools
- One to two spare water outlets
- Stickers with instructions for use and cues for physical distancing

MOBILE VERSION
// AVAILABLE FOR
WASHaLOT 3.0 SHORT



THE REPUBLIC OF UGANDA
Ministry of Water and Environment



Implemented by:



INSTALLATION

The handwashing facility WASHaLOT is prefabricated and locally made in Uganda. Quick installation, easy maintenance and repair make the WASHaLOT appropriate for public places, institutions and emergency settings. Moreover, there is a mobile WASHaLOT version for temporary usage. The stakeholders of the receiving institutions need to be engaged in setting up the WASHaLOT and keeping it functional. Different stakeholders should also be aware of planned activities and involved both in deciding where to place the WASHaLOT and in delegating responsibilities to keep them clean and functional.

CHECK YOUR INSTALLATION REGARDING THE FOLLOWING FOUR ELEMENTS:

1. THE RIGHT LOCATION

- Near entrances and other highly frequented areas.
- Access to both sides.
- Shaded area or under a roof.
- Near water source.
- Clean and hygienic surroundings.

2. STANDS & PIPE

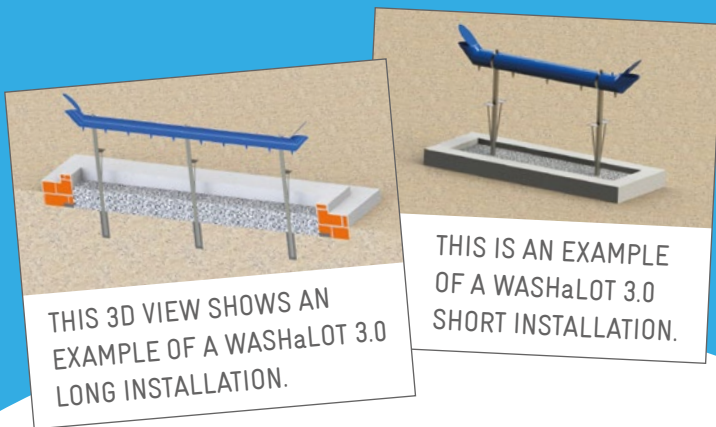
- The stands are fixed in a vertical position.
- The WASHaLOT pipe assembly is levelled horizontally at appropriate height.
- The WASHaLOT pipe is secured in position by clamps and attached to the stands with bolts.

3. WATER OUTLETS

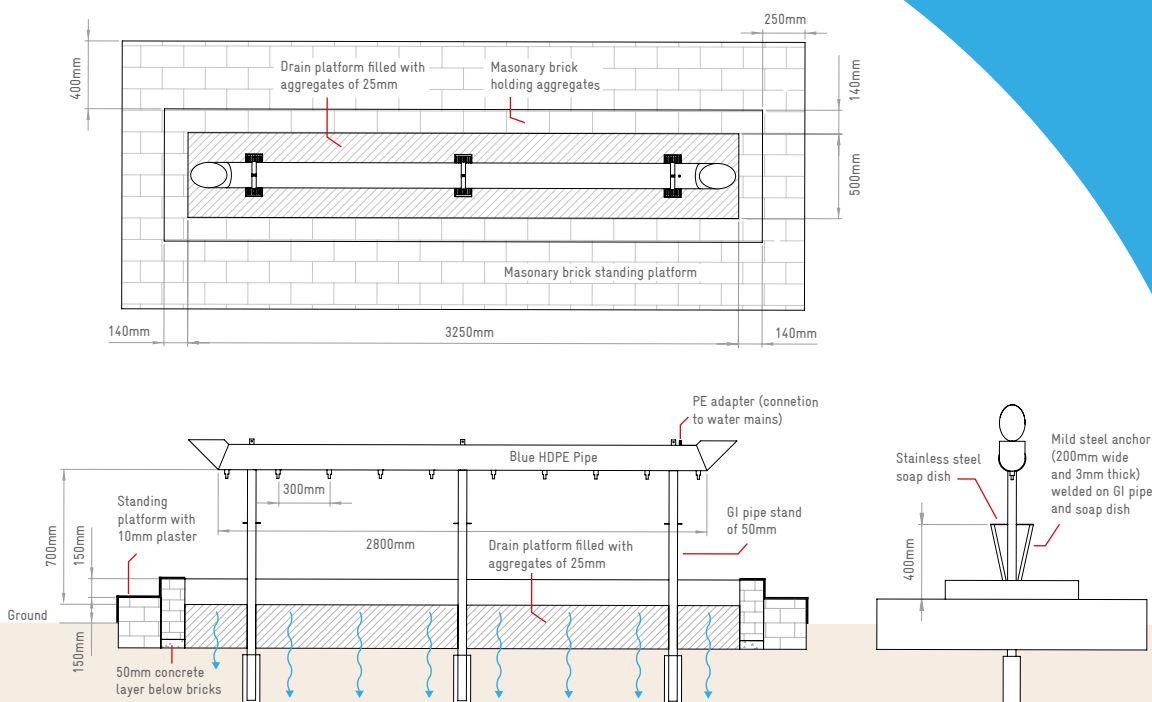
- The water outlets are fixed tight on the WASHaLOT pipe without leakages.
- Water outlets are functional and release water when touched manually (and do not release water when not touched).
- Spare outlets are available.

4. DRAINAGE

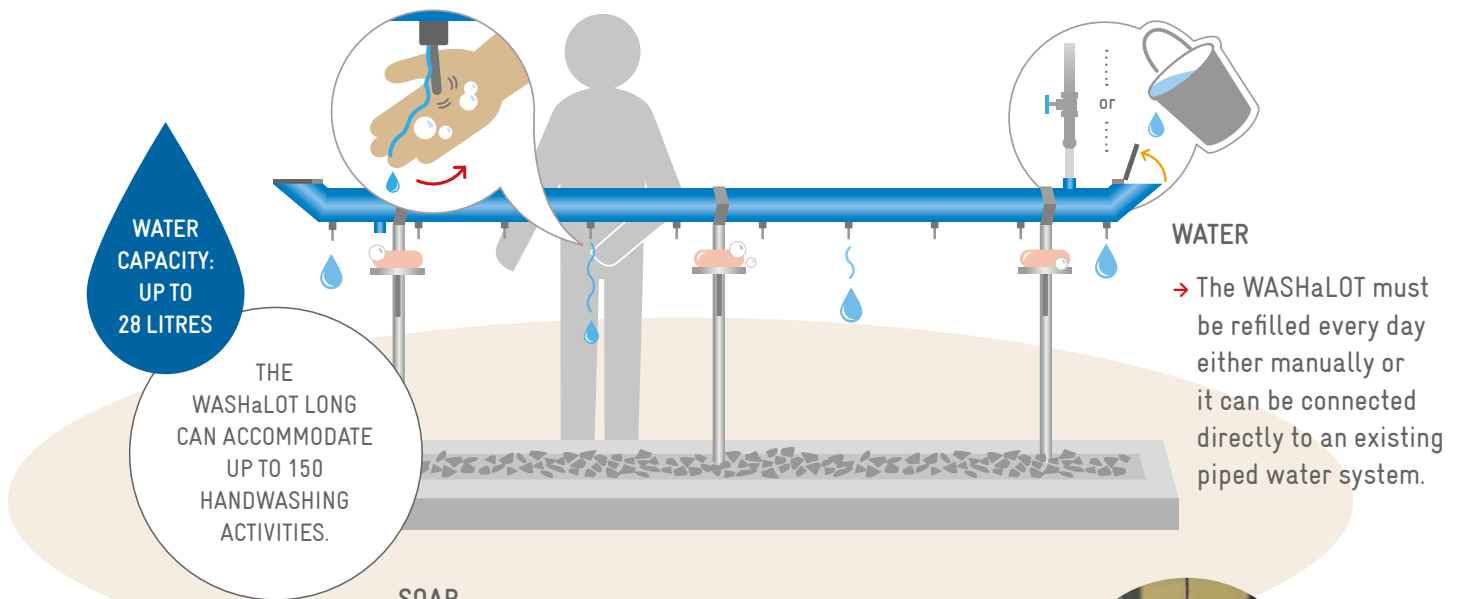
- The WASHaLOT is set up with sufficient drainage (aggregates, flower bed, existing drainage or bucket drain) to prevent water ponds and runlets.



HERE ARE TECHNICAL DRAWINGS OF A WASHaLOT 3.0 LONG INSTALLATION:



OPERATION



SOAP

- Soap should be available at the WASHaLOT at all times.
- Soap nets or trays to hold soap bars or a liquid soap dispenser can be used on the WASHaLOT and suspended from the WASHaLOT where possible.



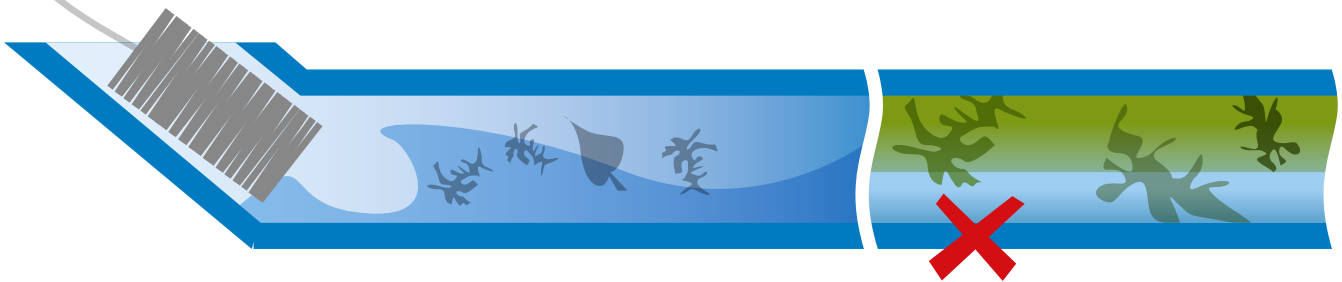
BEAUTIFY YOUR WASHaLOT

The pipe of the WASHaLOT is made from High Density Polyethylene (HDPE) which does not hold paint well after a year or two. Stickers can communicate messages to users e.g. usage instructions or cues for physical distancing. Beautify your WASHaLOT using vinyl stickers, which are commonly used for car graphics and outdoor designs. Artistically-minded stakeholders can take part in beautifying the WASHaLOT with vinyl stickers to present art and send messages to their peers.



CLEANING & MAINTENANCE OF THE WASHaLOT

Proper and regular maintenance of the WASHaLOT is needed to ensure its functionality and maximize its service life.



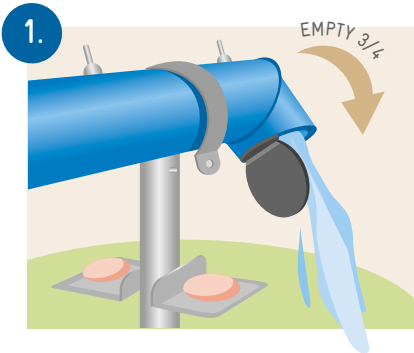
CLEAN REGULARLY:
FOLLOW THE CLEANING STEPS
AT LEAST ONCE EVERY MONTH.

**AVOID STAGNANT WATER WHICH
CAUSES ALGAL ACCUMULATION:**
FLUSH OUT REMAINING WATER
BEFORE EACH WEEKEND
OR IF THE WASHaLOT IS NOT TO BE
USED FOR MORE THAN 2 DAYS.

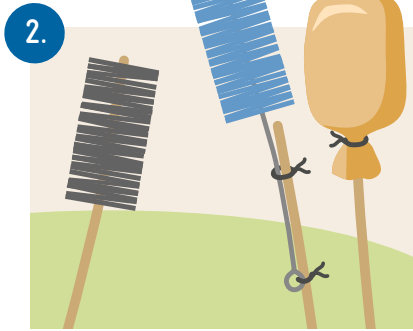
COMMON PROBLEMS & TROUBLESHOOTING

<p>DRIPPING WATER FROM THE WATER OUTLET EVEN WHEN NOT IN USE! Dirt and silts have entered into the water outlet (lever) and it is clogged inside. Small dirt particles affect the leak-free mechanism inside the water outlet which causes the water to drip.</p>	<p>→ Push the lever five (5) times upwards, then at the fifth time, move the lever in a circular motion also five (5) times to drain the clog.</p>
<p>DIRT INTENTIONALLY THROWN INSIDE THE WASHaLOT! Due to the easy open cover, some users vandalized the WASHaLOT by throwing dirt or other things into the pipe of the WASHaLOT.</p>	<p>→ Clean the WASHaLOT thoroughly and this time add commonly available detergent soap into the water. Advise users frequently not to vandalize the WASHaLOT.</p>
<p>LOST OR DAMAGED WATER OUTLET! Parts of the water outlets might have been removed or damaged. Always advise users to properly use the WASHaLOT and report any technical difficulties.</p>	<p>→ Remove the damaged water outlet and replace with a spare provided in the package. Be sure to apply adequate teflon tape on the thread before screwing in the new water outlet.</p>

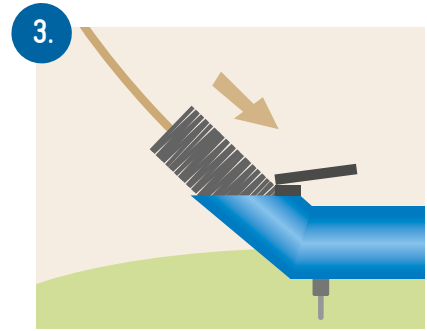
CLEANING STEPS



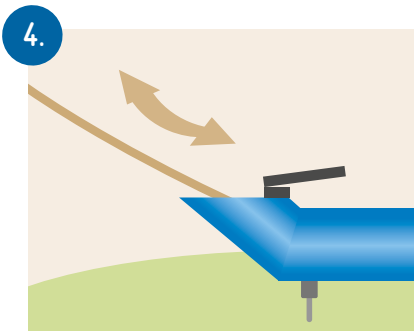
- To clean the WASHaLOT, flush the remaining water until only a quarter of the water is left inside the pipe.
- If necessary, unbolt the clamps using the right spanner and remove the pipe from the stands to clean.



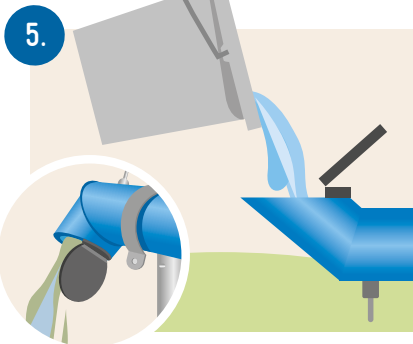
- Use the cleaning tool that comes with the WASHaLOT to scrub off dirt inside the pipe.
- Alternatively, you can use a brush or a sponge attached to a flexible rod which is at least 3 meter long.



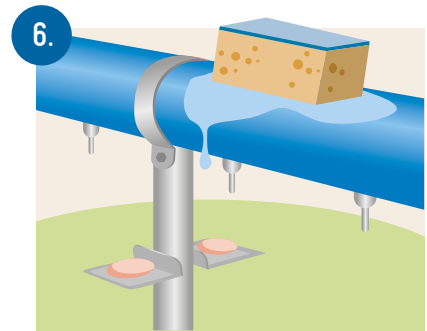
- Insert the brush through the water inlet of the WASHaLOT.



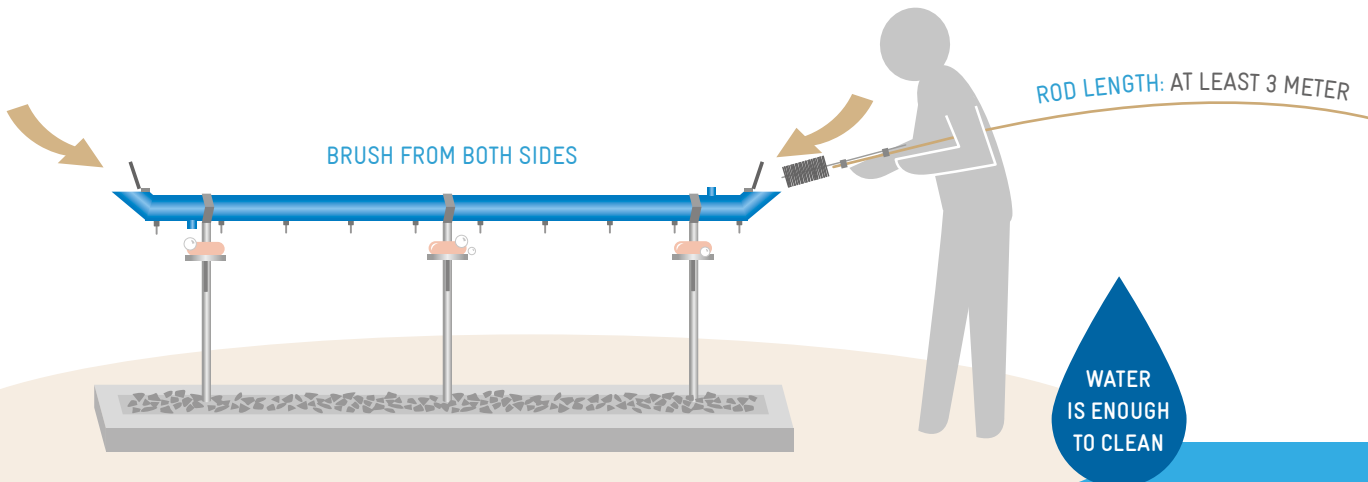
- Use the rod to control brushing of the interior of the pipe.



- After brushing both ends of the WASHaLOT, flush the dirty water and rinse the pipe with clean water until it is clean.



- Clean the exterior pipe surfaces and stands with a sponge.
- Check that all outlets and bolts are fixed and secured.





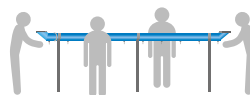
MATERNITY WARD

SHAKAL A HEALTH CENTRE
**HANDWASHING
STATION**

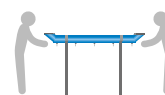
PANDEMIC ADJUSTMENTS

- Water outlets are covered according to specifications for physical distancing (e.g. with rubber sleeves or foil).
- Stickers can indicate physical distancing, e.g. open and closed outlets.
- Floor markings (e.g. with paint, tape, hoops or bike tires) help for orientation and for keeping a distance.

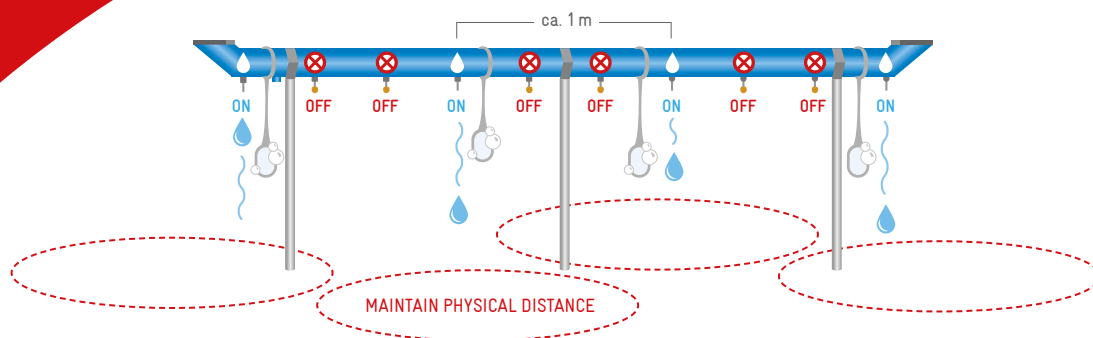
PANDEMIC RECOMMENDATIONS:



4 PEOPLE PER
WASHaLOT LONG



2 PEOPLE PER
WASHaLOT SHORT





WASHaLOT 3.0 // FEATURES

- The WASHaLOT 3.0 is the third iteration of WASHaLOT handwashing facilities that has been tested and used in various countries and settings since 2013.
- The WASHaLOT is a prefabricated washing system, which can be used for handwashing, toothbrushing and footwashing.
- Allows groups of users to perform hygiene activities either together or individually due to individual water outlets.
- The water outlets are designed to release water only when manually touched and thereby reduce water consumption.
- The water carrying pipe can be connected to a piped water supply or can be filled manually.
- Easy operation and maintenance due to wide openings of water inlets at both ends.
- The WASHaLOT is available as a long and a short model. The long model accommodates up to 20 users and the short model up to 10 users at the same time.
- One pipe filling carries up to 28 litres (long) or 12 litres (short) and will accommodate about 150 (long) or 80 (short) handwashing activities respectively.

Imprint

The WASHaLOT has been developed by the GIZ Fit for School Programme in cooperation with the GIZ Sustainable Sanitation Programme. It was first introduced in Uganda in 2018 by Sanitation for Millions, a globally acting multi-donor programme implemented by GIZ.

Published by:
Deutsche Gesellschaft für Internationale Zusammenarbeit (GIZ) GmbH
On behalf of the German Federal Ministry for
Economic Cooperation and Development (BMZ)
Registered offices Bonn and Eschborn, Germany

Water Supply and Sanitation for Refugee Settlements and
Host Communities in Northern Uganda (WatSSUP)
Plot 128, Luthuli Avenue, Bugolobi
P.O. Box 10346, Kampala, Uganda

Sustainable Sanitation Programme
Postfach 5180, 65726 Eschborn, Germany
www.giz.de/en // www.fitforschool.international

Sanitation for Millions Global Programme
s4m@giz.de

Authors: Frederick Madrid, Bella Monse, Jan-Christoph Schlenk
Special Advisors and Reviewers: Anna Kristina Kanathigoda,
Franziska Volk, Annkathrin Tempel, Louisa van den Bosch, Lena Löchte
Design and layout: Christine Lüdke, buero luedke GmbH
Photos: Joan Nyamwiza & Raymond Lukwago (WatSSUP Programme)
Technical drawing: Prit Salian (WatSSUP Programme)

For more Information please contact:
Nana Odoi, nana.odoi@giz.de or
Arne Panesar, arne.panesar@giz.de

June 2021

This publication is licensed under
Creative Commons: Attribution – NonCommercial
– NoDerivatives 4.0 International



partner of

**sustainable
sanitation
alliance**