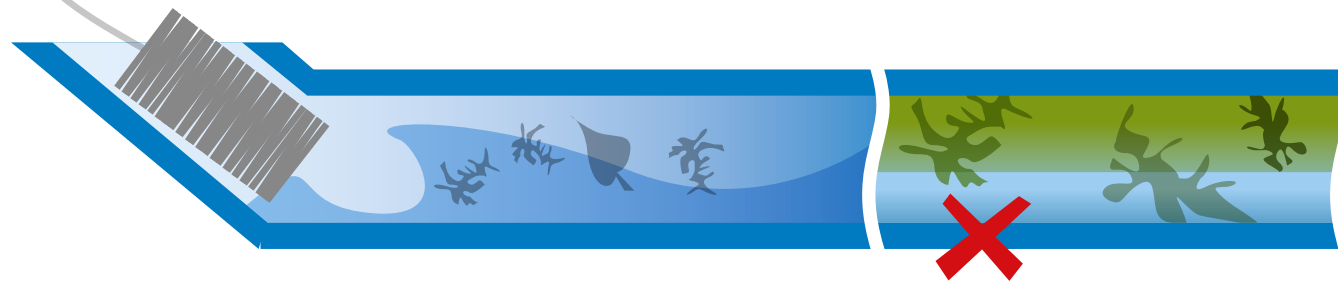


# CLEANING & MAINTENANCE OF THE WASHaLOT

Proper and regular maintenance of the WASHaLOT is needed to ensure its functionality and maximize its service life.



**CLEAN REGULARLY:**  
FOLLOW THE CLEANING STEPS  
AT LEAST ONCE EVERY MONTH.

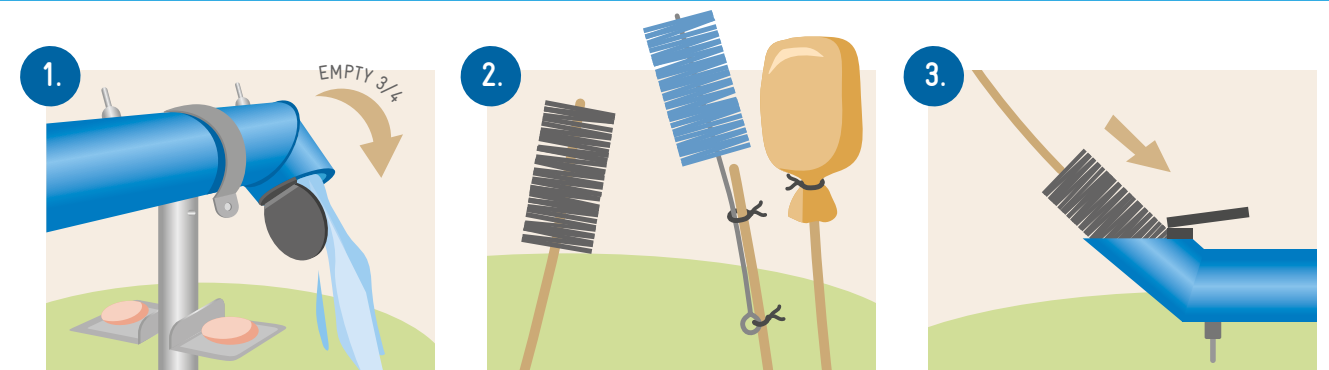
**AVOID STAGNANT WATER WHICH  
CAUSES ALGAL ACCUMULATION:**  
FLUSH OUT REMAINING WATER  
BEFORE EACH WEEKEND  
OR IF THE WASHaLOT IS NOT TO BE  
USED FOR MORE THAN 2 DAYS.

## COMMON PROBLEMS & TROUBLESHOOTING

<p><b>DRIPPING WATER FROM THE WATER OUTLET EVEN WHEN NOT IN USE!</b> Dirt and silts have entered into the water outlet (lever) and it is clogged inside. Small dirt particles affect the leak-free mechanism inside the water outlet which causes the water to drip.</p>	→	<p>Push the lever five (5) times upwards, then at the fifth time, move the lever in a circular motion also five (5) times to drain the clog.</p>
<p><b>DIRT INTENTIONALLY THROWN INSIDE THE WASHaLOT!</b> Due to the easy open cover, some users vandalized the WASHaLOT by throwing dirt or other things into the pipe of the WASHaLOT.</p>	→	<p>Clean the WASHaLOT thoroughly and this time add commonly available detergent soap into the water. Advise users frequently not to vandalize the WASHaLOT.</p>
<p><b>LOST OR DAMAGED WATER OUTLET!</b> Parts of the water outlets might have been removed or damaged. Always advise users to properly use the WASHaLOT and report any technical difficulties.</p>	→	<p>Remove the damaged water outlet and replace with a spare provided in the package. Be sure to apply adequate teflon tape on the thread before screwing in the new water outlet.</p>



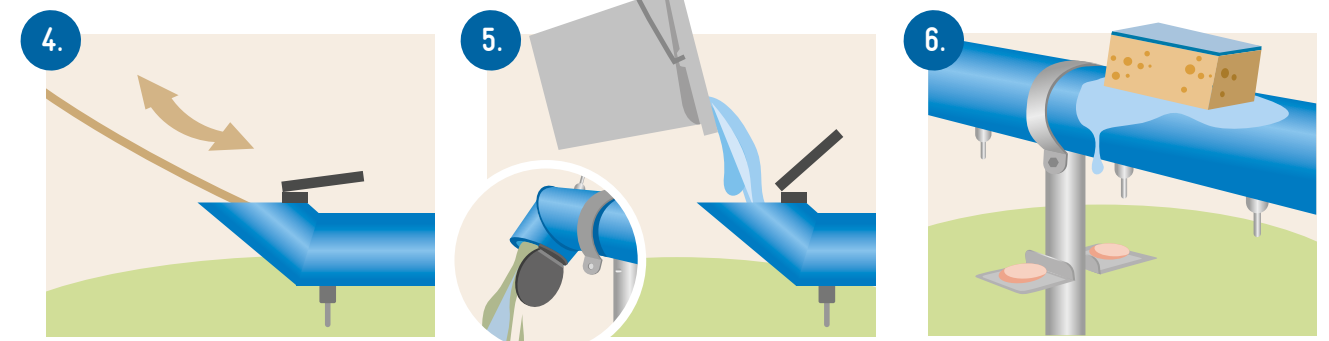
## CLEANING STEPS



- To clean the WASHaLOT, flush the remaining water until only a quarter of the water is left inside the pipe.
- If necessary, unbolt the clamps using the right spanner and remove the pipe from the stands to clean.

- Use the cleaning tool that comes with the WASHaLOT to scrub off dirt inside the pipe.
- Alternatively, you can use a brush or a sponge attached to a flexible rod which is at least 3 meter long.

- Insert the brush through the water inlet of the WASHaLOT.



- Use the rod to control brushing of the interior of the pipe.

- After brushing both ends of the WASHaLOT, flush the dirty water and rinse the pipe with clean water until it is clean.

- Clean the exterior pipe surfaces and stands with a sponge.
- Check that all outlets and bolts are fixed and secured.

