

# Contribution of ODA on WASH Progress and implication of the UK Cuts

Abel Dugange  
Director – SwM Tanzania

Presented at SANCOP meeting on 29 June  
2021



## Country commitments for WASH

- Tanzania Implements the WSDP; targeting universal access to improved WASH services by 2025 ( Country DV 2025).
- Committed as well to accomplish the SDGs 2030 agenda: *leave no one behind*

- ❖ Overall access to water supply has increased to 70% and 85% in 2018/19 from 51% and 68% in 2014/15 respectively.
- ❖ 66.3% and only **26.28%** of HHs have safely managed sanitation facilities
- ❖ 41.08% of HHs have access to basic hand washing facilities



- Progress

# Funding Source for WSDP: MoW Budget Speech

Planned development budget for WASH (in billion TZs)				
FY		Local sources	Foreign contribution	Foreign contribution as a % of total
2018/2019	673,214,033,677.00	443,214,034,677.00	229,999,999,000.00	34%
2019/2020	610,469,888,530.00	349,449,000,000.00	261,020,888,530.00	43%
2020/2021	705,008,930,000	349,449,000,000	355,559,930,000.00	50%
2021/2022	646,630,000,000.00	346,630,000,000.00	300,000,000,000.00	46%
				44%

[UKAID/FDCO](#) is one of the few major development partners with rural bias: reaching the poor majority;

- ❖ Rural water supply through [PbR](#)
- ❖ Major donor of NSC, closing at over 60% HH with access to improved sanitation

## Geographical bias of other Major WASH development Partners 2014 - 2023

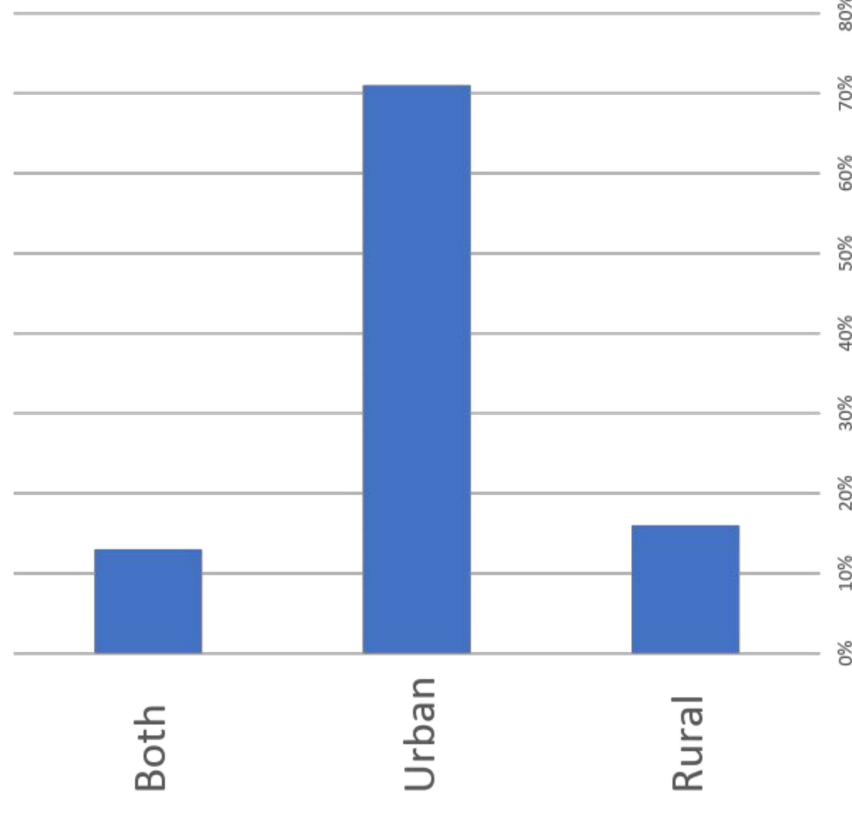


Figure 6: Rural-Urban disparities on access to safe water supply service

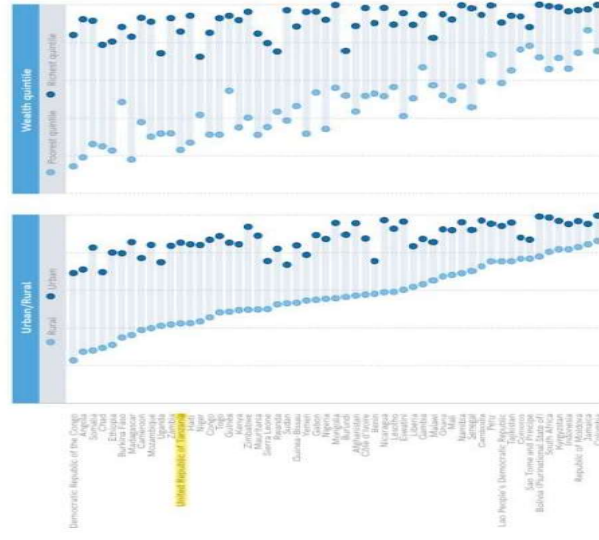


Figure 3: Global performance on sanitation services

27 countries have increased use of basic sanitation services by >20 percentage points since 2000

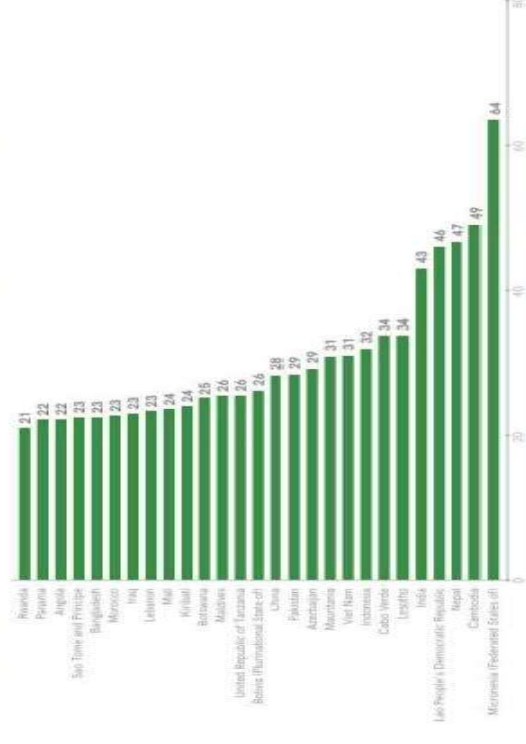


FIGURE 3: Percentage point increase in proportion of population using at least basic sanitation services, 2000-2017 (%)

# Local vs. development partners disbursements in 2019/2020

Figure 16: MoW's 2019/20 Development Budget (Domestic Funds) Disbursements

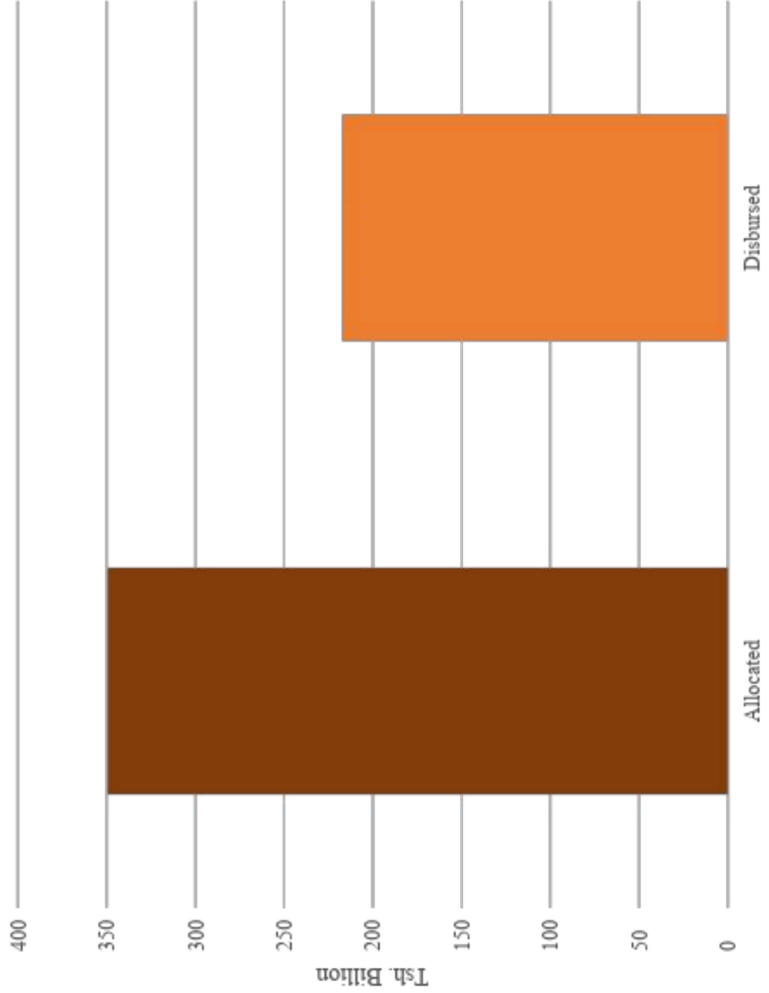
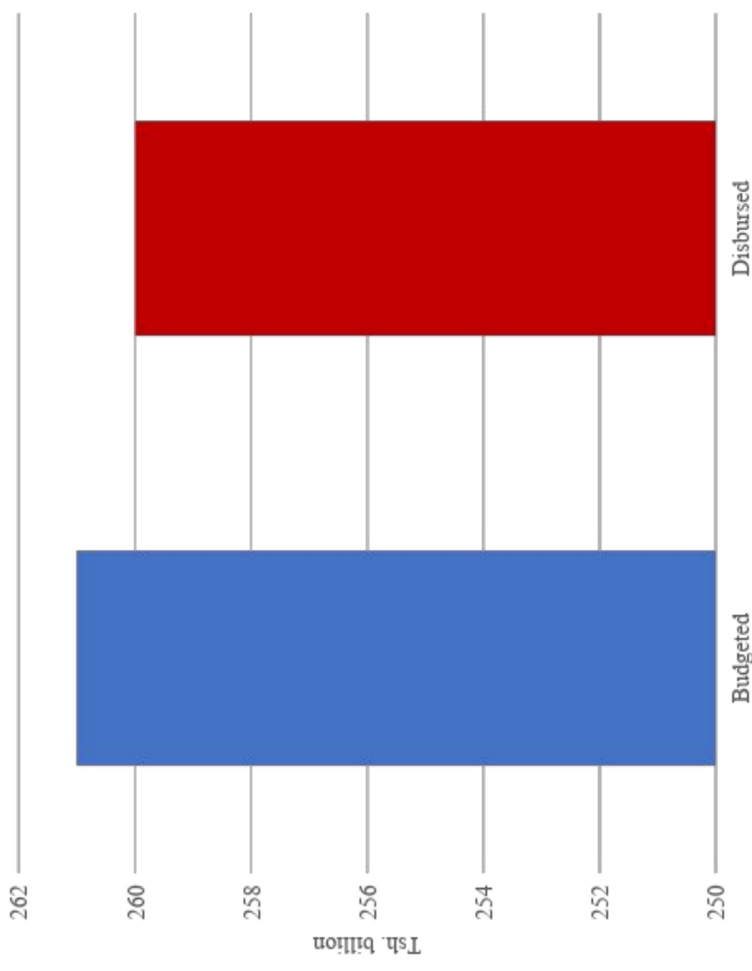
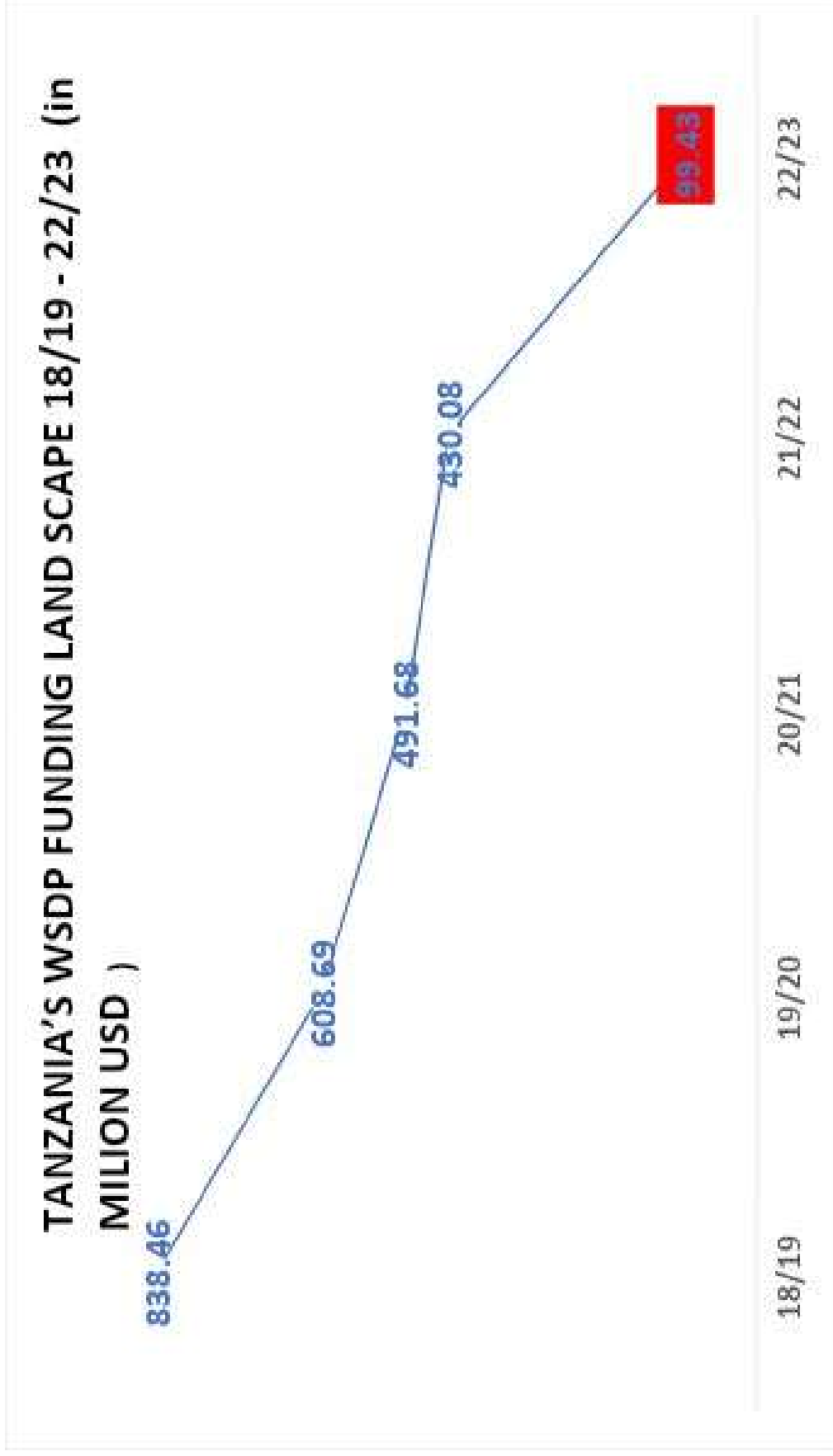


Figure 17: MoW's 2029/20 Development (Donor/Forex Funds) Disbursements



Development partners contributed 54.5% of actual annual disbursements

# What is worrying us?

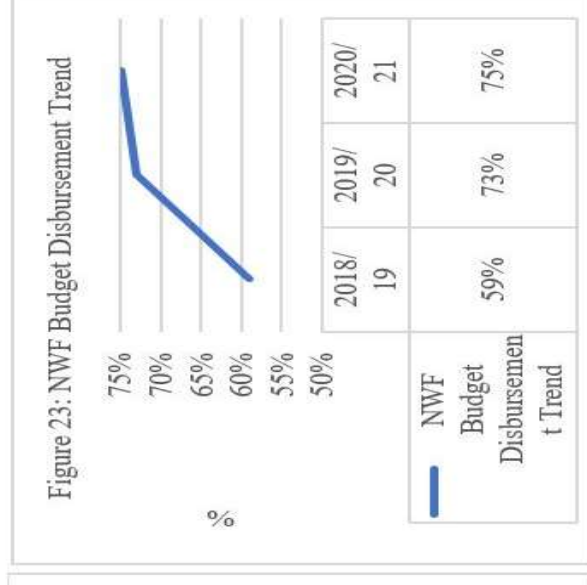
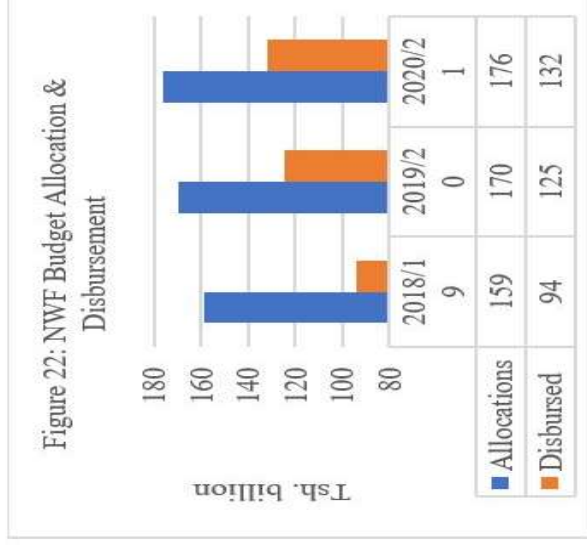


## FCDO's decision making is significantly impacting:

- ❑ Rural communities in need of water supply and sanitation services
- ❑ Country commitments on leave on one behind with WASH access by 2025 and/or 2030
- ❑ Global commitments on WASH access
- ❑ Implementing partners (NGOs) at country level
- ❑ In the long run affects achievement of other SDGs

# Our call as an implementing partner in Tanzania

- ❑ Slow transition to countries budget independence.
  - ❖ Countries (Tanzania specifically) still have low revenue collection targeted for WASH services, though growing slowly



- ❑ Continue with ODA on WASH as one among key development catalysts. Integrating with other sectoral benefits (health, economy etc)
- ❑ Support countries to improve on tax collections my managing;
  - Tax avoidance
  - Tax evasion