



SFD Lite Report

Brahmanbaria Municipality Bangladesh

This SFD Lite Report was prepared by
CWIS-FSM Support Cell, DPHE

Date of production/ last update: 03/10/2022

1 The SFD Graphic

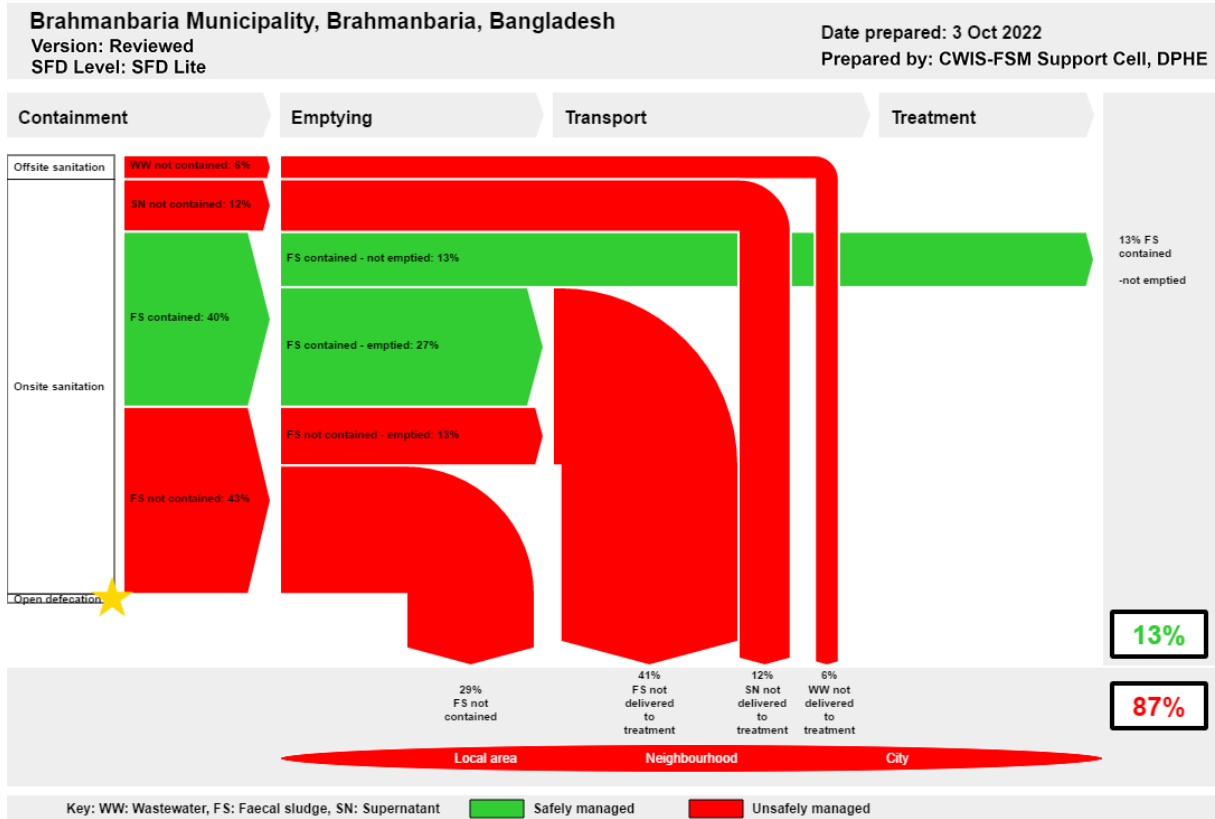


Figure 1: SFD Graphic for Brahmanbaria Municipality.

2 SFD Lite information

Produced by:

- Dr. Abdullah Al-Muyeed, Chief Operating Officer, CWIS-FSM Support Cell, Shishir Kumar Biswas, Project Director, 'Feasibility for Implementing of Solid Waste and Faecal Sludge Management System in 53 District Level Municipalities and 8 City Corporations', Department of Public Health Engineering (DPHE) and Md. Tawhidur Rahaman, Technical Expert, CWIS-FSM Support Cell, Department of Public Health Engineering (DPHE), Bangladesh.

Collaborating partners:

- DevCon, Tiller and Brahmanbaria municipality played vital roles in collecting and sharing data, and producing this SFD graphic and SFD lite report.

Date of production: 03/10/2022

3 General city information

Brahmanbaria is a fast-growing city located along the Dhaka-Chittagong highway and 110 km Eastern of Dhaka. It is beside the Titas Rive rand well connected with road, water, and railways. It is one of the oldest towns in the sub-continent and was declared Municipality in 1868. Brahmanbaria is one of the 53 district level municipalities in the country (Figure 2).

Table 1: City profile (Source: KII with the Secretary, Brahmanbaria Municipality).

Population parameters	
Estimated population, 2020	257,886
Households, 2020	46982
Area, sq.km	17.60
Total roads, km	128.63
Total drains, km	84.48



Figure 2: Brahmanbaria Municipality Location Map (BBS/ GIS report 2017).

According to the population census in 2011 by the Bangladesh Bureau of Statistics (BBS), the Brahmanbaria municipality population was 172,017. The urban population growth in Brahmanbaria is 3.5% per year. Considering 10% floating population, such as farmers and traders, comes to the city every day, the present (2020) population is estimated to be around 257,886 (Table 1).

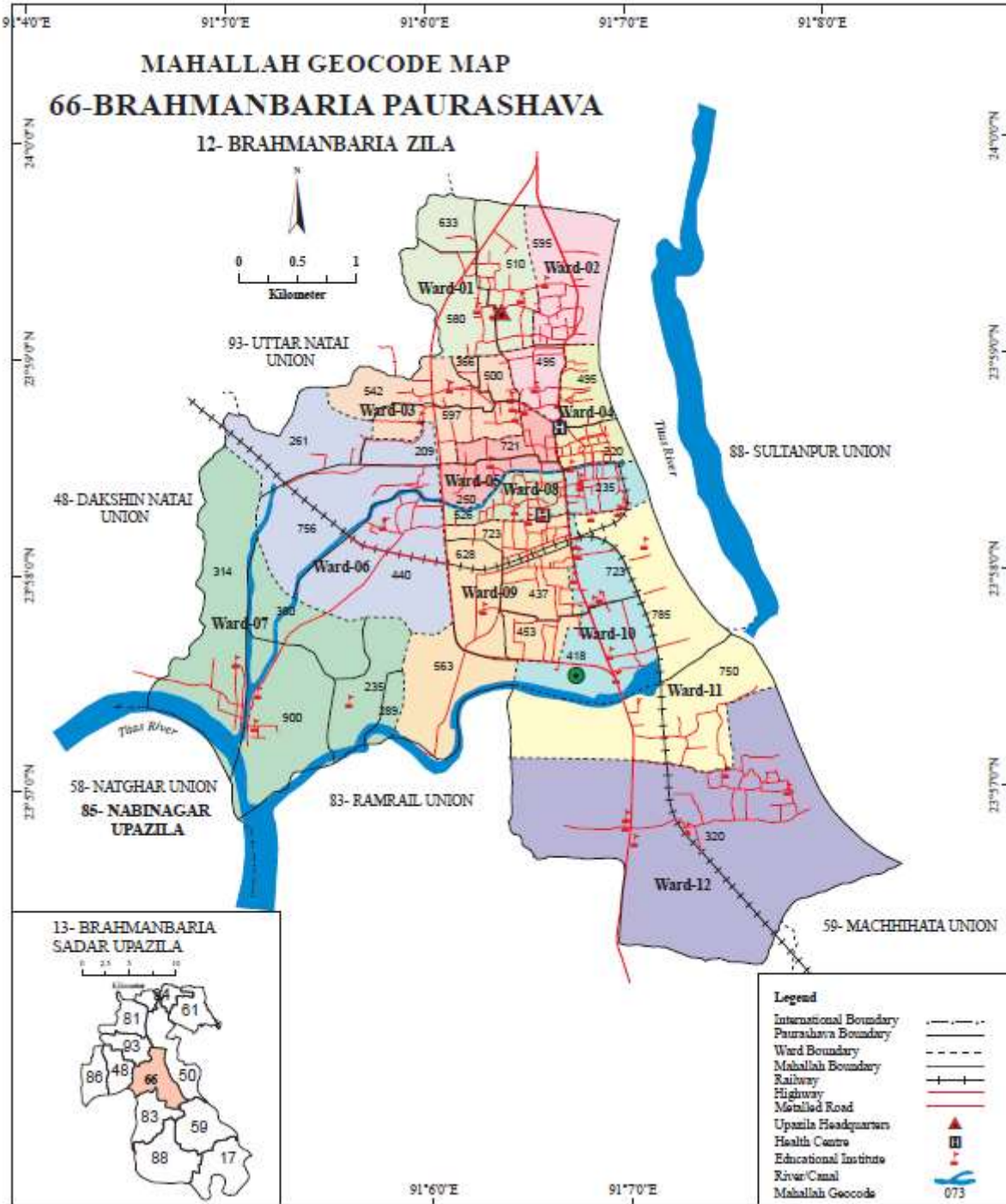


Figure 3: Brahmanbaria Municipality Ward Boundary Map (BBS/ GIS report 2017).

The municipality covers an area of 17.60 square kilometres. At present Brahmanbaria municipality has 128.63km of road network and 84.48 km of drain network¹. The geographical coordinates of Brahmanbaria are 23°57'41.67" N , 91°6'23.5" E². In the context of Bangladesh, the municipality area lies in the earthquake Zone 2 according to the seismic map of Bangladesh³ (Figure 3).

According to the Bangladesh Meteorological Department (1981-2017)⁴, the city area and surrounding area are experiencing a tropical monsoon climate. It is characterized by warm, humid summers and

¹ Source: 'At a Glance: Brahmanbaria Municipality', by municipal office

² <https://www.latlong.net/place/Brahmanbaria-bangladesh-13499.html>

³ *The seismic map of Bangladesh (Geological Survey of Bangladesh, 1978) divides the country in three zones. Zone 1 (Northwest) with seismic coefficient 0.08 g, Zone 2 (middle) seismic coefficient 0.05 g and Zone 3 (Southwest) with Seismic coefficient 0.04 g.*

⁴ <http://bmd.gov.bd/p/Rainfall-Situation-202>

cool, and dry winters. There is no climatological station within the municipality. The closest meteorological station of Bangladesh Meteorological Department (BMD) is located in Cumilla. Weather data from this station are collected from 1981 to 2017. About 90% of the total annual rainfall occurs in the period from May through October and the driest months of the years are November to March. The maximum mean temperature observed is 30.9 - 32.2°C between May-August, with the minimum temperatures are found between 12.1-13.3°C in January. The annual average rainfall is about 2,066 mm, according to BMD (1981-2017).

The municipality is surrounded by Titas River. Kurulia *Khal* flow through the municipality. According to the flood zoning map of Bangladesh, the municipality is in a flood-free zone (in the last 12 years no flooding event happened) but the municipality is situated in riverbank erosion prone area. However, the drainage network of the city is not adequate. Every year, municipality areas face water logging during monsoon for drainage congestion. There are some secondary drains carrying stormwater and domestic wastewater to the outfalls the rivers and canals.

The population density is high in the north-east, with more than 20,000 per sq. km. The Central Business District (CBD) is located there together with large markets, shopping centres, and high raised buildings for commercial and residential purposes. The population density in the west and south is lower, ranging from 3,500-5,000 per sq km⁵.

⁵KII and field visit during Baseline survey 2020

4 Service outcomes

Brahmanbaria Municipality, Brahmanbaria, Bangladesh, 3 Oct 2022. SFD Level: SFD Lite								
Population: 257886								
Proportion of tanks: septic tanks: 68%, fully lined tanks: 0%, lined, open bottom tanks: 100%								
Containment								
System type	Population	WW transport	WW treatment	FS emptying	FS transport	FS treatment	SN transport	SN treatment
	Pop	W4c	W5c	F3	F4	F5	S4e	S5e
System label and description	Proportion of population using this type of system (p)	Proportion of wastewater in open sewer or storm drain system, which is delivered to treatment plants	Proportion of wastewater delivered to treatment plants, which is treated	Proportion of this type of system from which faecal sludge is emptied	Proportion of faecal sludge emptied, which is delivered to treatment plants	Proportion of faecal sludge delivered to treatment plants, which is treated	Proportion of supernatant in open drain or storm sewer system, which is delivered to treatment plants	Proportion of supernatant in open drain or storm sewer system that is delivered to treatment plants, which is treated
T1A1C6 Toilet discharges directly to open drain or storm sewer	5.5	0.0	0.0					
T1A2C5 Septic tank connected to soak pit	3.8			40.0	0.0	0.0		
T1A2C6 Septic tank connected to open drain or storm sewer	37.3			36.0	0.0	0.0	0.0	0.0
T1A2C7 Septic tank connected to open water body	9.3			36.0	0.0	0.0		
T1A2C8 Septic tank connected to open ground	1.5			36.0	0.0	0.0		
T1A2C9 Septic tank connected to 'don't know where'	6.5			36.0	0.0	0.0		
T1A4C10 Lined tank with impermeable walls and open bottom, no outlet or overflow	2.8			45.0	0.0	0.0		
T1A5C10 Lined pit with semi-permeable walls and open bottom, no outlet or overflow	33.3			75.0	0.0	0.0		

Table 2: SFD Matrix for Brahmanbaria Municipality.

The outcome of the SFD graphic shows that only thirteen percent (13%) of the excreta flow is classified as safely managed, and the remaining eighty eight percent (88%) is classified as unsafely managed (Figure 1). The unsafely managed excreta originate from wastewater not delivered to treatment (6%), Faecal Sludge (FS) both contained and not contained - not delivered to treatment (41%), FS not contained - not emptied (29%) and 12% of supernatant not delivered to treatment. Thus, the safely managed excreta originate from FS contained - not emptied (13%).

The percentages presented in Table 2 and discussed in the next section are based on data collected through household (HH) surveys, Key Informant Interviews (KIIs) and Focus Group Discussions (FGDs) (Figure 4).

Overview on technologies and methods used for different sanitation systems through the sanitation service chain is as follows:

4.1 Offsite Systems

The city does not have a dedicated sewerage system. However, during field observation and HH survey, it was found that there is a certain area where toilets are directly connected to open drains or storm sewer. Similarly, a portion of septic tanks is directly connected to open drains or storm sewer. Therefore, T1A1C6 system is considered as 5.5% of the total population of the city to generate the SFD graphic. Similarly, the T1A2C6 system is considered 37.3% of the total population of the city to generate the SFD graphic. In the absence of a sewerage system, the wastewater in T1A2C6 and the supernatant in T1A2C6 are directly discharged into the river or the environment untreated.

4.2 On-site Sanitation Systems



Figure 4: Household survey and consultations. Left: Household survey. Right: Consultation meeting
(Source: Feasibility study 2020-21/DPHE).

Containment: Almost all the households (96%) in the city have their latrine which is connected to single pits, twin pits, septic tanks, or discharged directly into the environment (e.g., open-drain or storm sewer). The rest of the households use community latrines (3.7%) and neighbour's toilet (0.2%). From the household survey, it was found that 58.4% of the city population uses septic tanks as the containment system, 33.3% of the toilets have single pit systems, and 2.8% of people use double pits in the city. About 5.5% do not have any type of containment and discharges directly to the environment (KII, FGDs, HH survey, 2020).

According to the type of connectivity and features of containment technologies, the discharging points of the toilets are categorized as: 3.8% of the population uses septic tanks connected to soak pits (T1A2C5), 37.3% of the population uses septic tanks connected to open drain (T1A2C6), 9.3% of the population uses septic tanks connected to water bodies (T1A2C7), 1.5% of the population uses septic tanks connected to open ground (T1A2C8), 6.5% of the population uses septic tanks connected to 'don't know where' (T1A2C9), 2.8% of the population uses lined tanks with impermeable walls and open bottom no outlet or overflow (T1A4C10) and 33.3% of the population relies on lined pits with semi-permeable walls and open bottom with no outlet or overflow (T1A5C10) (KII, FGDs, HH survey, 2020). Thus, at the containment stage, the city's excreta of only 40% of the population are contained. Figure 6 shows pictures of these technologies in operation.

Groundwater Pollution: The depth to groundwater in the city ranges from 5-8 m. Various drinking water sources are used in the city. Among them, 52% use tube wells fitted with electric motor, 41% use their own hand pump tube well, 4% of people use supply water and 3% depends on other sources. Lateral separation between sanitation facilities and water sources varies from one area to another. Tube wells of different sizes and depths are generally used to pump water from the subsurface confined aquifers (Figure 5).

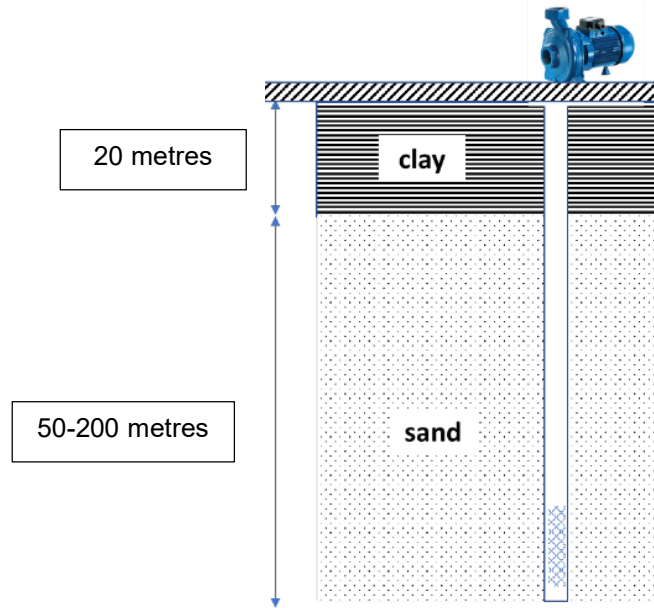


Figure 5. Soil profile in Brahmanbaria district and location of tube well screen.

During the household visit and FGDs, it was found that less than 25% of sanitation facilities are located within 10 metres from the groundwater source. Besides, due to the geographical situation, sanitation facilities are not located uphill of the groundwater sources. According to a survey report on ‘Hydrogeological screening, slug test and geophysical logging on observation well units’, conducted by the Department of Public Health Engineering (DPHE) on March 2017, drinking water is collected from the confined aquifer (25m – 200m) through pumps. Hence, considering all these factors, it is considered that there is not any significant risk of groundwater contamination in the city. Therefore, a low risk of groundwater contamination is considered in the city.

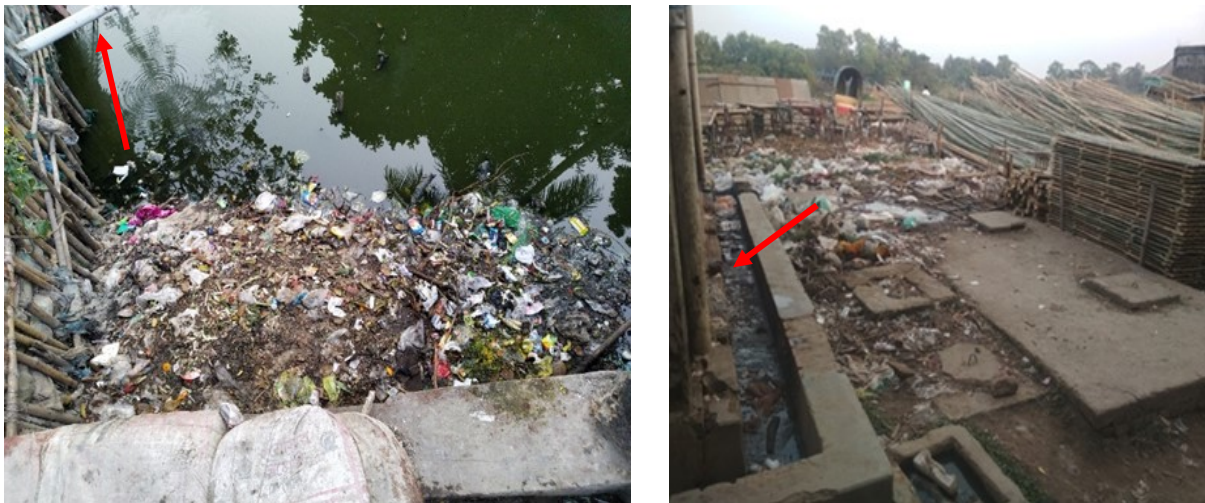


Figure 6 : Containment technologies and their connections in Brahmanbaria
Left: Toilet Pit open to a nearby water body, Right: Toilet pipe connected to open environment
 (Source: Feasibility study 2020-21/DPHE).

Emptying: Households relying on septic tanks have to arrange themselves for emptying of the septic tank. It was observed from the baseline survey that most of the septic tanks have been constructed in the last 2-5 years. According to the survey from 2020, the frequency of emptying of septic tanks or covered pits varies from 1 to 10 years depending upon the size, uses, etc.

However, about 40% of the septic tanks, connected to the soak pit are emptied within 2-5 years. About 36% of the septic tanks connected to open drains, open ground or water bodies are emptied within 4-5 years. Almost 75% of single pit latrines are emptied within 1-2 years. Besides the above information, it was also revealed during the discussion in FGDs and household visits that the demand for desludging septic tanks would increase shortly. Desludging of the septic tanks or pit is mostly (75%) done by private sweepers. Only in a few households, desludging is done by municipal sweepers (11%) or family members (14%). Around 61% of this withdrawal is done manually using a bucket and rope. This method highly risks the health and safety of the workers. A substantial number (39%) use electric pumps, these reflecting the use of the higher level of technologies by some of the workers. Manual emptying is the common practice in this city.

Transportation: The sludge withdrawn from the septic tanks and pit latrines by the cleaners is disposed of in various places. Based on the survey from 2020, it was observed that about 39.9% of the respondents who use any kind of containment system informed that faecal sludge (sludge from the septic tanks or covered pit latrines) is disposed of in a dug hole covered with soil away from the house. Besides, 60.1% of the faecal sludge is disposed of in the open environment like a drain, open ground, water bodies and 'don't know where'.

Treatment/Disposal: There is no faecal sludge treatment plant in Brahmanbaria.

4.3 Open Defecation:

From HH surveys, KIIs and FGDs, it was found that 100% of citizens use some kind of toilet in the municipality. Thus, from the sanitation point of view, the town is considered an open defecation-free town.

5 Data and assumptions

The baseline survey conducted in September 2020 contains detailed data on different stages of the sanitation value chain. The SFD matrix is generated from these data, collected during sample household surveys, along with informal interviews, open-ended consultations, key informant interviews and focus group discussions with the municipality officials, town level coordination committee, households, social workers, business persons, pit emptiers and the citizens including women in all the wards of the municipality. The SFD matrix was generated from these data. Finally, data from all these sources were triangulated to produce the SFD matrix, the SFD graphic and the SFD lite report.

The last census was carried out about 10 years ago. So, the actual population, household, and sanitation data are not updated yet. Most of the households with septic tanks do not know the actual type, size, and design desludging periods. Also, a large number of pit users are unaware of the emptying events and frequency of their pits or not. Due to all these data gaps, some assumptions have been made to produce the SFD graphic. These assumptions were shared with key informants at the municipality and accepted by them.

Following assumptions were made for developing the SFD graphic for Brahmanbaria municipality:

- ✓ The proportion of FS in septic tanks, fully lined tanks, and lined, open bottom tanks are considered 68%, 0%, and 100% respectively as per the guidance given in the Frequently Asked Questions (FAQs) in the Sustainable Sanitation Alliance (SuSanA) website.
- ✓ According to the population census in 2011 by the Bangladesh Bureau of Statistics (BBS), the population of Brahmanbaria Municipality was 172,017. The urban population growth in Brahmanbaria is 3.5% per year. Considering 10% floating population, such as farmers and traders, comes to the city every day, the present (2020) population is estimated to be around 257,886.
- ✓ There are around 2.8% of twin pit latrines in the containment system. So, it is assumed that all these twin pit containment technologies are defined as a lined tank with impermeable walls and open bottom (system T1A4C10, 2.8%). Based on the household survey, variable F3 for system T1A4C10 is set to 45%.
- ✓ There are around 33.3% of single pit latrines in the containment systems. So, it is assumed that all these single pit containment technologies are defined as lined pits with semi-permeable walls and open bottom, no outlet or overflow, where there is no 'significant risk' of groundwater pollution (system T1A5C10, 33.3%). Most of the single pit latrines are found to be emptied within 1-2 years. Based on the household survey, variable F3 for system T1A5C10 was set to 75%.
- ✓ 3.8% of septic tanks are connected to soak pits (system T1A2C5). They are well-constructed as per the field visit observation. The risk of groundwater contamination was deemed low, therefore that option was selected in the SFD Matrix.
- ✓ Around 40% of HHs have emptied their septic tank with a soak pit with a desludging frequency of 2-5 years. Based on the household survey, variable F3 for system T1A2C5 is set to 40%.
- ✓ There are 54.6% of septic tanks connected to the open drain, water bodies, open ground and 'don't know where which are emptied within 2-5 years. Based on the household survey, variable F3 for systems T1A2C6, T1A2C7, T1A2C8 and T1A2C9 are set to 36%.
- ✓ Wastewater in T1A1C6 and supernatant in T1A2C6 are directly discharged into the river or the environment untreated. Therefore, variables W4c, W5c, S4e and S5e were set to 0%.
- ✓ Since there are no wastewater or faecal sludge treatment facilities in the town and all the collected FS is disposed untreated into the environment, variables F4 and F5 for all systems are considered to be 0%.

6 List of Sources

Reports, literature and website

- Bangladesh Bureau of Statistics (BBS), 2011.
- Population and Housing Census, 2011.
- Baseline Survey of the project “Feasibility for Implementing of Solid Waste and Faecal Sludge Management System in 53 District Level Municipalities and 8 City Corporations”, Department of Public Health Engineering (DPHE), Dhaka, Bangladesh (December 2020).
- Report on ‘Hydrogeological Screening, Slug Test and Geophysical Logging on Observation Well Units’ under *Bangladesh Rural Water Supply and Sanitation Project (BRWSSP)*, Arsenic Management Division, Department of Public Health Engineering (DPHE) (March 2017)
- The revised ‘National Strategy for Water Supply and Sanitation, 2021’
- ‘At a Glance: Brahmanbaria Municipality’, by municipal office.
- <https://www.gps-latitude-longitude.com/gps-coordinateshttp://bmd.gov.bd/p/Rainfall-Situation-202>

Key Informant Interviews (KIIs) (September 2020 to December 2020)

- KII with Mayor, Brahmanbaria Municipality.
- KII with Conservancy Inspector, Brahmanbaria Municipality.
- KII with Sanitary inspector, Brahmanbaria Municipality.
- KII with Engineer, Brahmanbaria Municipality.
- Facilitators: Md. Mynul Islam Hemel, Field Coordinator, Tiller.



Figure 7: KIIs with different stakeholders in Brahmanbaria. (Source: *Feasibility study 2020-21/DPHE*).

Focus Group Discussions (FGDs) (September 2020 to December 2021)

- FSM Sweepers and Service Providers.
- First Stage Solid Waste Collector.
- Slum Dwellers.



Figure 8 : Focus Group Discussions in Brahmanbaria. (Source: *Feasibility study 2020-21/DPHE*).

Additional information

- This report was compiled as part of the Baseline Survey of the project, ***“Feasibility for Implementing of Solid Waste and Faecal Sludge Management System in 53 District Level Municipalities and 8 City Corporations”***, (December 2020).
- The project was implemented under the supervision of the Department of Public Health Engineering (DPHE). In-depth information and data were collected for the towns which included project documents, master plans and baseline reports from the municipality and national levels, statistical data like population and household income expenditure, GIS data and other geospatial data and satellite images, and open street maps (OSM). The Field Survey of the project was conducted from 01 January 2020 to 24 March 2020 and from 04 July 2020 to 30 November 2020. The field survey includes household surveys, key informant interviews, focus group discussions, and physical feature surveys. A central server has been established to monitor FSM and SWM databases under the project. The results of the study are shared with the municipal authority and are considered as a basis for preparing investment projects by the government and development partners, and sustainable plans for operating and maintaining the systems by the municipal authorities.
- We would like to thank Ms. Nayar Kabir, Mayor, Brahmanbaria Municipality, Mr. Z M Anwar Executive Engineer, Brahmanbaria Municipality; Mr. Mukhlechur Rahman, Slum Development Officer, Mr. Ishaq Bhuyan, Secretary, Brahmanbaria Municipality for providing all the required primary and secondary data and cooperating for Key Informant Interviews (KIIs) & Focused Group Discussions (FGDs). This report would not have been possible to produce without the constant support of Ms. Nayar Kabir, Mayor, Brahmanbaria Municipality, who helped in conducting sample surveys and FGDs in the field.
- We also acknowledge the support of the Centre for Science and Environment, India for the promotion of SFD in Bangladesh.

Brahmanbaria Municipality, Bangladesh,
2022

Produced by:

Dr. Abdullah Al-Muyeed, Chief Operating
Officer, CWIS-FSM Support Cell

Shishir Kumar Biswas, Project Director,
Feasibility for Implementing of Solid Waste
and Faecal Sludge Management System in
53 District Level Municipalities and 8 City
Corporations, Department of Public Health
Engineering (DPHE)

Md. Tawhidur Rahaman, Technical Expert,
CWIS-FSM Support Cell

Department of Public Health Engineering
(DPHE), Bangladesh

© Copyright

All SFD Promotion Initiative materials are freely available following the open-source concept for capacity development and non-profit use, so long as proper acknowledgement of the source is made when used. Users should always give credit in citations to the original author, source and copyright holder.

This SFD lite report is available from:

www.sfd.susana.org

SFD Promotion Initiative

