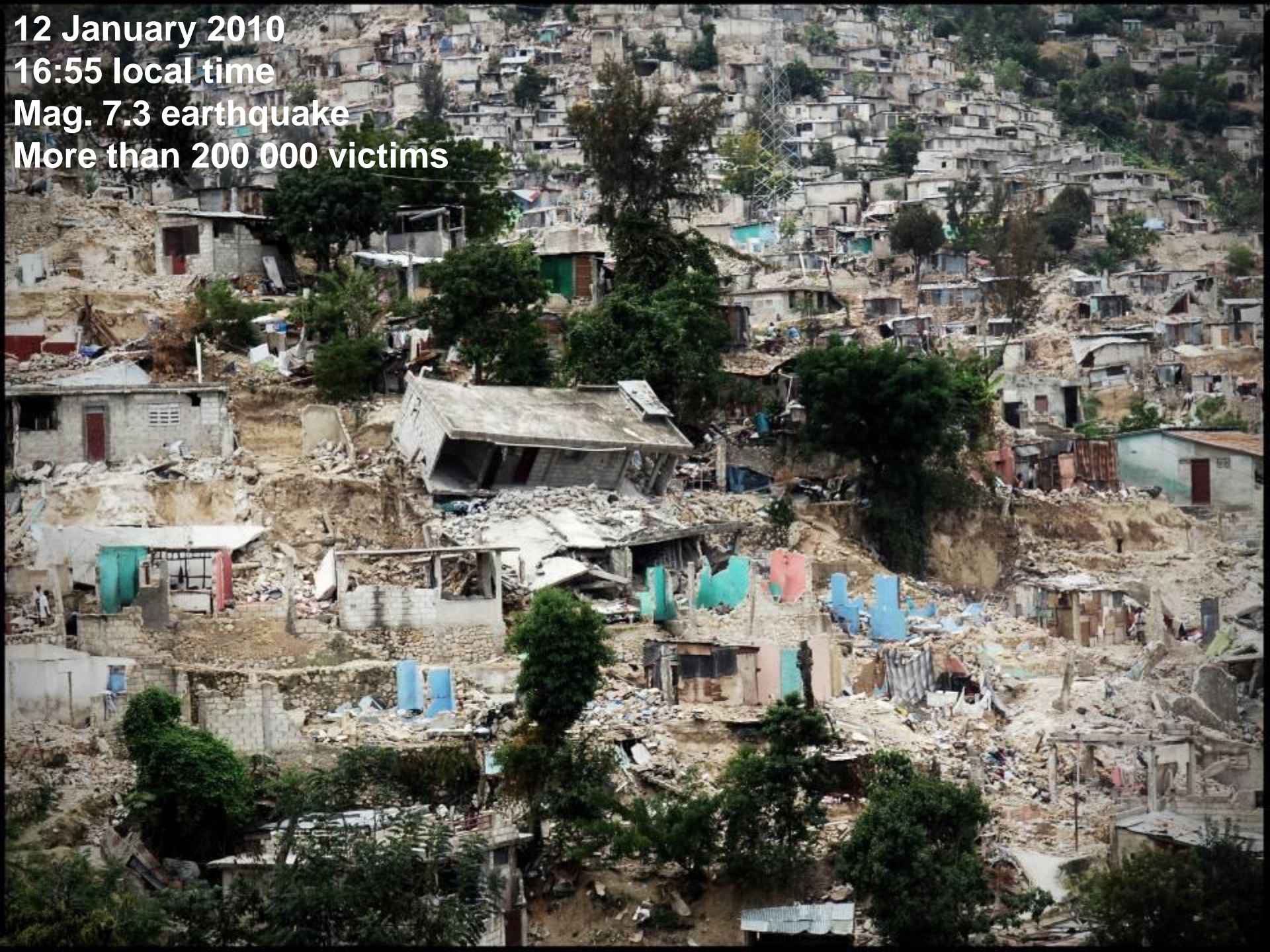




Emergency WASH reponse
Earthquake in Port au Prince, 2010:

Is the “Portaloo” solution
replicable?

12 January 2010
16:55 local time
Mag. 7.3 earthquake
More than 200 000 victims



The day after :
Evaluation
of the water network
and needs assessment



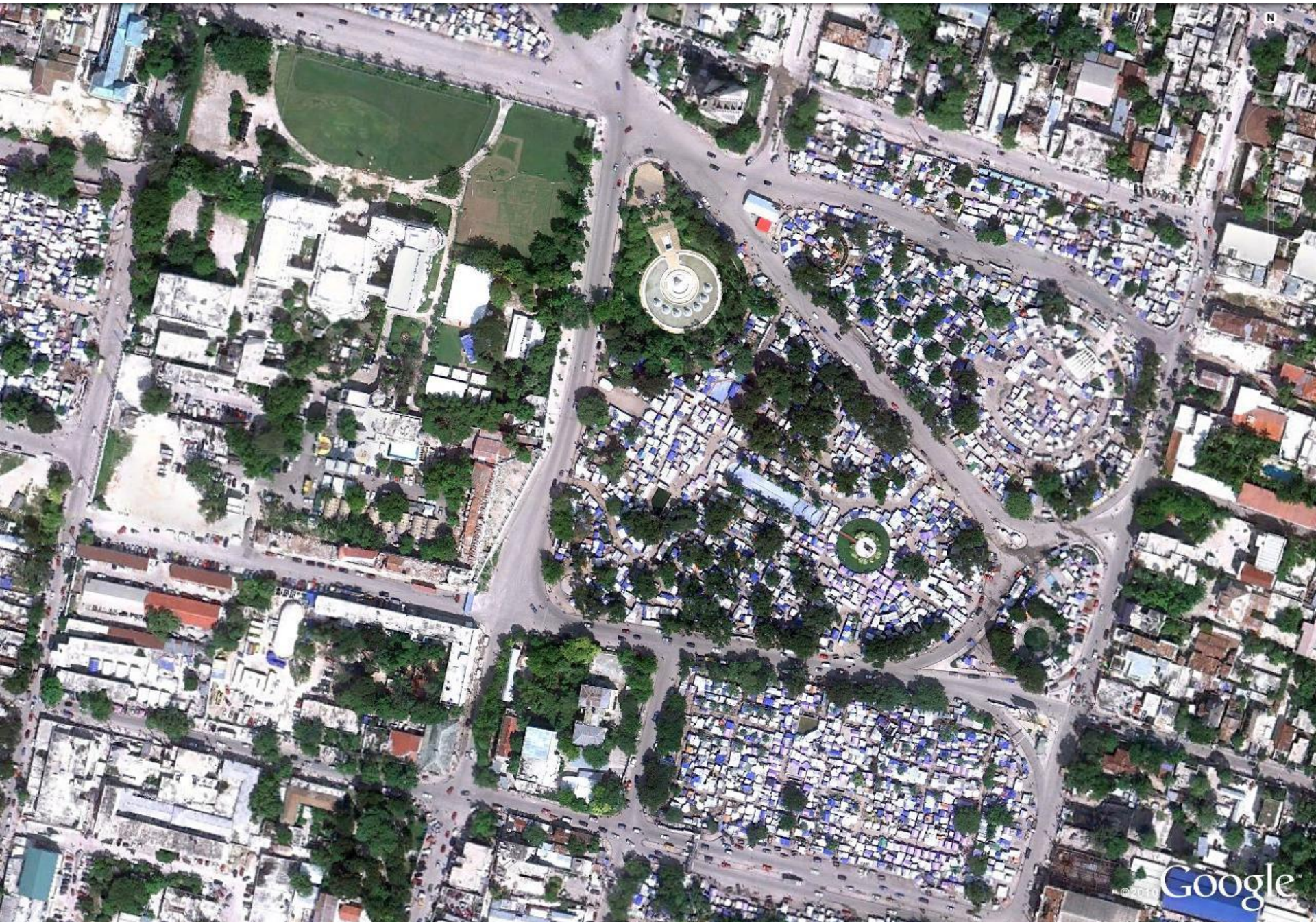
First Evaluation - Conclusion

- **Water:** Bore holes still functioning, raw water of « good » quality in quantity... Taps are destroyed and peoples displaced => Water trucking and chlorination
- **Sanitation** and Hygiene Promotion will be the real challenge to avoid disease outbreak: Many refugees + high density => we must move quick and efficiently
- The answer must be coordinated (WASH cluster and DINEPA)



**Coordination:
WASH cluster meeting in the field
and close work with the Government
(DINEPA)**

Pa foullé la: the impossibility of digging



The Portable Solution

200 litres tank
Max. users per day = 50



3D Exploded view

• Ultra smooth walls can be washed easily with built-in, irremovable air vents to protect the cabin from insects and rain.

• Highly stable door with easy wash moulding.

• Functional waste collection tank with ergonomic seat and anti-contact bends.

• Single block floor highly resistant to impact, with non-slip surface and raised rims preventing accumulation of dirt and facilitating the washing and disinfecting operations.



**Portable Toilet, hand washing
and attendant**



**First kits installed one month
after the earthquake**

The desludging
(vacuum tanker truck)
+ one ACF staff / truck



**Final destination:
Truitier, nearby Cité Soleil the first days + composting site of the
Company (banana field)**





Latrine building where possible to dig

KK-Nag Magic slab



Latrines + hand washing with soap

Cleaning and maintenance is done by a local attendee. Toilet paper is distributed.

An Evaluation of the Action Against Hunger (ACF) Post Earthquake Emergency Response in Haiti, 2010.



Baby Tent - Petite Savanne encampment, Port au Prince

Final Report - Extract

Author:
Jeff Duncalf, External Consultant,
December 2010

Evaluation externe de la réponse d'Action contre la Faim en Eau, Assainissement et Hygiène à l'urgence post-séisme du 12/01/2010 en Haïti

Période couverte : 12 janvier 2010 – 31 décembre 2010

Julie Patinet



Décembre 2010

Pro	Con
<p>Ready to use, quick to deploy - one flat bed truck can install up to 100 toilets per day.</p> <p>Very good in terms of acceptance and dignity as well as containment.</p> <p>If service is done no smell, no flies...</p> <p>Can be moved easily if needed.</p> <p>Among the best solution in urban context and fast installation.</p> <p>Cubicle for wheel chairs available</p>	<p>The price - it must be rent with the service. From 25 usd / day down to 9 depending on quantity and duration.</p> <p>Cannot be stored in an emergency stock .</p> <p>Problems with users who put stones, clothes or objects in the tank.</p> <p>Solution impossible if there is no secured dumping site nearby.</p> <p>The cubicle can burn easily.</p> <p>Duration should not exceed 6 months.</p>

Pro	Con
<p>There was no other solution in central Port au Prince.</p> <p>Coordinated answer (Cluster + UNICEF + Donors + DINEPA...).</p> <p>Solution fit the local culture and very well accepted (was already existing in the country before).</p> <p>The final destination was not perfect but acceptable.</p>	<p>The price was high but negotiated (from 20 usd to less than 9).</p> <p>Took a long time to arrive in the country due to high number needed.</p> <p>Exit strategy - lack of visibility regarding the future of the camps.</p>

Conclusion: Is it replicable?

Yes! It's a ready to use « one size fits all solution »	No! It was OK in Port au Prince but can't be used in other emergencies
It was already used in emergencies (earthquake in Italy...) in developed countries because it is quick to install and user's friendly	It is a solution for developed countries
It's a good short term emergency solution	It's very expensive
Perfect in terms of dignity and safety for the users	It's impossible to stock
	The solution is possible only if already existing in the country or nearby

Conclusion: It is replicable for a short term period, if a treatment plant is available for safe disposal of the sludge and if the equipment is available in country.

Do not forget **monitoring** the trucks and “**hot line**” or **complain mechanism** for the users.