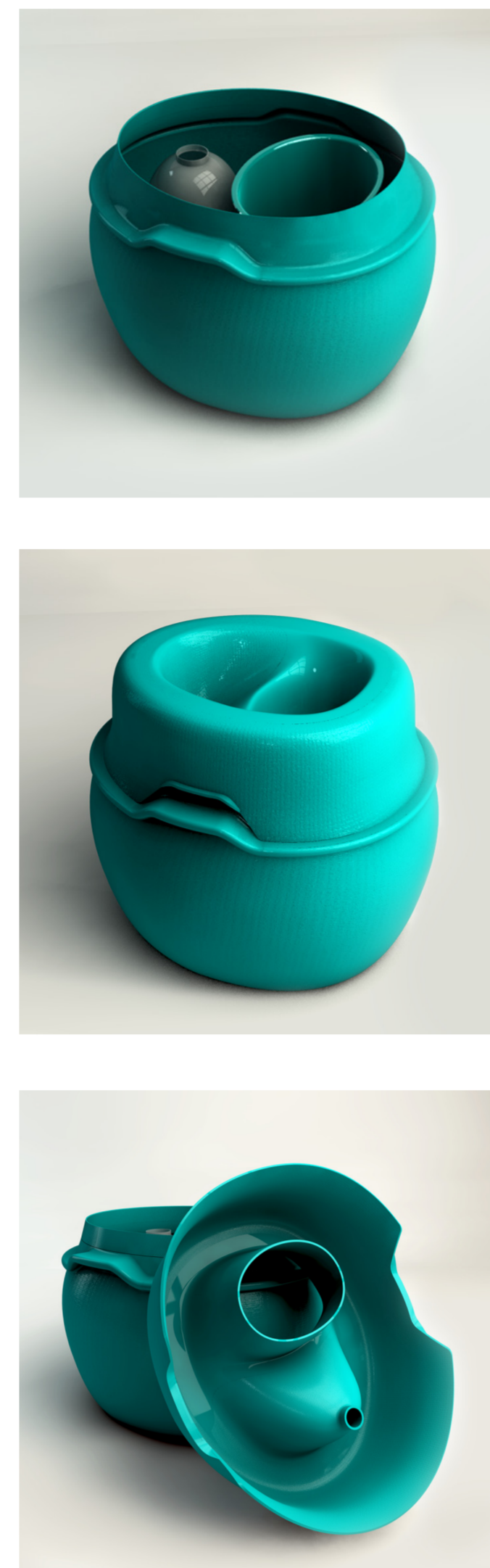


SANITATION TECHNOLOGY MEETS AESTHETIC DESIGN

mosan - a mobile dry toilet inspired by handcrafted shapes

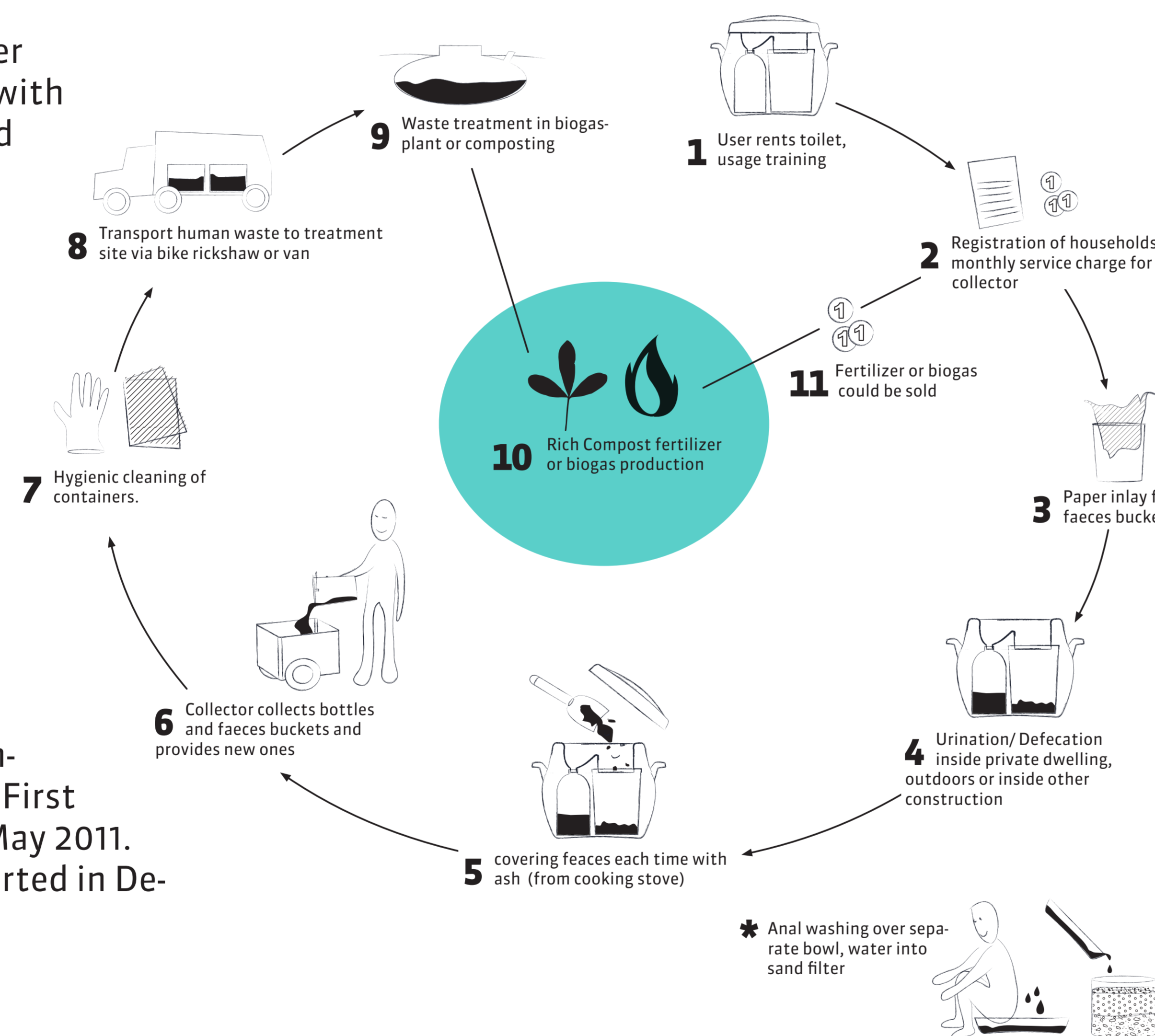


dry urine diversion toilet
 for the urban poor especially **women**
 densely populated urban areas lack space
 sitting posture **privacy**
 lightweight jute-reinforced plastic
mobile toilet
 carry and use in a **private place**
 suitable for flood prone areas
 shared by families and households upto 5 members
 inspired by handcrafted terracotta forms
 slum dwellers become proud toilet users
avoid open defecation

Separation of urine and faeces into two inner containers. Faeces are kept dry by covering with ash. A tight-fitting lid and layers of ash avoid smell. Full inner containers are emptied daily and transported off-site by collectors.

The sanitation system includes: delivery of the toilets to households, user training, daily emptying, maintenance of toilet and safe excreta management with treatment and disposal or reuse. Users rent the toilet for a low monthly fee. Compost fertiliser can be produced.

The toilet was designed by the industrial designer Mona Mijthab in cooperation with the GIZ Urban Governance Infrastructure Improvement Project in Bangladesh (UGIIP-2). First acceptance tests and survey carried out in May 2011. Production of small series of prototypes started in December 2011.



1:1 size in millimetre:
 520 width x 430 height x 460 depth
 approximately 4 kg when empty