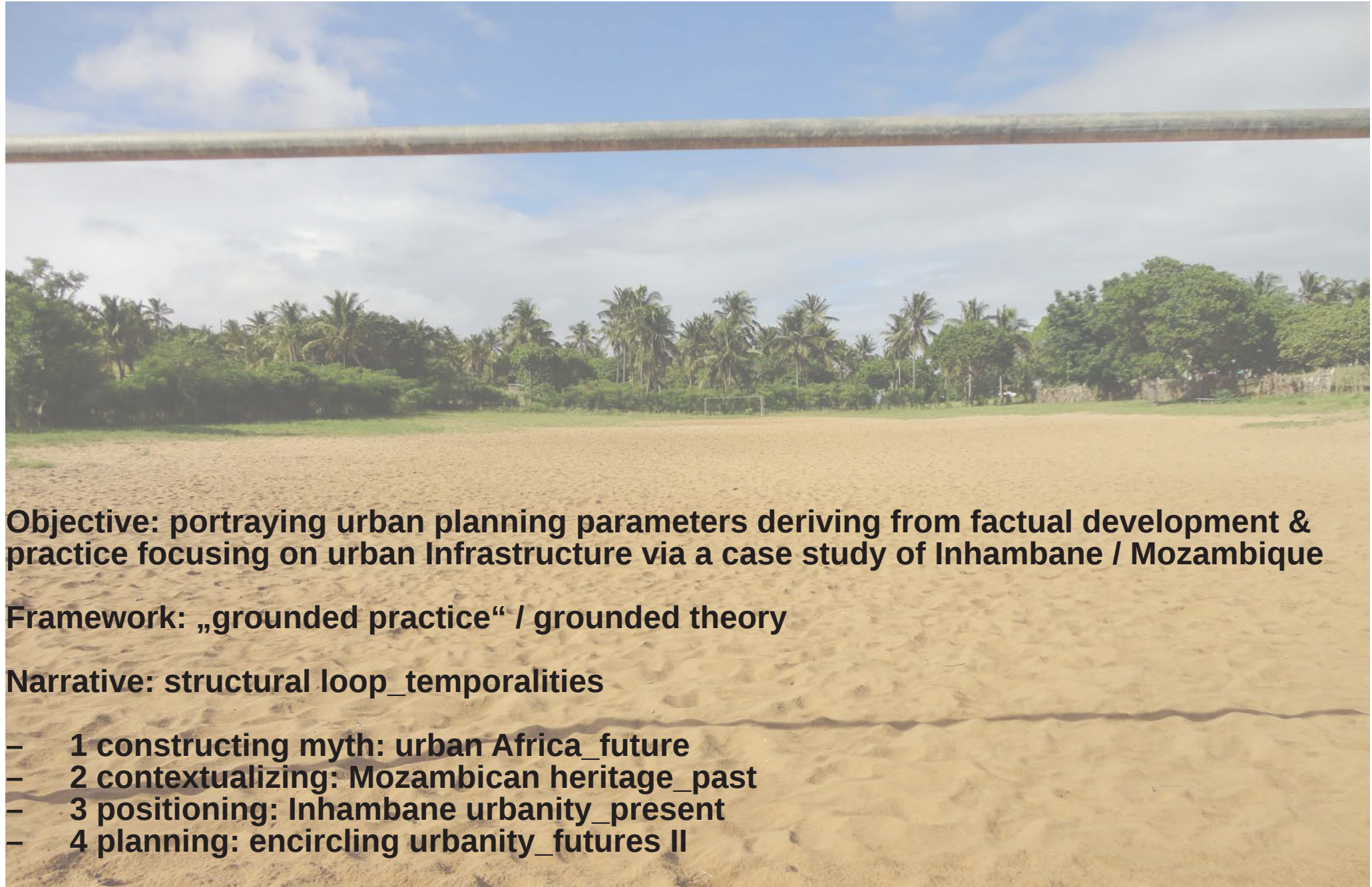


Infra-de-structuring Africa's urban revolution



Infra-de-structuring Africa's urban revolution



Objective: portraying urban planning parameters deriving from factual development & practice focusing on urban Infrastructure via a case study of Inhambane / Mozambique

Framework: „grounded practice“ / grounded theory

Narrative: structural loop_temporalities

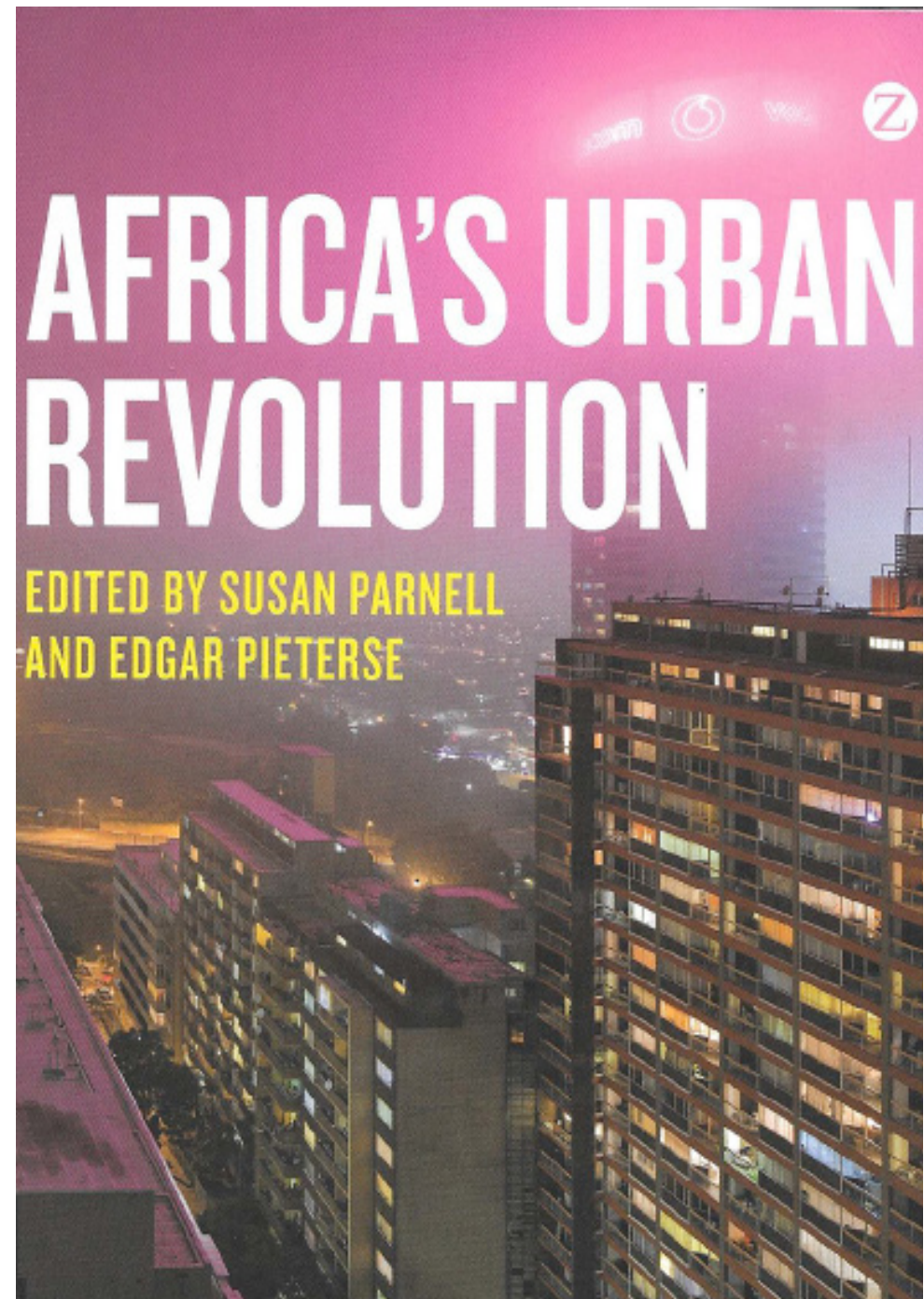
- **1 constructing myth: urban Africa_future**
- **2 contextualizing: Mozambican heritage_past**
- **3 positioning: Inhambane urbanity_present**
- **4 planning: encircling urbanity_futures II**

1 demographics / economics?

“Impacts from the rise of an urban Africa are formative locally, but will reverberate globally.” Parnell / Pieterse

“...newfound economic growth is highly skewed and at risk because of its dependence on global demand and the narrow economic base in most countries.” Pieterse

“...infrastructure will alter routes & ways of life and establish new ones. Many existing circuits of transaction are arduous, diffuse and time consuming.” Simone



1 Kigali master plan

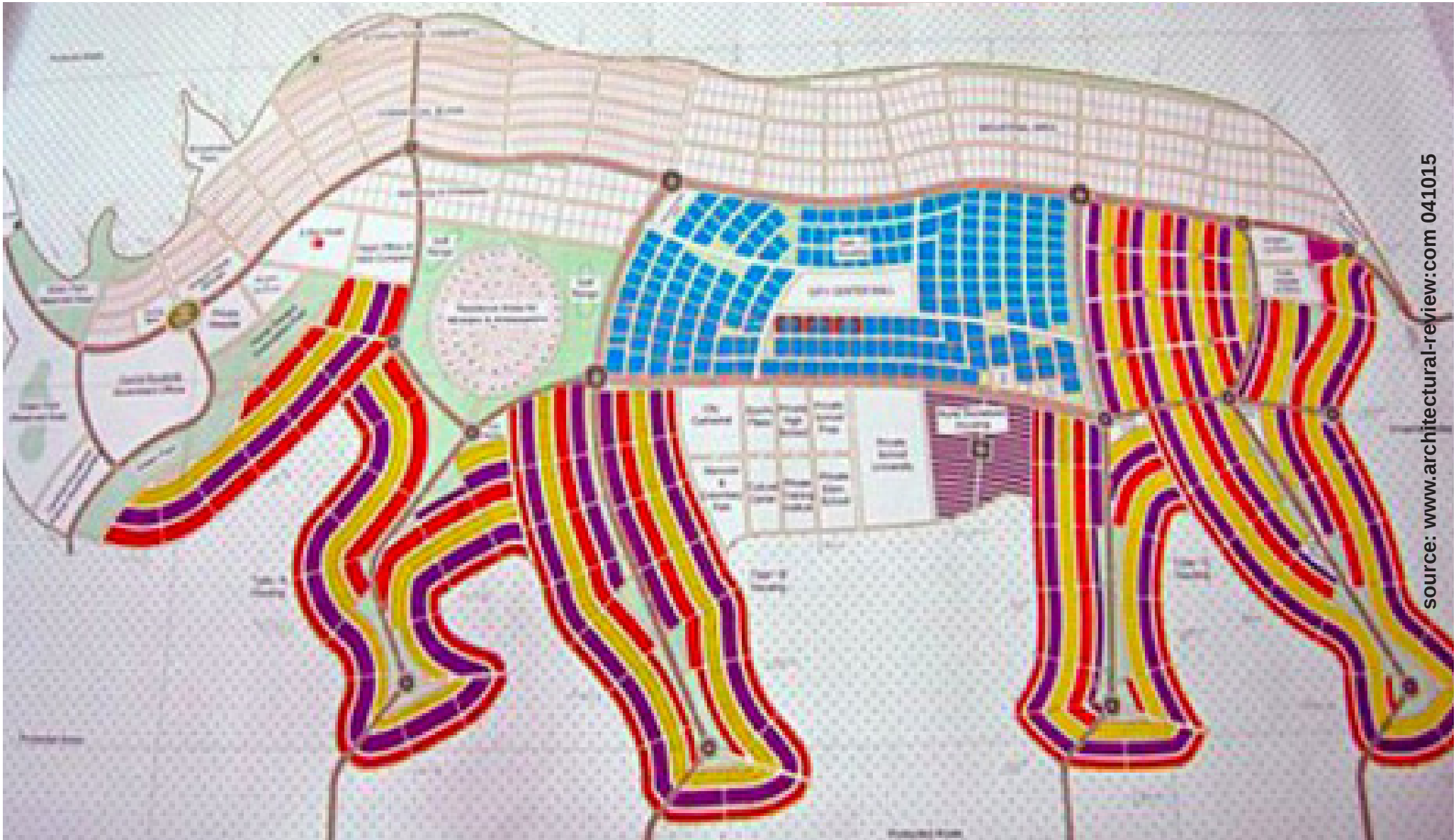


1 Cairo new capital



© the Japan Times

1 rhino shaped capital_Southern Sudan



1 normative dichotomy



© United Nations. In: Sustainable Urban Development in Africa, p.10

2 Inhambane areal view

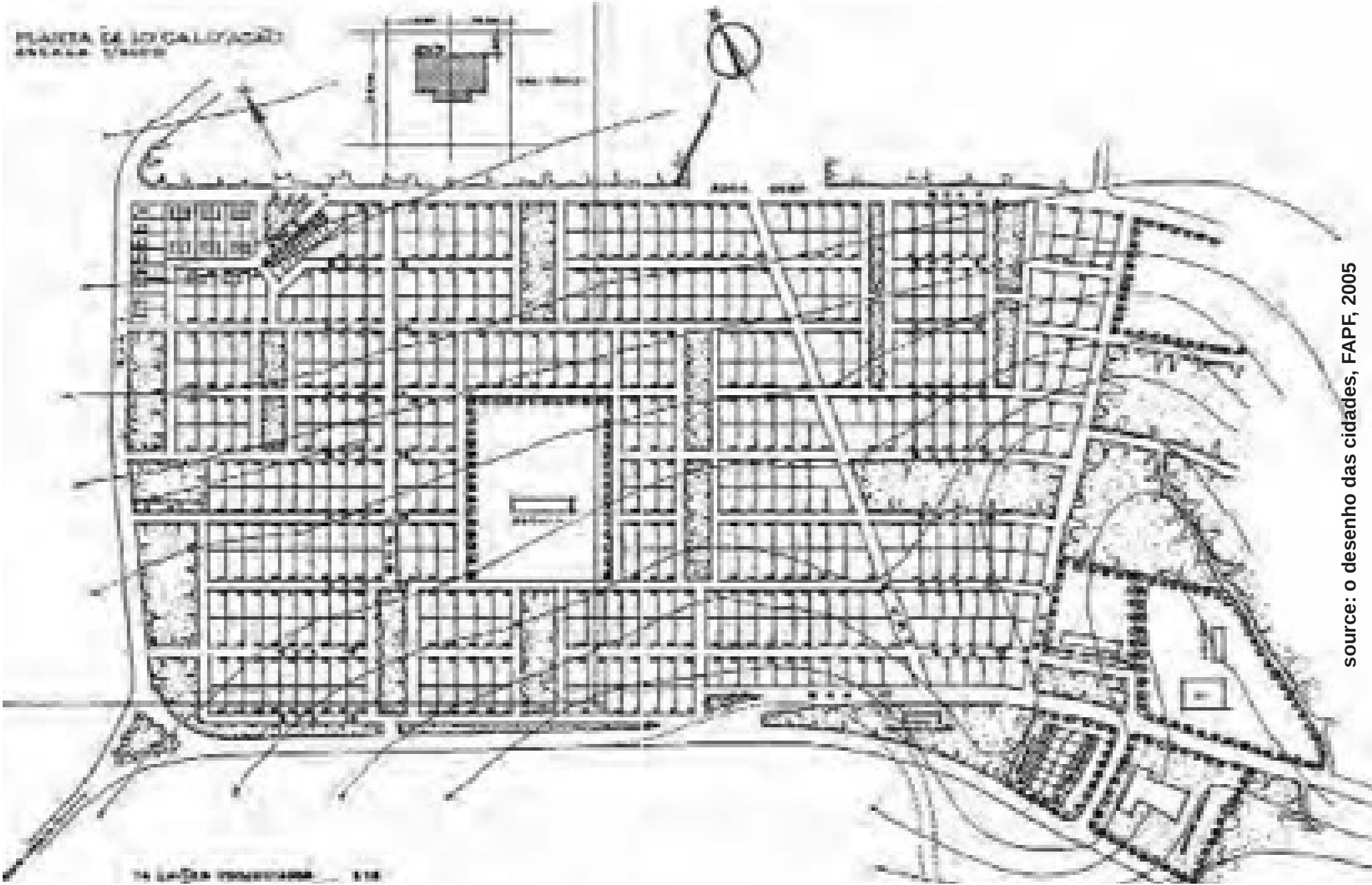


source: inhambane, Elementos de História Urbana, FAPF, 2003

2 indigenous neighborhood, 1950



2 popular neighborhood, 1968



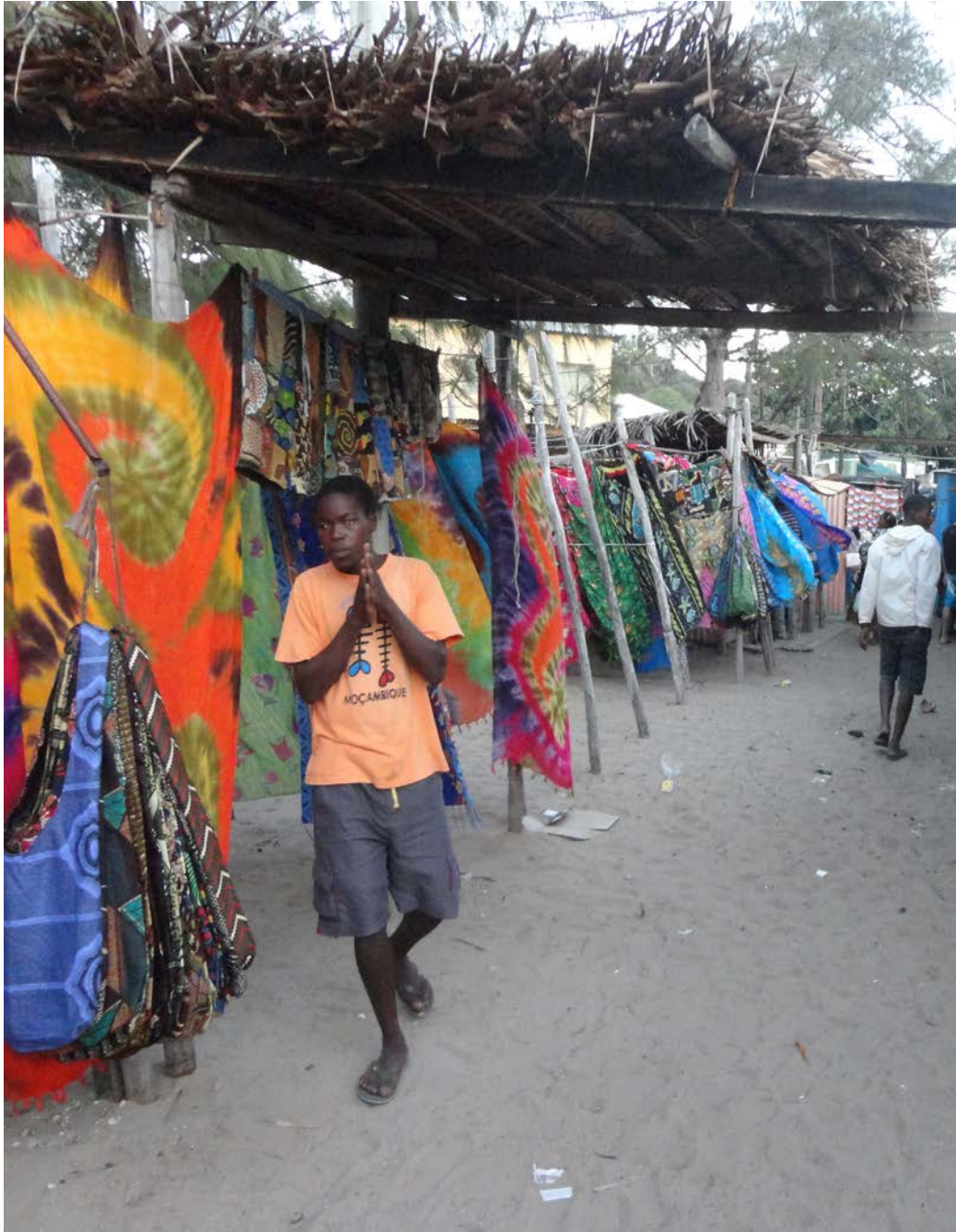
2 partial neighborhood in Maputo



3 bus terminal



3 markets



3 churches/ schools



3 family cementeries



3 latrines



3 neighborhoods



3 infrastructural hardware

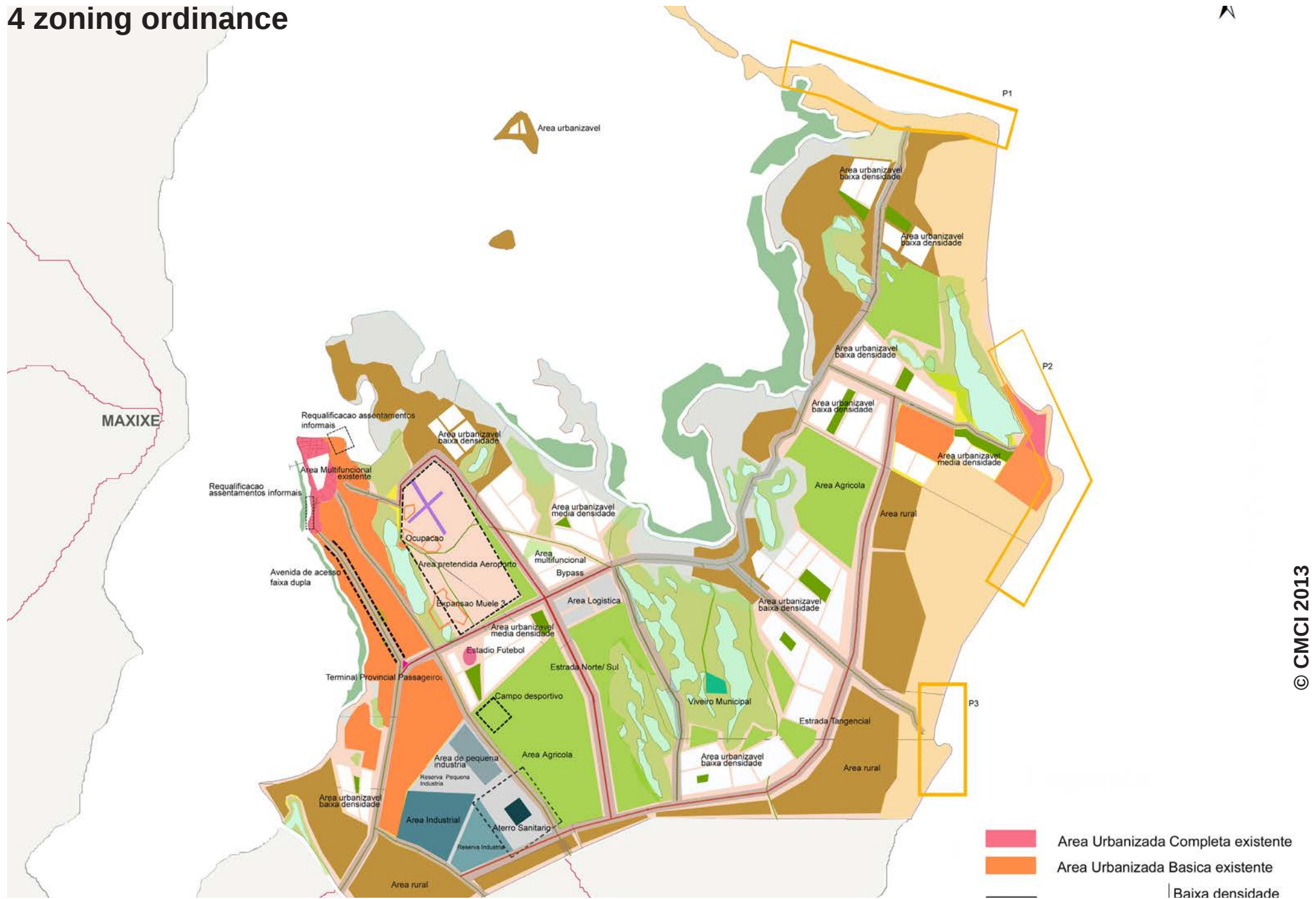


3 infrastructural hardware



© Schetter

4 zoning ordinance



© CMCI 2013

4 transport

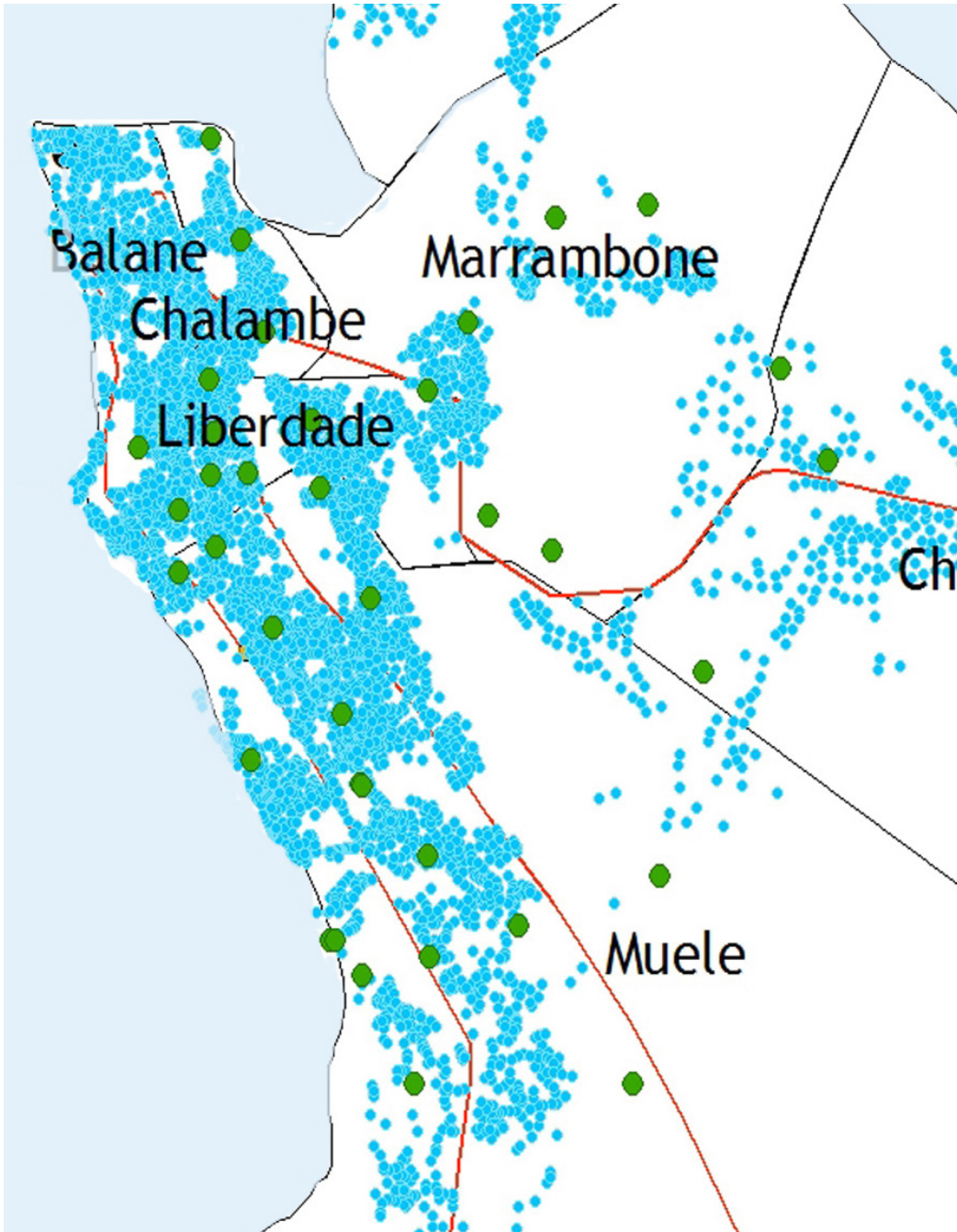


4 electricity



© a) CMCI (2013) b) Schetter

4 water



4 waste



4 sanitation



4 sanitation



4 conclusion



© Schetter

- decentralized development is more suited to context
 - local economy can build on this
 - infrastructure of all sorts can complement this
 - urban planning should reflect and accompany this process
- & grow with it!
& not dominate it!

Thank you!



oschetter@gmx.net

www.habitat-unit.de