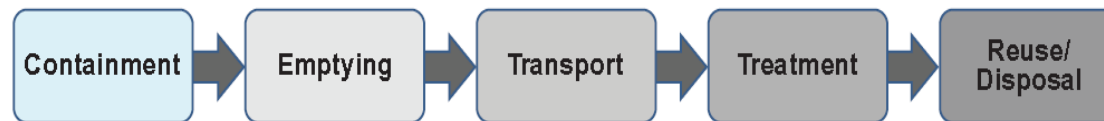


SANITATION SAFETY PLANNING

MANUAL FOR SAFE USE AND
DISPOSAL OF WASTEWATER,
GREYWATER AND EXCRETA

Introducing Sanitation Safety Planning (SSP)

A *safely managed sanitation system* prevents human contact with excreta at all steps of the sanitation chain.



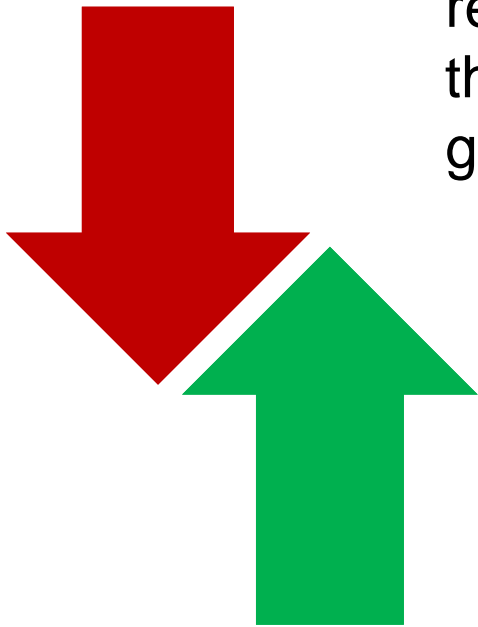
SDG 6.2 “safety managed sanitation”
SDG 6.3 “safe treatment and use of wastewater”

What is SSP?



- SSP is a step-by-step health risk based approach for managing, monitoring and improving sanitation systems
- SSP also assists to implement the 2006 WHO Guidelines for Safe Use of Wastewater, Excreta and Greywater





reduce adverse **health impacts** from the use of wastewater, excreta and greywater, while...

maximizing the **benefits** of their productive use.

Why SSP?

Informal and unintentional use of sludge and wastewater is widespread

Real and perceived health risks are a barrier to scaling sanitation businesses.

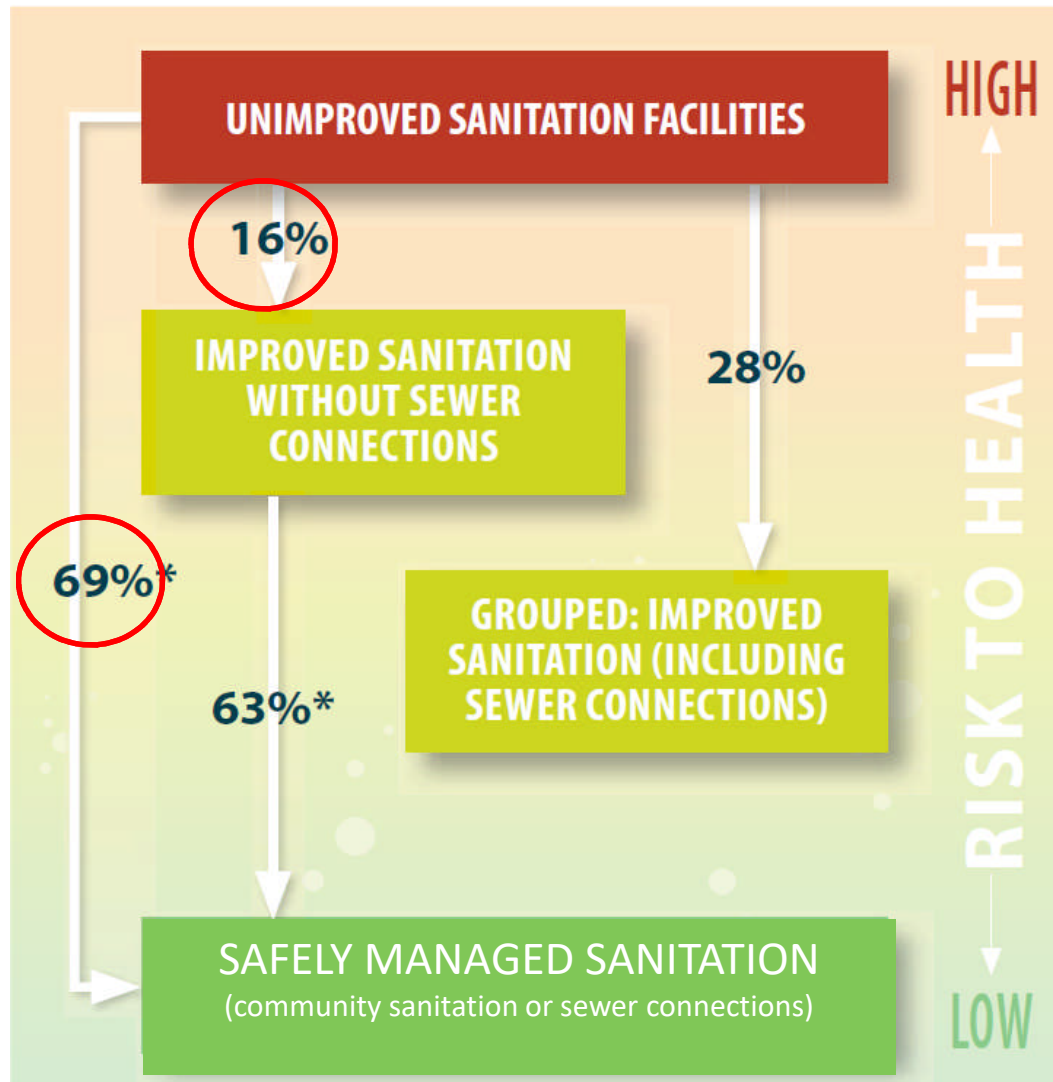
Health risks normally affect the most vulnerable - SSP promotes equity.

SANITATION SAFETY PLANNING

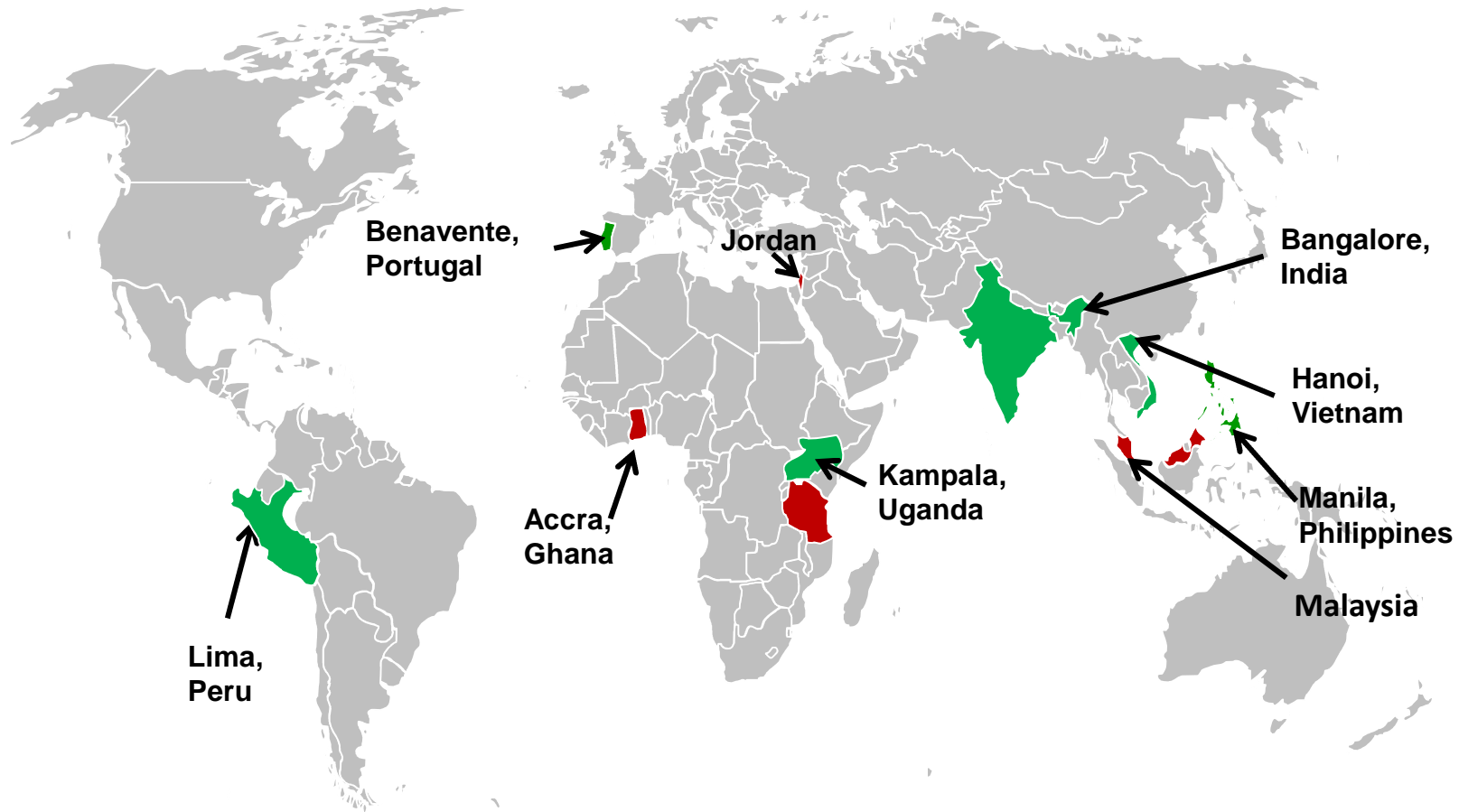
MANUAL FOR SAFE USE AND
DISPOSAL OF WASTEWATER,
GREYWATER AND EXCRETA

Health is the underlying purpose of sanitation – but actual health risk play a small role in planning.

Greater health gains from safe management of the sanitation chain....

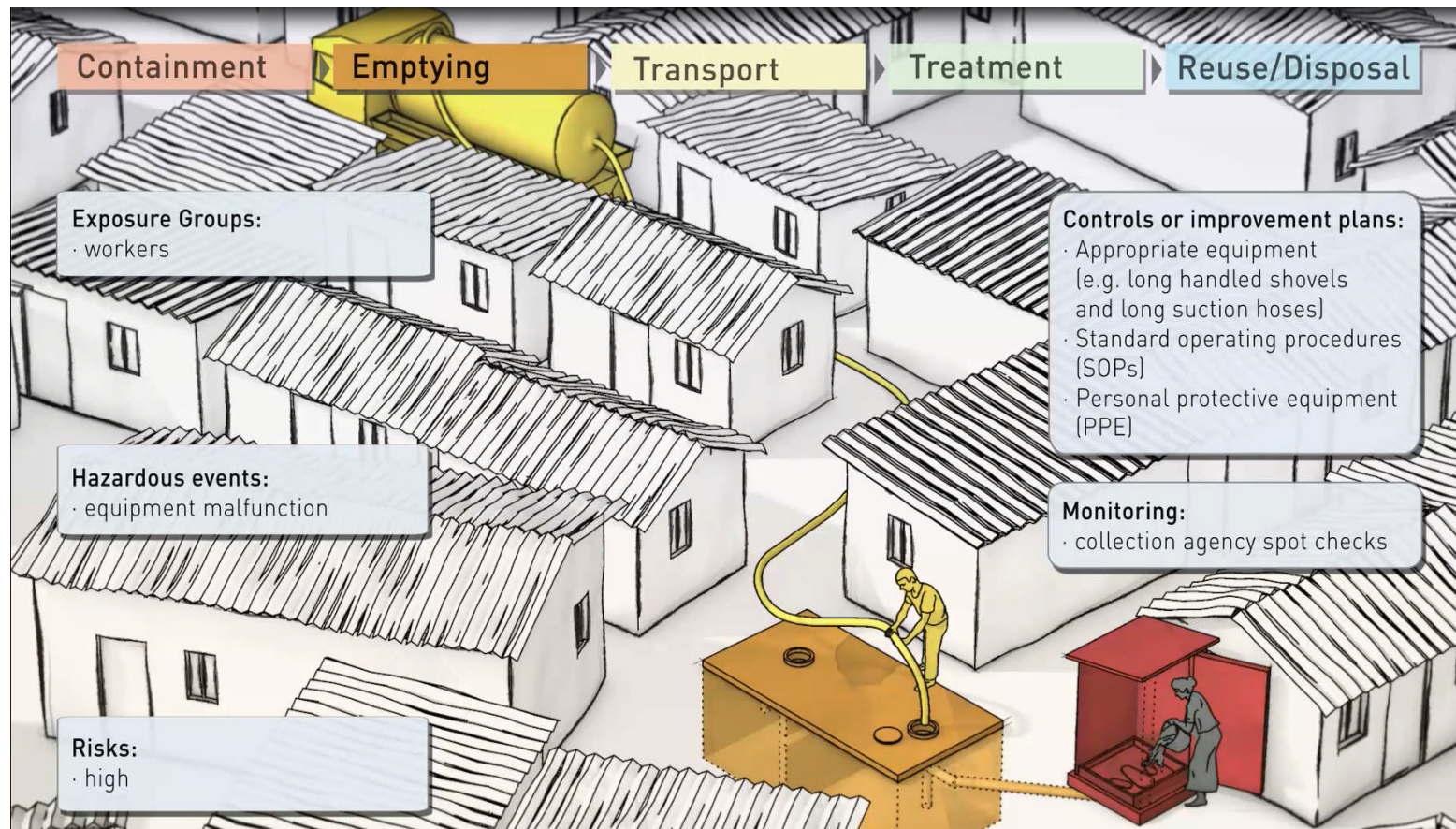


SSP Implementation



How does SSP work? Watch the MOOC

http://www.who.int/water_sanitation_health/sanitation-waste/wastewater/sanitation-safety-planning/en/



Questions / Discussion on SSP for CBS