

GENDER TRANSFORMATIVE PLANNING FOR URBAN SANITATION

Paramita Datta Dey

Senior Research Officer, NIUA

21 February, 2018

3rd SuSanA India Chapter Meeting, Goa

Presentation Outline



- Gender and urban sanitation in India- what does research and evidence tell?
- Existing policy and programmes on urban sanitation in India
- Way Forward

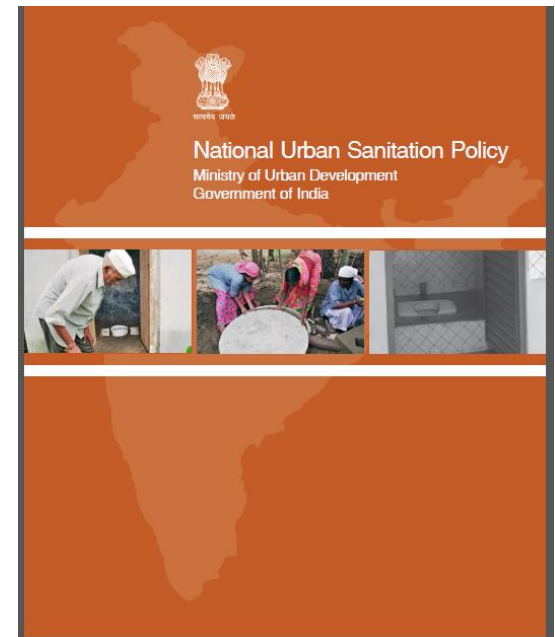
Sanitation and Gender: Insights from research and evidence



- Education
- Menstrual Hygiene Management
- Health aspects
- Safety
- General well-being

National Urban Sanitation Policy (NUSP), 2008

- Behavior change and education; end open defecation, city wide sanitation
- Institutional roles & responsibilities, awareness generation, technology choices, reaching the underserved, incremental and sustained improvements
- Develop City Sanitation Plans (CSP) and State Sanitation Strategies
- Draws attention to women as a vulnerable group but does not elucidate on the specific sanitation-linked needs of women



NUSP...

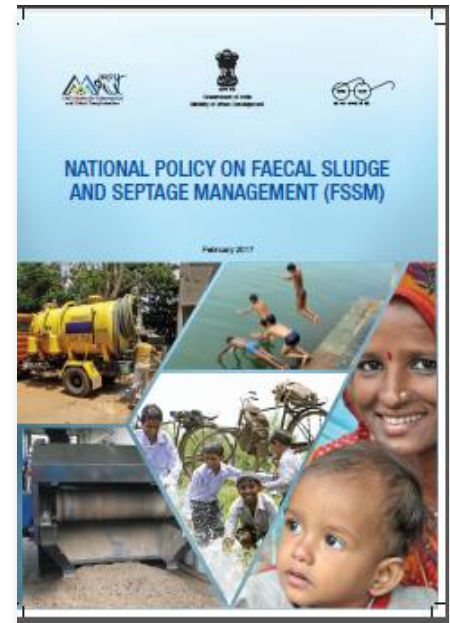


Gender specific suggestions:

- Engage women in design and management of sanitation facilities
- Awareness among stakeholders about women's needs
- Inclusion of MHM in sanitation planning
- Address access, safety and security for women in sanitation facilities
- Collect, collate and use sex-disaggregated data for planning sanitation facilities

National Policy on Faecal Sludge and Septage Management (NFSSM), 2017

- Mainstream FSM
- Define the role of stakeholders – Govt, private sector, civil society etc. for effective FSM
- Establish synergies between various GOI progs (AMRUT, SBM, Smart Cities, HRIDAY etc.) & ensure sustainable sanitation for all
- Incremental approach to achieving standards set by GOI.
- Gender based sanitation planning
- State level strategies



NFSSM...



Gender specific aspects mentioned:

- Mentions addressing Gender specific gap “..will promote gender mainstreaming in FSSM where women are seen as active agents and participants of change, not merely as recipients or victims of policies.”
- Objective 6 “Mitigate gender based sanitation insecurity directly related to lack of toiletand involvement of both genders...”
- Gender mainstreaming of IEC material for FSSM
- Gender budgeting for FSSM projects

Current GoI Programmes that support urban sanitation

Main Urban Development Programmes

- AMRUT
- HRIDAY
- Smart City Mission
- Housing for All

Dedicated Sanitation Programmes

- Swachh Bharat Mission (Urban)

Programmes of Other Ministries

- Namami Gange
- Swachh Bharat: Swachh Vidyalaya

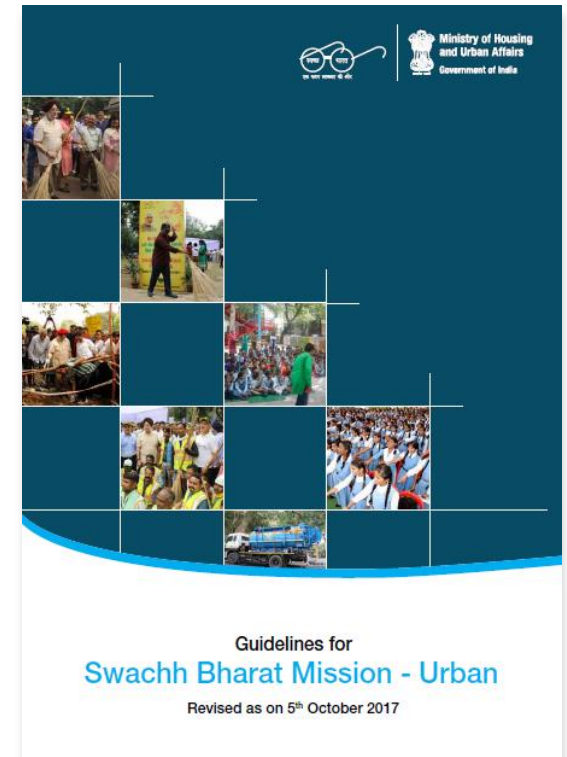
Finance Commission

- 14th Finance Commission

Swachh Bharat Mission (Urban)

Revised SBM (U) Guidelines (October, 2017)

- Mandates preparation of SSS and CSP
- Directs ULBs to ensure availability of public toilets at busy places with high footfall
- Separate toilet facilities for men and women in public and community toilets
- Norms for public toilets: one seat for 35 men; one seat for 25 women, adequate bathing facilities
- However, has no gender specific guidelines



Swachh Bharat Mission (Rural)

Guidelines for Gender Issues in Sanitation (April, 2017)

- Issues of lack of privacy, personal safety, sexual harassment and gender-based violence are faced by women and girls...“
- It recognizes the "health risks through medical conditions such as urinary tract infections, chronic constipation and mental stress".
- The guidelines call for strengthening the role of women in "planning, procurement, toilet construction and monitoring".

Annexure

Guidelines on Gender issues in sanitation

As the Swachh Bharat Mission (Gramin) (SBM-G) has entered the third year of its implementation, it is important to reflect on gender issues in sanitation. It is true that women and girls bear the heaviest burden of poor sanitation and continued open defecation. Issues of lack of privacy, personal safety, sexual harassment and gender-based violence are faced by women and girls each time they defecate in the open. In addition, the situation arising from open defecation puts their health at risk through medical conditions such as urinary tract infections, chronic constipation and mental stress. Another common negative impact of open defecation is witnessed by young girls and women on a monthly basis when they menstruate. Lack of safe, private spaces for women and girls to wash or tend to their personal hygiene needs when menstruating, severely restricts their ability to fully participate in daily activities, including attending school.

2. While increasing number of women are coming to the forefront of the campaign to end open defecation, the following issues are mentioned for consideration.

Role of women in sanitation

3. Women are actively involved in the mobilization of communities through social and behavior change communication for sanitation. However, it is observed that their involvement in the actual process of implementation of the sanitation programme i.e. in planning, procurement, toilet construction and monitoring needs to be strengthened. Since implementation of SBM-G focusses on community engagement, it may be ensured that women are *actively* involved, not only in behaviour change activities, but also in the activities of institutions involved in the process of toilet construction (VWSCs, motivators, procurement committees, etc.). The SBM-G guidelines, Para 7.6.2 states that 50% of members of VWSC should be women. This must be ensured by the State government and local government bodies. Following the trend of increasing women's leadership in local governance, women should also be represented in the leadership of SBM-G committees and institutions like WASH (like Nigrani) committees, Village Water and Sanitation Committees (VWSCs) and Village Water Sanitation and Health Committees (VWSHCs), so that their communities and villages can benefit not just from women's participation but also their leadership.

Messaging in TEC/BCC

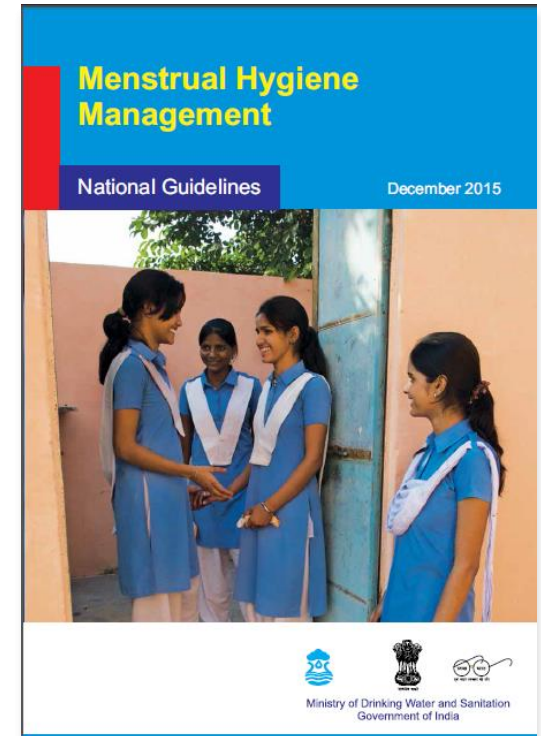
4. It is noted that behaviour-change messaging in SBM-G often includes subjects like 'shame and dignity of women'. While these may be useful for entry-point messaging, they carry risks of lack of ownership by men and the reinforcing of gender stereotypes (like women should not

Ru

Swachh Bharat Mission (Rural)...

Guidelines for Gender Issues in Sanitation (April, 2017)

- Recognizes that women is not a homogenous group – mentions taking cognizance of constraints faced by elderly women, pregnant women; MHM needs of adolescent girls (*MHM Guidelines, 2015, MoDWS*)
- Addresses need for inclusive toilets – child-friendly toilets
- Highlights involvement of both men and women for cleaning toilets
- Recommends user fee concessions for elderly and children in public toilets



...Way Forward


- **Mainstream gender** in all policies and programmes
- **Strengthen women's participation and Equity in decision making:** women under-represented in careers and training on sanitation management
- **Capacity development:** targeted for women
- **Resource Mobilisation:** women's networks access to grants / credit on concessionary terms; allocation of resources small scale providers with women as partners; alternate financing mechanisms (micro-credit) for improving/building sanitation facilities




- **Encourage gender balanced approach in plans:** e.g. public and community toilets: gender related location considerations: proximity of functional facilities, safety measures, supply of water and electricity, maintenance of light fittings etc.
- **Implement monitoring and evaluation plans** to evaluate facilities and use patterns
- **Gender Budgeting** in all programmes and plans



Thank you!

 National Institute of Urban Affairs
1st Floor, Core 4B, India Habitat Centre
Lodhi Road, New Delhi - 110003, INDIA

 +91-97-1770-7119
+91-11-24617517, 24643284

 pdey@niua.org; pdattadey@gmail.com