



Emergency Transfer Stations - HIF



Niall Boot
January 2015



Project Background

- Humanitarian Innovation Fund project
- Development of rapidly deployable transfer station product (Sanergy)
- GOAL linking humanitarian responders to social enterprises
- Increasing bag-based emergency sanitation



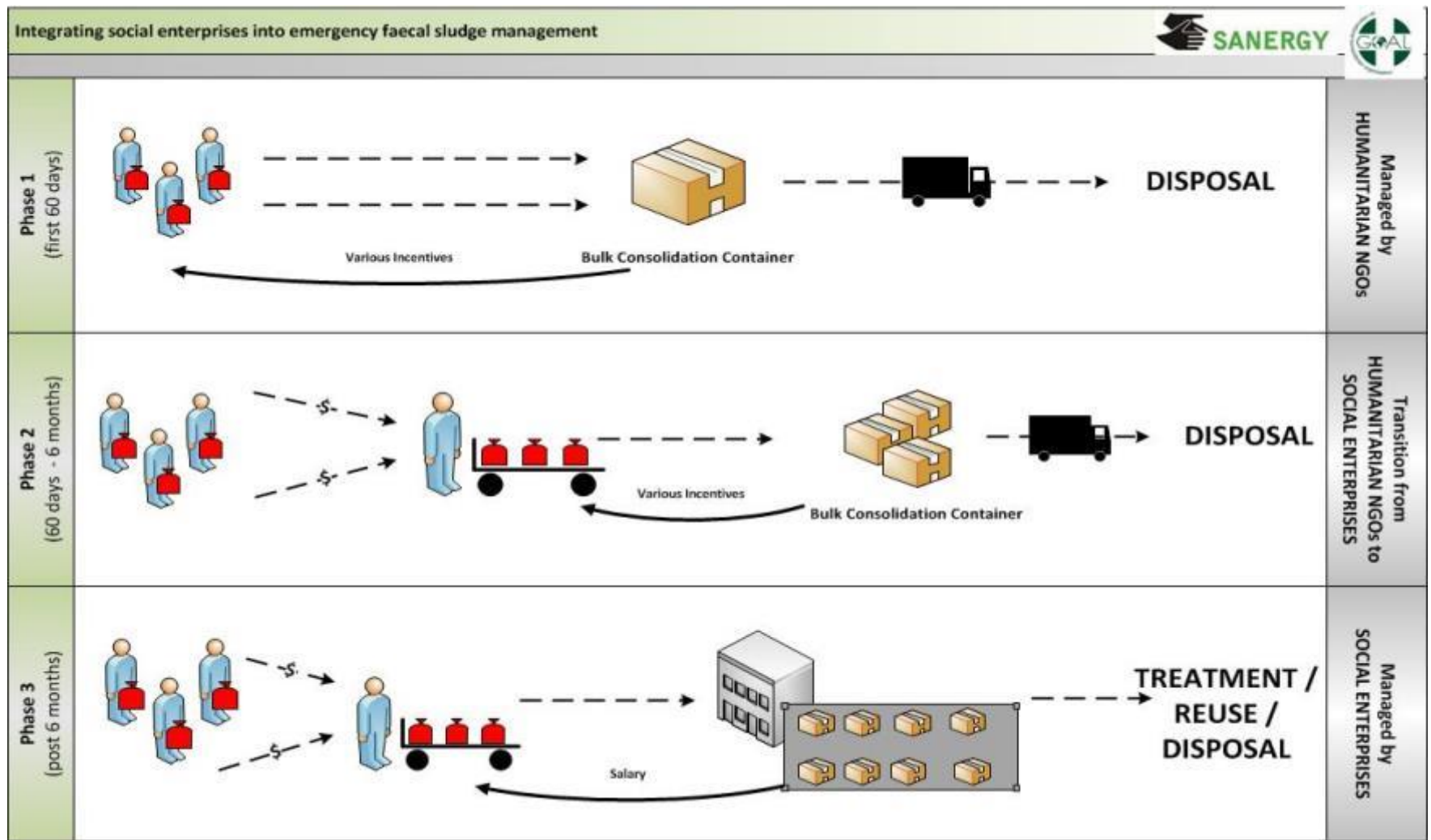
Upgrading Solution



- From this

- To this

Changing Incentives





Technical Experiences

- Requirement to accept range of waste
- Rapidly deployable (low weight & volume)
- Transportable when full
- Supply for certain population
- Not just station but its set-up



Management Experiences

- Huge variability in possible arrangements
- Stakeholders aim to produce guidance on set-up and management
- Aim to transition from humanitarian responders to social enterprises
- Final disposal to be considered



Governance Experiences

- Needs to fit into range of government systems
- Trying to get government design inputs



Finance Experiences

- Product still under design; cost not known
- Incentives during emergency need to be properly aligned to potential future management
- Social enterprises to input into response finance mechanisms