



पेयजल एवं स्वच्छता विभाग
जल शक्ति मंत्रालय
भारत सरकार

DEPARTMENT OF DRINKING WATER AND SANITATION
MINISTRY OF JAL SHAKTI
GOVERNMENT OF INDIA

सत्यमेव जयते



एक कदम स्वच्छता की ओर

FROM ODF TO ODF PLUS RURAL SANITATION STRATEGY 2019–2029



The document has been prepared by the Department of Drinking Water and Sanitation, Ministry of Jal Shakti, with support from UNICEF India.



पेयजल एवं स्वच्छता विभाग
जल शक्ति मंत्रालय
भारत सरकार

DEPARTMENT OF DRINKING WATER AND SANITATION
MINISTRY OF JAL SHAKTI
GOVERNMENT OF INDIA

FROM ODF TO ODF PLUS RURAL SANITATION STRATEGY

2019–2029

Department of Drinking Water & Sanitation
Ministry of Jal Shakti, Government of India



TABLE OF CONTENTS

LIST OF ABBREVIATIONS	vii
EXECUTIVE SUMMARY	1
CHAPTER: 1	
Objectives of the Strategy.....	3
1.1 Goals	3
1.2 Scope	4
CHAPTER: 2	
Background to the Strategy and Learnings from SBM-G	5
2.1 Sustainable Development Goals (SDGs) related to Sanitation	5
2.2 SBM-G: Charting a New Discourse in Sanitation	5
CHAPTER: 3	
Programmatic Elements of ODF Plus	9
3.1 ODF Sustainability	9
3.1.1 Ensuring access to sanitation for new/left behind households	9
3.1.2 Appropriate sanitation infrastructure and its operation and maintenance (O&M).....	9
3.2 Solid and Liquid Waste Management (SLWM) in rural areas.....	10
3.2.1 Solid Waste Management.....	10
3.2.2 Biodegradable Waste Management.....	11
3.2.3 Plastic Waste Management	11
3.2.4 Greywater Management.....	11
3.2.5 Fecal Sludge Management	12
CHAPTER: 4	
Sustaining Behaviour Change	15
4.1 Information Education Communication (IEC) and	15
Behaviour Change Communication (BCC)	
4.2 Capacity Strengthening	15

CHAPTER: 5

Decentralized Governance and Institutional Structure	17
5.1 Institutional Structure	17
5.2 Role of Panchayati Raj Institutions	18
5.3 Convergence and partnerships.....	18
5.4 Sanitation Financing.....	19
5.4.1 Public Financing	19
5.4.2 Alternative financing for sanitation.....	20
5.5 Monitoring and Evaluation.....	20
5.5.1 Independent Verification	20
5.5.2 Community led monitoring	20
5.5.3 Fostering healthy competition to accelerate Implementation.....	20

List of Figures

Figure 1: Overarching framework of the strategy	2
Figure 2: Key differentiators and impact under SBM(G).....	6
Figure 3: Trajectory of sanitation progress achieved under SBM-G	7
Figure 4: 4 Key focus areas of sustaining ODF	9
Figure 5: Institutional Structure.....	17
Figure 6: Partnership and Convergence	19

List of Tables

Table 1: Strategies for Solid Waste Management	10
Table 2: Interventions for greywater management	11
Table 3: FSM systems for rural areas.....	12
Table 4: Results Framework	21

LIST OF ABBREVIATIONS

ASHA	Accredited Social Health Activist	MoRD	Ministry of Rural Development
ANM	Auxiliary Nurse Midwife	MoSJE	Ministry of Social Justice and Empowerment
AWW	Anganwadi Worker	MoTA	Ministry of Tribal Affairs
BMGF	Bill and Melinda Gates Foundation	NARSS	National Annual Rural Sanitation Survey
CSC	Community Sanitary Complex	NSDC	National Skill Development Corporation
CRSP	Central Rural Sanitation Programme	O&M	Operation and Maintenance
CSR	Corporate Social Responsibility	ODF	Open Defecation Free
DEWATS	Decentralized Waste Water System	PPP	Public Private Partnerships
FFC	Fourteenth Finance Commission	PRI	Panchayati Raj Institutions
FSM	Fecal Sludge Management	SARSS	State Annual Rural Sanitation Survey
GOI	Government of India	BCC	Behaviour Change Communication
GP	Gram Panchayat	SBM-G	Swachh Bharat Mission-Grameen
IEC	Information Education and Communication	SDG	Sustainable Development Goals
IHHL	Individual Household Latrines	SIRD	State Institute of Rural Development
IPC	Interpersonal Communication	SLWM	Solid and Liquid Waste Management
MFI	Microfinance Institution	STP	Sewage Treatment Plant
MWM	Menstrual Waste Management	TSC	Total Sanitation Campaign
MHRD	Ministry of Human Resource Development	UNICEF	United Nations Children's Fund
MIS	Management Information System	WHO	World Health Organization
MoPR	Ministry of Panchayati Raj		
MoR	Ministry of Railways		

EXECUTIVE SUMMARY

The Swachh Bharat Mission was launched on 2nd October 2014 by the Prime Minister of India towards eradicating the practice of open defecation across the country. The rural component of the Mission, Swachh Bharat Mission – Grameen (SBM-G) has since demonstrated unprecedented progress. As of September 2019, all States and Union Territories had reported their rural areas open defecation free (ODF) ahead of the target deadline of 2nd October, 2019 – a befitting tribute to Mahatma Gandhi on his 150th birth anniversary.

The key instrument in leading the sanitation revolution which made India ODF has been people's participation, transforming the Mission into a *jan andolan* (a people's movement).

Having achieved these outcomes, there is now a need to sustain the gains made under the Mission and to ensure that the health and hygiene benefits continue to be realized. Toilet usage behaviours need to be continuously reinforced, and universal safe management of solid and liquid waste management needs to be achieved. State Governments must also ensure that any new households, as well as any households that may have been left behind are facilitated to build a toilet. This can be achieved through a robust and inclusive strategy for Central and State Governments, District Administrations, Panchayati Raj Institutions and civil society to work in unison towards achieving ODF Plus.

ODF Plus entails that ODF behaviours are sustained, and every village has access to solid and liquid waste management.

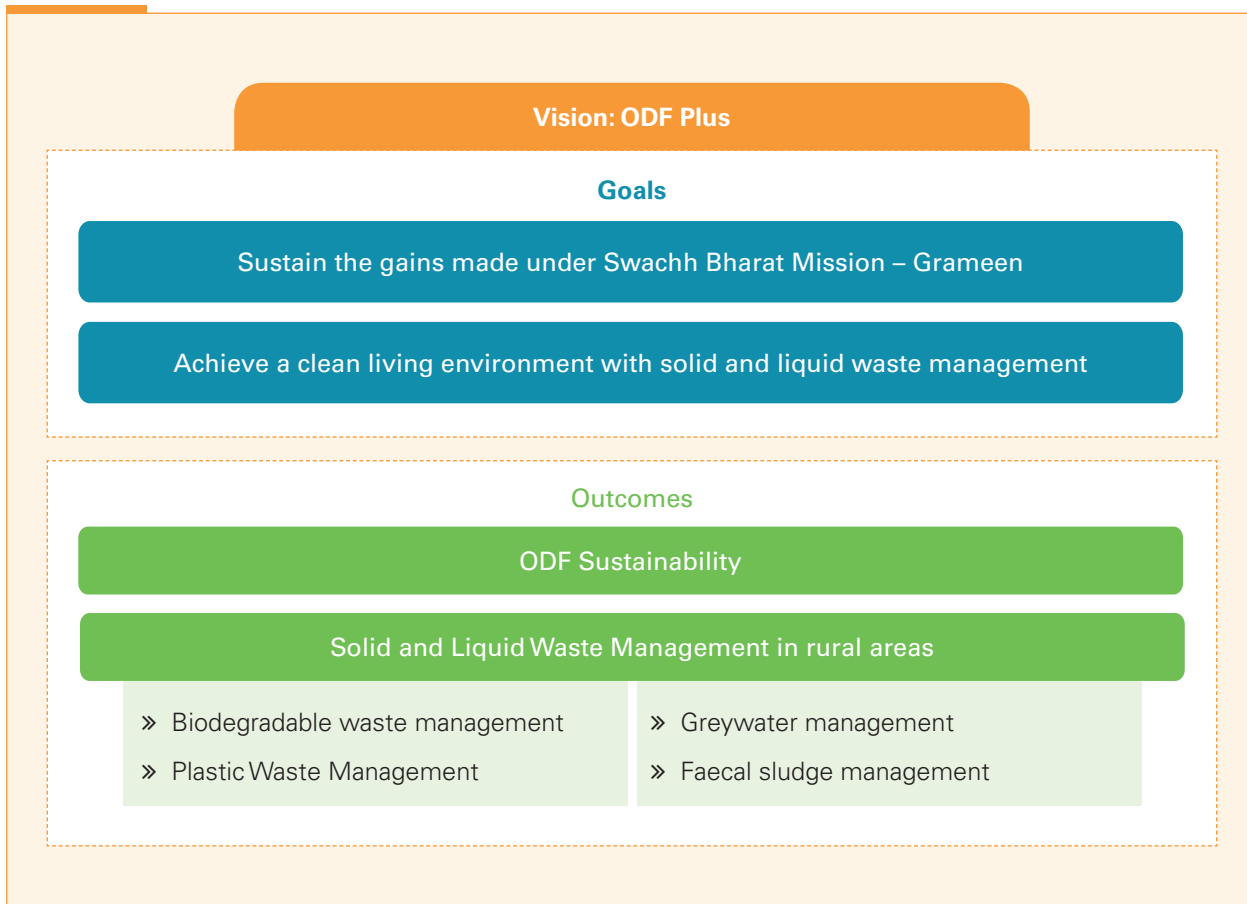
India is working toward this long term vision of ODF Plus. This is necessary for India to sustain its achievement towards the Sustainable Development Goal (SDG) 6, especially SDG 6.2.

With the creation of the Ministry of Jal Shakti, the Government of India has made a significant move towards institutional integration of the water sector. The new central programme, Jal Jeevan Mission, by providing water supply to every household by 2024 and its focus on source sustainability, will give major impetus to the sustainability of the gains achieved by the Swachh Bharat Mission – Grameen.

This ten year sanitation strategy for rural areas in India, prepared by the Department of Drinking Water and Sanitation (DDWS), Ministry of Jal Shakti, Government of India, in consultation with State Governments and other stakeholders, lays down the framework for achieving this long term vision. The strategy is intended to guide , local governments, policy makers, implementors and all relevant stakeholders including the people of rural India in the planning for and achievement of ODF Plus.

The overarching framework of this strategy (including its vision, goals, outcomes and key components) is given below:

Figure 1: Overarching framework of the strategy



OBJECTIVES OF THE STRATEGY

This document outlines the ten year strategy for sanitation in rural areas in India from 2019 to 2029, which is aimed at achieving the vision of ODF Plus. ODF Plus includes sustaining the usage of safe sanitation facilities by all, including by new households and any households that may have been left behind, as well as effective disposal of solid and liquid waste. The strategy is aligned to Sustainable Development Goal (SDG) 6- Clean Water and Sanitation.

This strategy has been prepared through a collaborative and consultative process which includes workshops with State Governments, policy makers, and development partners and other key implementors and stakeholders, and has undergone multiple rounds of review and suggestions by the key actors. The strategy is intended to guide the Mission further, local governments, policy makers, implementors and all relevant stakeholders including the people of rural India in planning for and the achievement of ODF Plus.

The following section details the goals of the strategy, its scope and the aspects of sanitation that will be covered through the document.

1.1 Goals

India is committed to sustaining its ODF status having achieved it under the Swachh Bharat Mission- Grameen (SBM-G) over the last five years. Going forward the challenge is to up-scale ODF to ODF Plus.

The 10 year strategy has the following objectives:

- (i) Sustaining the gains of the SBM-G and ensuring sustained access to safely managed sanitation for all rural Indians;
- (ii) Achieve a clean living environment through solid and liquid waste management.

The elements of the strategy to achieve ODF Plus are stated as under:

1. Sustained usage of Individual Household Latrines (IHHL)
2. Ensuring no one is left behind and providing sanitation access to new households (HHs)
3. Sanitation coverage of public spaces (through public and community toilets)
4. Implementation of Solid and Liquid Waste Management (SLWM) in rural areas
5. Visible cleanliness, and solid and liquid waste management

1.2 Scope

The scope of the strategy covers interventions towards achieving ODF Plus.

ODF Sustainability has the following sub-components, which include (i) ensuring access to sanitation for new households and anyone left behind, (ii) providing or retrofitting sanitation infrastructure as required and (iii) continuous behaviour change communication.

SLWM has the following sub-components (i) Biodegradable Waste Management (ii) Plastic Waste Management (iii) Greywater Management and (iv) Fecal Sludge Management, wherever needed.

The programme components mentioned above are supported by key cross-sectional interventions such as Information, Education and Communication (IEC), decentralized governance and capacity strengthening of

Panchayati Raj Institutions (PRIs), sanitation financing, monitoring and evaluation and ensuring holistic coverage of the rural sanitation value chain. As before, the Mission will continue its focus on people's participation in achieving its goals and sustain the *jan andolan* for sanitation. 'Non-Government Engagement' such as civil society at the grassroots will be prioritized for accelerated and sustained outcomes. There will also be enhanced focus on Research and Development (R&D) to encourage innovation at grassroots for achieving ODF Plus.

The strategy allows for flexibility to cater for differences in demographics, economics and governance structures for achieving ODF Plus in their local contexts.

Geographical scope: The strategy pertains to sanitation in rural areas of India.

Timeframe: 2019 to 2029



CHAPTER: 2

BACKGROUND TO THE STRATEGY AND LEARNINGS FROM SBM-G

2.1 Sustainable Development Goals (SDGs) related to Sanitation

The SDGs provide the international development context to India's rural sanitation strategy. In particular, SDG 6 commits nations to achieve universal access to safe and adequate sanitation to all by 2030. With the elimination of open defecation, India has achieved SDG 6.2 eleven years before the SDG deadline of 2030.

2.2 SBM-G: Charting a New Discourse in Sanitation

SBM-G has achieved substantial success and transformed itself into a *Jan Andolan*. There are various aspects that differentiate the approach adopted under SBM-G from its predecessors as shown in Figure 3 (on the next page).

The impact of this mission has gone beyond sanitation coverage, positively influencing public health, the environment and overall economy of the country. As per the World Health Organization (WHO)¹, the mission is estimated to have potentially averted 300,000



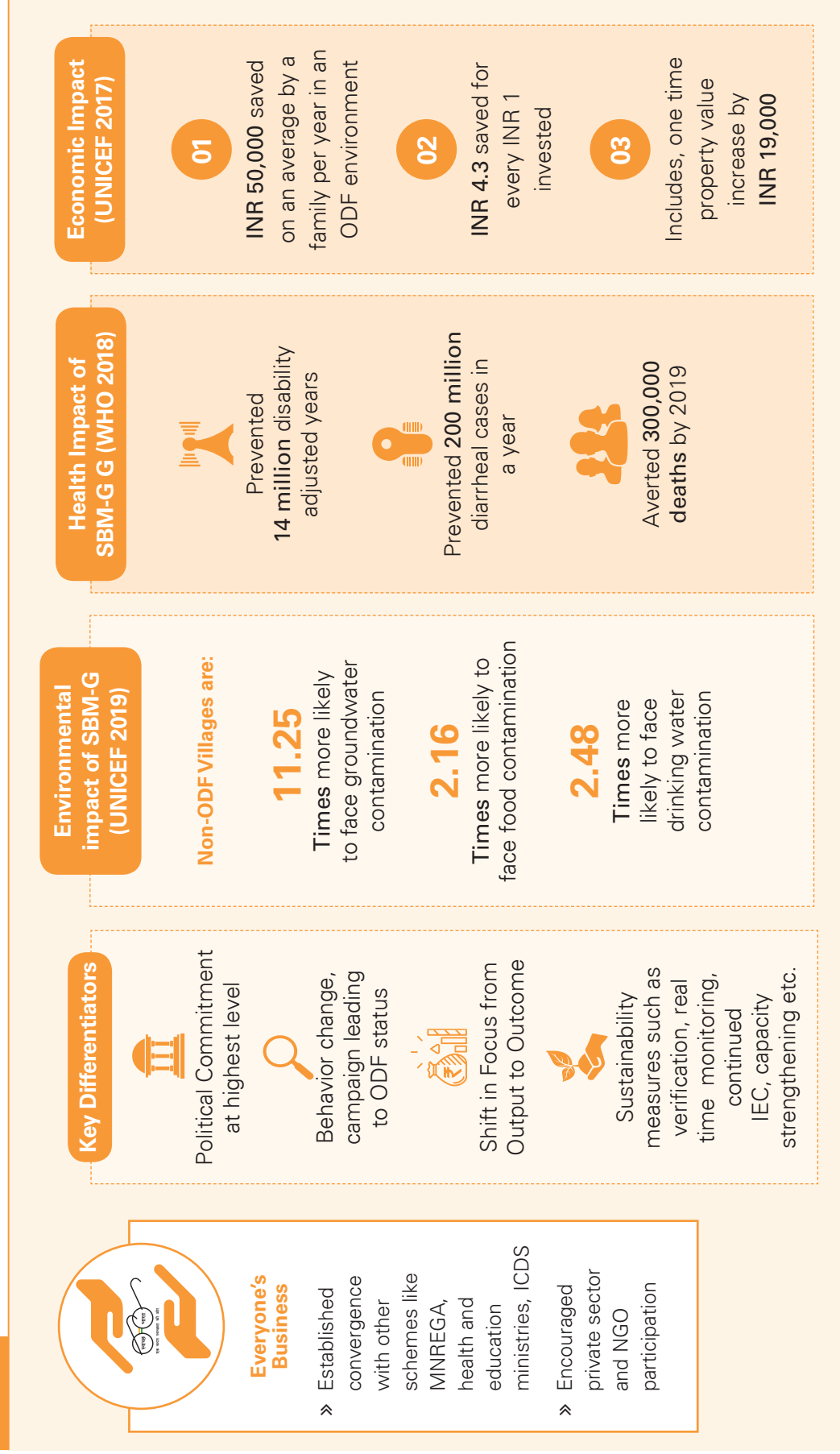
deaths in 2019, preventing nearly 200 million cases of diarrhoea occurring annually prior to SBM-G. It has also saved 14 million disability adjusted years (August, 2018). In a study conducted by the Bill and Melinda Gates Foundation (BMGF)², it was found that both children and mothers residing in ODF areas were likely to be healthier, with a 15 per cent decrease in stunted growth rate, 37 per cent reduction in wasting cases, and a 32 per cent reduction in the number of mothers with low BMI (May-June 2017). Additionally, UNICEF estimates³ significant economic benefits of

¹<http://www.searo.who.int/mediacentre/features/2018/indias-commitment-accelerated-sanitation-coverage/en/>

²Review of health data in selected ODF and non ODF districts under SBM, Bill and Melinda Gates Foundation, 2017 https://mdws.gov.in/sites/default/files/BMGF_Health_Impact_Study_final.pdf

³Financial and Economic impact of Swachh Bharat Mission, UNICEF, 2017 <http://indiaenvironmentportal.org.in/reports-documents/financial-and-economic-impact-swachh-bharat-mission-india-summary-report>

Figure 2: Key differentiators and impact under SBM(G)



Source: BMGF study on review of health data in ODF and non ODF districts under SBM (2017), Financial and Economic impact of Swachh Bharat Mission, UNICEF (2017), Environmental Impact of SBM on water, soil and food, UNICEF (2018)

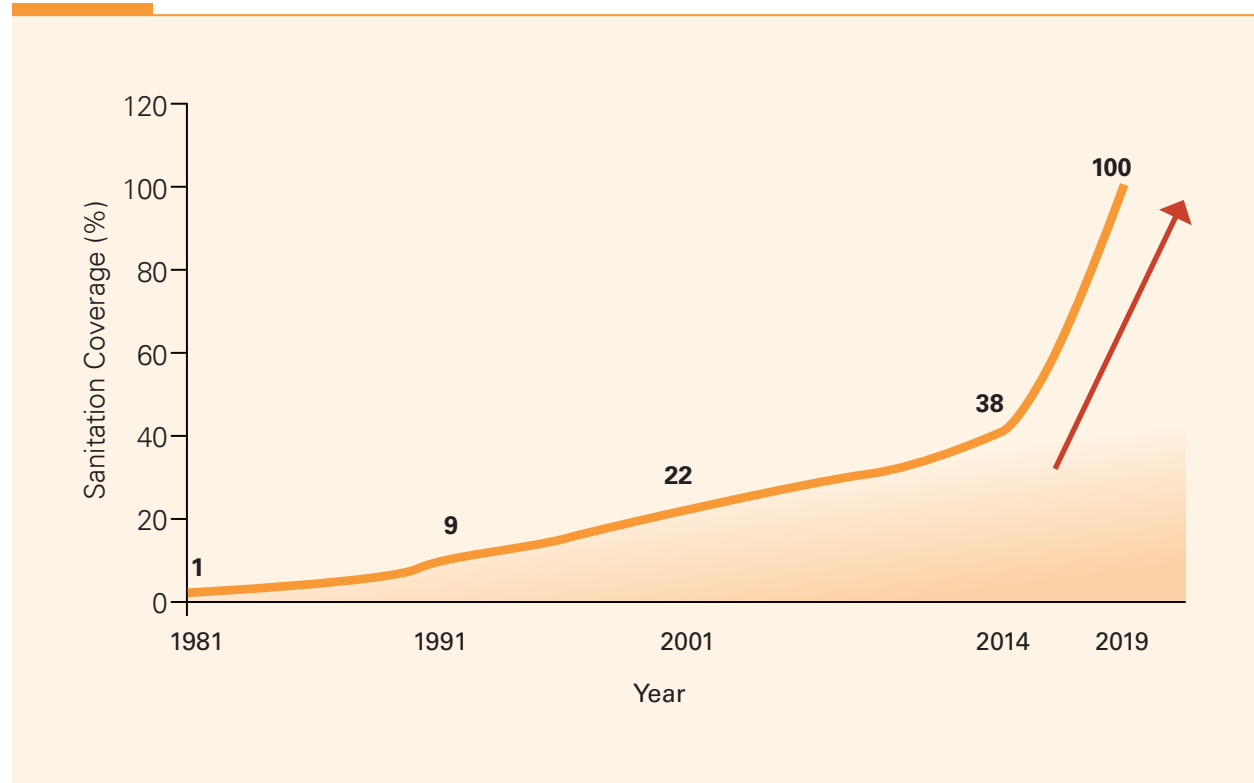
According to NARSS 2018–19, 96% of households in rural India use their household toilets-indicating sustained usage of toilets created under SBM

the mission calculated as approximately INR 50,000 a year for a family living in an ODF environment. According to this research, there is an overall saving of INR 4.3 for every INR 1 invested in sanitation. Another study from UNICEF on the Environmental Impact of SBM on water, soil and food has shown that non-ODF villages are more likely to face

food, groundwater, soil and drinking water contamination than ODF villages⁴.

There is still a need to sustain the gains made during SBM-G, in coverage, usage of toilets, visible cleanliness as well as behaviour change towards safely managed sanitation.

Figure 3: Trajectory of sanitation progress achieved under SBM-G



⁴Study to Ascertain the Impact of the achievement of Open Defecation Free (ODF) status, on the incidence of Environmental Contamination in Odisha, Bihar and West Bengal, UNICEF 2019



दरवाजा बंद तो बिमारी बंद

रोग बीमारी से मिलती
सुरक्षा, हम करगे स्वच्छता

बिहार

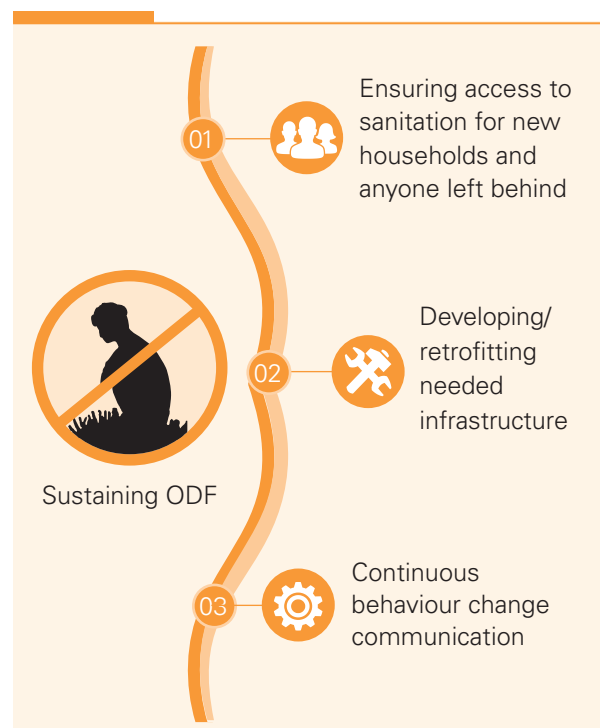
PROGRAMMATIC ELEMENTS OF ODF PLUS

ODF Plus is the underlying vision of this strategy and has been defined in earlier sections. Therefore, focus will be on sustaining ODF and ensuring Solid and Liquid Waste Management in rural areas which are elaborated in following sections.⁵

3.1 ODF Sustainability

Sustaining ODF is the fundamental focus of India's sanitation strategy. Key elements for sustaining ODF at the village level are presented below:

Figure 4: Key focus areas of sustaining ODF



3.1.1 Ensuring access to sanitation for new/left behind households

This will entail:

- ▶ Covering newly emerging households with IHHL
- ▶ Covering any households that may have been left behind with IHHL
- ▶ Construction of Community Sanitary Complexes in Gram Panchayats (as required per State's assessment) to cover the needs of floating population and large congregation in GPs such as melas/tourist places/religious places

3.1.2 Appropriate sanitation infrastructure and its operation and maintenance (O&M)

Gram Panchayats (GPs) will play a key role in ensuring the Operation and Maintenance of sanitation infrastructure and involving communities in the same.

a. Usage of appropriate technologies for different topographies

For toilets for new households in the following topographies, modifications can be made to toilet technology as appropriate, similar to what has been done for existing SBM-G toilets in these regions.

⁵ODF+ Advisory, Department of Drinking Water and Sanitation, Government of India

For example:

- ▶ In **high water table** areas and areas prone to **seasonal flooding**, given the risk of contaminating ground water, the toilet design can be modified by raising the pit above the ground and covering the exposed part with earth by making a mound for absorbing the leachate
- ▶ In **cold mountainous regions** the pits can be constructed below the frost line.
- ▶ In **rocky soils** where fissures in rock spread pollution, toilet linked biogas plants, ecosan toilets and septic tanks with secondary treatment systems can be used.

b. Retrofitting of toilets

Out of the 10 crore toilets constructed in rural India under SBM-G, there are some toilets with single-pits and septic tanks. Similarly, many such toilets were constructed under previous programmes as well. To ensure sustainability in the future, they may be retrofitted as appropriate:

- ▶ Toilets which are not constructed as per standard and/or are single pit toilets may be

retrofitted to twin-pit, so that they can be used on a continued basis

- ▶ Plans to be made to repair toilets which may become defunct over a period of time
- ▶ Construction of soak pits for septic tanks, wherever not already present

3.2 Solid and Liquid Waste Management (SLWM) in rural areas

3.2.1 Solid Waste Management

The strategy going forward will continue to focus on strengthening Solid Waste Management (SWM) in rural areas, with emphasis on community created and managed infrastructure. The strategy for SWM would operate on two basic principles:

1. Segregation⁶ of waste streams at source to enable safe handling as well as conserving resources
2. Reduce-Reuse-Recycle-Recover(energy)-Refuse(dispose) paradigm for conserving resources

The strategy for different types of solid waste management is as follows:

Table 1: Strategies for Solid Waste Management

Type of Waste	Collection Options	Strategy for disposal/treatment
Bio-degradable household waste and cattle waste	<ol style="list-style-type: none"> 1. No collection 2. Routine collection using low cost vehicles such as tri-cycles 	<ol style="list-style-type: none"> 1. Composting or biogas plants at household 2. Composting or biogas plants at community, GP or cluster of GPs level
Non-bio degradable household waste with larger focus on plastic waste	<ol style="list-style-type: none"> 1. Routine collection using low cost vehicles such as tri-cycles 	<ol style="list-style-type: none"> 1. Storage infrastructure at village level, for consequent appropriate disposal 2. Material Recovery Facility at block level, for consequent appropriate disposal

⁶Segregation means sorting and separate storage of various components of solid waste namely biodegradable wastes including agriculture and dairy waste, non-biodegradable wastes including recyclable waste, non-recyclable combustible waste, sanitary waste and non-recyclable inert waste, domestic hazardous wastes, and construction and demolition wastes

3.2.2 Biodegradable Waste Management

Biowaste from households shall be encouraged to be composted at the household level itself through rigorous IEC. Community level composting of waste generated at public places and waste collected from households which cannot compost at their premises shall be done by the GP.

As a subset of managing bio-degradable waste, the Galvanising Organic Bio Agro Resources-Dhan (GOBARDHAN) initiative with its focus on keeping villages clean through waste recovery and conversion of waste into resources will be continued as required. At the district level, model bio-gas plant projects will be initiated with funding support from Government, as before. Salient features of the initiative are as follows:

- ▶ Existing business models will continue as per State's requirements
- ▶ The coverage of the scheme may be extended by the Districts/Blocks/GPs.
- ▶ States have the flexibility to adopt the appropriate technology best suited to the local conditions. The technology should be easy to operate and maintain and should have low O&M cost.

3.2.3 Plastic Waste Management

Plastic Waste as a sub component of solid waste will be an important focus of this strategy. The key strategies for Plastic Waste Management will be:

- ▶ **Segregation:** Segregation may be ensured at the source.
- ▶ **Collection:** Households with support from Gram Panchayats should collect all plastic waste at the village level. GPs should make arrangements for storage and transportation of collected plastic waste to a Material Recovery Facility (MRF) at the Block level.
- ▶ **Disposal/treatment:** All plastic waste collected at the Block level must be effectively disposed using appropriate methods.
- ▶ IEC campaigns to be regularly undertaken discouraging the use of single use plastic, along with suggested alternatives and methods for its safe disposal. GPs may facilitate Behaviour Change Communication (BCC) measures with the help of local volunteers to discourage the use of single use plastic

3.2.4 Greywater Management

Greywater is the wastewater generated from water use in kitchens, bathing and washing clothes. When not managed properly greywater stagnates leading to mosquito breeding and incidence of diseases or may reach ponds, lakes and rivers causing both microbial and chemical pollution. The strategy for its management is as follows:

Table 2: Interventions for greywater management

Level of intervention	Description of intervention
Community level	Community soak pits or leach pits
Village or large scale	<ol style="list-style-type: none"> 1. Conveyance through pipes or existing open drains, if appropriate 2. Treatment systems before drains discharge into water bodies including anaerobic systems such as DEWATS 3. Waste stabilization ponds or any other appropriate system

3.2.5 Fecal Sludge Management

Fecal sludge management is a key component of the ODF-Sustainability activities. FSM will assume the following approach:

- ▶ Wherever possible, for retrofitting existing toilets and in the construction of toilets for new households, the twin pit toilet technology will be the preferred toilet technology option for on-site FSM
- ▶ Co-treatment options using existing Sewage Treatment Plant (STP) facilities of nearby urban or rural areas will be employed
- ▶ Trenching to be promoted in remote villages
- ▶ Fecal Sludge Treatment Plants (FSTPs) for clusters of villages
- ▶ States will have the flexibility to adopt the appropriate technology best suited to the local conditions. Methodology and technology should be easy to operate and maintain and should have low O&M cost.

The FSM system to be adopted for rural areas, in terms of retrofitting of toilets, will be as follows:

Table 3: FSM systems for rural areas

Type of Containment	Context or Issue	Remedy	If Remedy not feasible
Twin pit system	Leaks in the Yjunction	Retrofit	Co-composting or Solar drying with long storage is recommended for material recovered from pit emptying
	Less than 1m between pits	Retrofit	
	Rim of pits are allowing rain water to enter pit	Retrofit	
	In high water table area or too close to groundwater source	Upgrade to in-situ treatment	Implement FSM
Single pit	All single pits will be considered for upgrades	Upgrade to twin pit	Implement FSM
Septic tank	Requires desludging at periodic intervals	De-sludge ever 3-5 years (as required)	Implement FSM

Note: Menstrual Waste Management

State specific strategies on Menstrual Hygiene Management, including Menstrual Waste Management, may be supported under the ODF Plus strategy. The DDWS focus will be mainly on menstrual waste management, including generating related awareness.





SUSTAINING BEHAVIOUR CHANGE

4.1 Information Education Communication (IEC) and Behaviour Change Communication (BCC)

Information, Education and Communication (IEC) and Behaviour Change Communication (BCC) have been the primary enablers of behaviour change under the Swachh Bharat Mission (Grameen). This strategy includes a) regular above the line messaging through mass media at central and state levels for reinforcing behaviour change and b) continued below-the-line inter-personal communication to sustain the usage of toilets and for overall safe sanitation practices such as SLWM and hygiene behaviours.

The core objectives of the IEC/BCC strategies are outlined below:

- a) **Sustained toilet usage:** BCC activities will focus on regular usage of toilets
- b) **Safe sanitation for new households:** Primary focus will be on advocating for twin pit toilet technology adoption with flexibility of any other safe sanitation technology as per the local conditions
- c) **Hygiene Behaviour Adoption:** Promote the concept of handwashing at critical times and disseminating information on child excreta management, menstrual hygiene management

- d) **Community based ODF Surveillance:** Information on adherence to new social norms for sustaining ODF behaviours, at household and community level.
- e) **Promotion of SLWM:** plastic waste management, household segregation of waste, composting, fecal sludge management and greywater management

4.2 Capacity Strengthening

Under the Swachh Bharat Mission- Grameen, capacity building has played an essential role in creating improved capacities for the functionaries working at the grassroots and scaling up rural sanitation in India. Going forward, this capacity will be strengthened as following:

- ▶ Convergence with national skilling platforms such as National Skill Development Corporation (NSDC) to enhance skills in sanitation and allied sectors.
- ▶ Capacity strengthening of Sarpanches, Panchayat Secretaries, functionaries on augmentation and upgradation of sanitation services promoting the 5Rs and ODF Sustainability
- ▶ Each State and District will have a Training Management Unit (TMU) to provide oversight and support to the capacity

strengthening interventions. The District level TMU shall have the responsibility of imparting training at the Block level for all the Gram Panchayats and Panchayat Secretaries and Swachhagrahis working in the GPs

- ▶ Where available and feasible and as best practice, states may assign existing institutions with expertise in water and sanitation as State Centres of Excellence on Swachhata for sustainability and create dedicated sanitation and SLWM cells.



DECENTRALIZED GOVERNANCE AND INSTITUTIONAL STRUCTURE

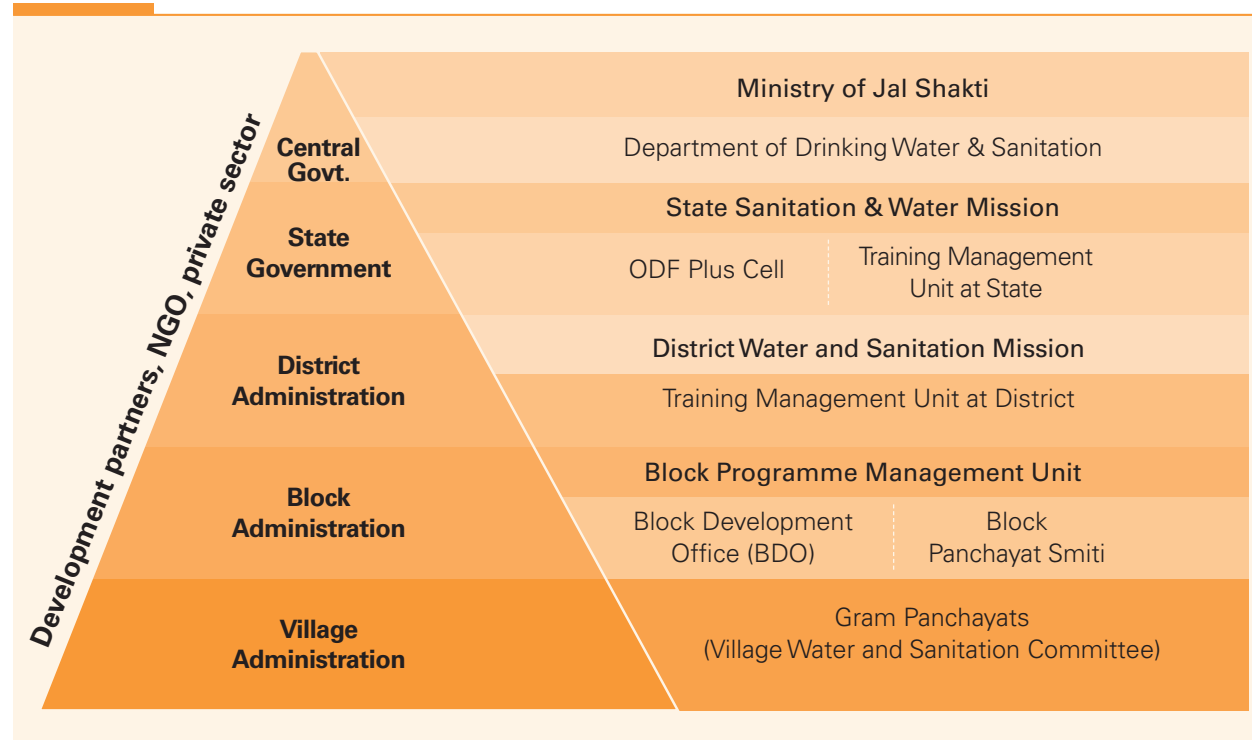
5.1 Institutional Structure

The Department of Drinking Water and Sanitation, Ministry of Jal Shakti, is the nodal Department for implementation of this strategy. The institutional structures at the State and district levels will continue as with the SBM-G. Panchayati Raj Institutions (including sub-committees of the Panchayat which focus on

water and sanitation) will be given the primary role for implementing the strategy at the local level. States will have the flexibility to adopt the appropriate institutional structures as per local context.

The institutional structure for the implementation of this strategy is given below:

Figure 5: Institutional Structure



5.2 Role of Panchayati Raj Institutions

Gram Panchayats (GPs) will be key in realising ODF Plus with support from Village Water and Sanitation Committees, and will be responsible for ensuring ODF sustainability, SLWM adoption and continuation of sanitation behaviour and monitoring for slippages.

GPs will undertake the following:

- a. Conduct rapid assessment of water and sanitation gaps
- b. Develop GP action plans with the involvement of the community to address the gaps
- c. Select appropriate sites for SLWM
- d. Ensure *Nigrani Samitis* and Village Water & Sanitation Committees are active and know their roles under the strategy
- e. Orient Swachhagrahis to know their role and responsibilities for water and sanitation
- f. Roll out IEC campaigns on water and sanitation
- g. Sensitize communities for contributing funds towards O&M of sanitation infrastructure
- h. Create management systems for O&M of services
- i. Establish a validation check to ensure all services are in place

5.3 Convergence and partnerships

Sustaining the gains from SBM-G and moving towards ODF Plus necessitates synergies across stakeholders. It requires high managerial and operational competence to ensure sustainability and utilization of investments in sanitation. Thus, synergy will be leveraged across the key players in the sanitation sphere

i.e. (i) Government bodies (ii) Development Partners (iii) Academic Institutions (iv) Private Sector/ Corporates (v) NGOs and other Civil Society Organisations

Government agencies:

- a. Ministry of Women and Child Development (MWCD) for promotion of safe sanitation through Anganwadis
- b. National Skill Development Corporation (NSDC) to bridge skilling gaps
- c. Ministry of Human Resource Development (MHRD) for introducing the concept of ODF Plus and including sanitation and hygiene in curriculum of schools and colleges
- d. Ministry of Health and Family Welfare (MoHFW) for improving sanitation facilities in hospitals and Primary Health Centres (PHCs)
- e. Ministry of Railways (MoR) for addressing sanitation in train coaches and railway stations
- f. Ministry of Housing and Urban Affairs (MoHUA) for convergence with STPs in urban areas
- g. Ministry of Rural Development (MoRD) for SLWM
- h. Ministry of Panchayati Raj (MoPR) for GPDP and Finance Commission grants
- i. Other Ministries, as necessary

Development Partners: for technical assistance and implementation support for water and sanitation programmes

Academic Institutions: to provide skilling on SLWM in rural areas, specialised engineering courses, BCC strategies. Research and Development (R&D) will be a crucial component.

Private Sector: The Swachh Bharat Kosh and the Jal Jeevan Kosh will continue to be able to receive funds; Public Private Partnership (PPP) models for SLWM infrastructure, linkage with urban services (for peri-urban and census towns); set up incubators and innovation laboratories; private sector may provide technical assistance in developing innovative and low-cost models of latrine and SLWM infrastructure.

Civil Society Organisations (CSOs): will be enabled to play a catalytic role in community mobilisation and community outreach for the water and sanitation programmes.

5.4 Sanitation Financing

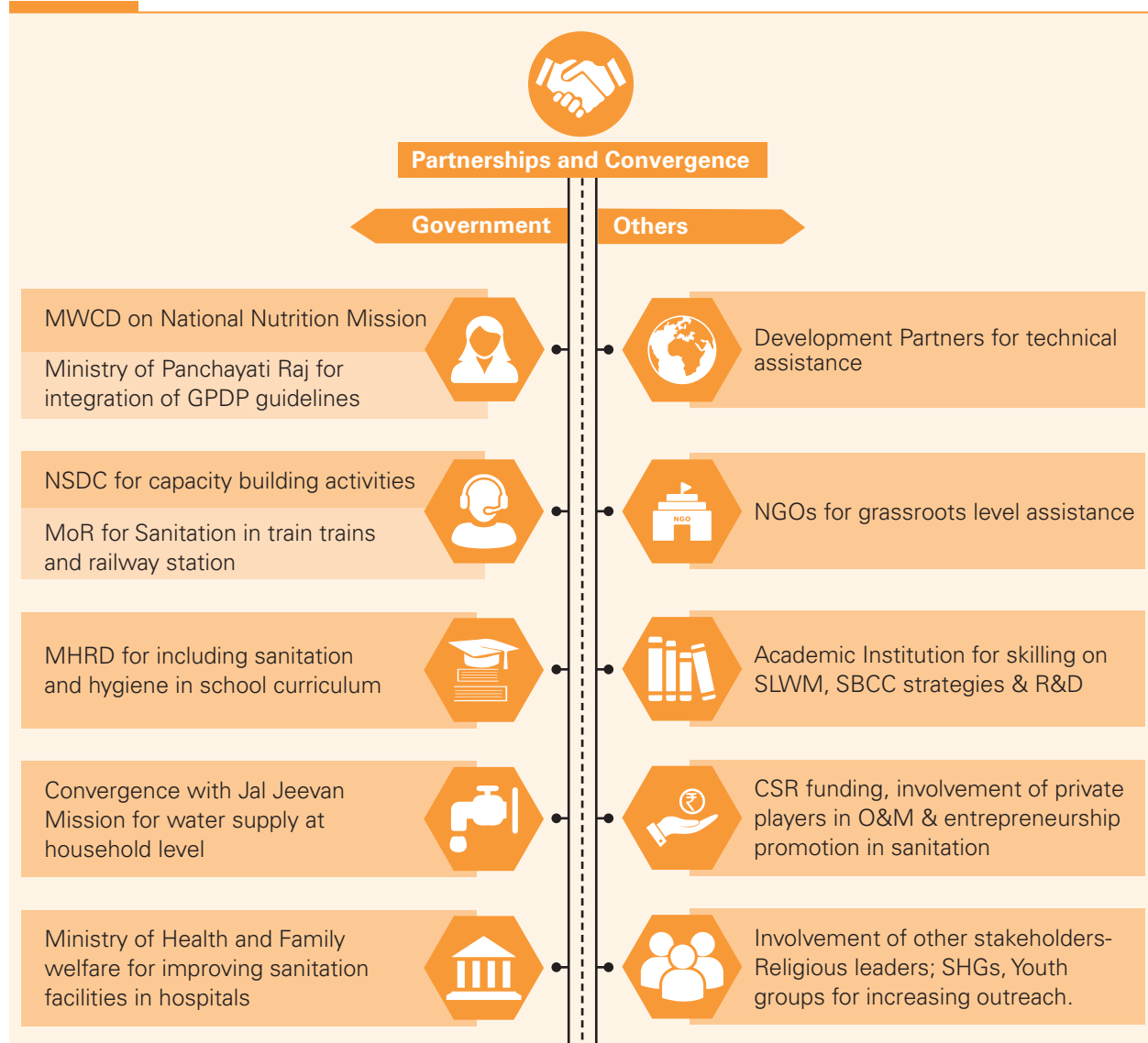
5.4.1 Public Financing

Government funding is the primary source of financing in the sanitation sector. However, encouraging alternate means of financing is an important focus area to ensure sustainable financing of sanitation in rural India. The following types of funding will be used for future sanitation efforts:

Central Government:

- a. Community level elements of ODF Plus will be provided funding support through the Swachh Bharat Mission- Grameen

Figure 6: Partnership and Convergence



- b. Convergence of resources between schemes cutting across rural development, employment and skilling, livelihoods etc at local government level

State government:

- a. State's contribution to the Swachh Bharat Mission- Grameen
- b. State specific schemes on sanitation
- c. Specific aspects of appropriate technology, environment protection, sanitation for those with special needs or for women through convergence with the relevant State Government schemes and departments

Panchayati Raj Institutions:

- a. Fourteenth Finance Commission (FFC) through grant allocation for GPs and Fifteenth Finance Commission funds post 2020
- b. Funds devolved to PRIs under various schemes by the state government and State Finance Commissions
- c. GPs may raise their own revenues for sanitation financing and maintenance of sanitation facilities, as per appropriate Acts

5.4.2 Alternative financing for sanitation

- ▶ Credit financing may be promoted by States including models like a) Credit Linkage to SHGs; b) Direct Lending to SHGs; c) Individual Lending; d) Bulk lending to business correspondents
- ▶ Increase microfinance facilities through knowledge exchange to develop capacity of MFIs in providing water and sanitation loans, policy-reform for enhancing non-income generation loans focused on livelihood improvement such as toilet construction and water connections, awareness regarding water and sanitation loans to create a demand
- ▶ Self-Financing towards gradual leveraging of community resources in the form of tariffs for SLWM, water supply, O&M

5.5 Monitoring and Evaluation

The online monitoring system set up for SBM-G contains a wealth of information on different indicators, disaggregated by state. Drawing on this information, an expanded MIS system will be developed to monitor implementation of various elements of the Sanitation Strategy.

An indicative results framework, outlining Goal, Outcomes, Intermediate Outcomes, Indicators and respective means of verifications is given in Table 4 . It may be modified and adapted by state/district administration as per local context.

5.5.1 Independent Verification

On the broad pattern of the National Annual Rural Sanitation Survey (NARSS), States may initiate State Annual Rural Sanitation Survey (SARSS), a sample survey using an independent verification agency to assess issues related to continued usage of toilets, sustainability of ODF villages and progress on SLWM. Provision for a nationwide study to determine and gather conclusive data on indicators like coverage of solid and liquid waste management, water supply for sanitation shall also be made.

5.5.2 Community led monitoring

Community led monitoring and methods of evaluation to be undertaken periodically to assess progress on sanitation. These may include Social Audits and other beneficiary assessment methods.

5.5.3 Fostering healthy competition to accelerate Implementation

Competitive monitoring such as District Rankings, Village Rankings, awards etc. may be undertaken to determine performance and act as tools to accelerate implementation.

Table 4: Results Framework

Goal	Outcome	Intermediate outcomes	Indicators	Means of Verification
Sustain the gains made under SBM-G	ODF-S	IHHL in every household	Percentage of households with access to toilets	Periodic surveys, MIS
			Percentage of villages that sustain ODF status	
		Inclusive access to sanitation	Number of toilets appropriate for persons with disabilities	Third party verification
		Functional and sanitary toilets	Number of toilets with twin pit toilet technology or any other toilet technology deemed safe as per local context	Periodic verification, random inspections by Swachhagrahis
		O&M and usage of toilets	Number of toilets retrofitted (as per requirement)	Ground level monitoring by Nigrani Samitis
			Percentage of people using toilets on a regular basis	Periodic Surveys
	Functional and standardized community and institutional toilets	Percentage of public institutions (schools, anganwadis, primary health centers etc.) with functional toilets	Third party verification	
	SLWM	Solid Waste Management for villages	Percentage of villages with compost pits/decentralized waste treatment facilities	Gram Panchayat records
			Percentage of villages with safe solid waste management	
			Percentage of blocks with Material Recovery Facilities (MRFs)	
Faecal sludge and liquid waste management		Percentage of public institutions with appropriate arrangement for FSM	Nodal department records	
Achieve clean living environment	Menstrual Waste Management	Percentage of public institutions (schools, anganwadis, health centres etc.) with adequate facilities for menstrual waste management	Periodic surveys	
	Persons practicing handwashing with soap	Percentage of public institutions with facilities for HWWS	Third party verification	



पेयजल एवं स्वच्छता विभाग
जल शक्ति मंत्रालय
भारत सरकार

DEPARTMENT OF DRINKING WATER AND SANITATION
MINISTRY OF JAL SHAKTI
GOVERNMENT OF INDIA

सत्यमेव जयते



एक कदम स्वच्छता की ओर

For more information, contact:

C Wing, 4th Floor, Pandit Deendayal Antyodaya Bhawan
CGO Complex, Lodhi Road, New Delhi, Delhi 110003

Ph: 011-2436 1011 | Fax: 011- 24361207